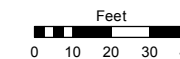
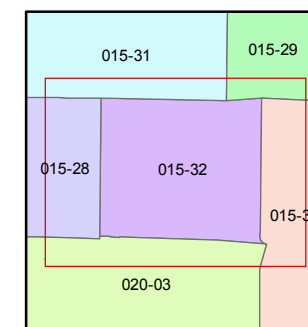
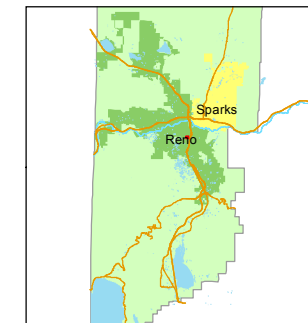


STATE OF NEVADA  
**WASHOE COUNTY**  
**ASSESSOR'S OFFICE**  
Michael E. Clark, Assessor

1001 East Ninth Street  
Building D  
Reno, Nevada 89512  
(775) 328-2231



1 inch = 50 feet



created by: TWT 03/11/2011

last updated: SR 12/20/16

area previously shown on map(s)

015-28

NOTE: This map was prepared for the use of the Washoe County Assessor for assessment and illustrative purposes only. It does not represent a survey of the premises. No liability is assumed as to the sufficiency or accuracy of the data delineated hereon.

STEEN DRIVE

**(#2039)**  
**FRANKTOWN CORNERS**  
A COMMERCIAL CONDOMINIUM

POR. NE 1/4 SEC. 24  
T19N - R19E

KIETZKE LANE

**015-320-00**  
2.23 ac.

COMMON AREA  
1.4354 ac.

RESTRICTED COMMON AREA  
0.798 ac.

EAST GROVE STREET

