

# (#301) SIERRA MEADOWS SUBDIVISION

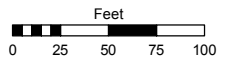
PORTION OF THE NE 1/4 OF SECTION 24  
T19N - R19E

Assessor's Map Number

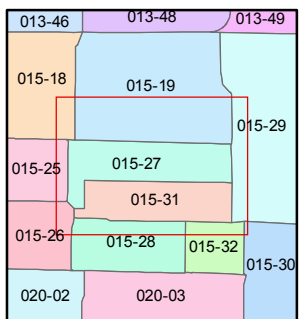
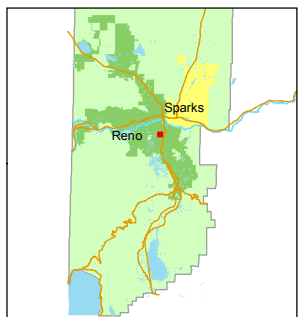
**015-27**

STATE OF NEVADA  
**WASHOE COUNTY**  
ASSESSOR'S OFFICE  
Joshua G. Wilson, Assessor

1001 East Ninth Street  
Building D  
Reno, Nevada 89512  
(775) 328-2231



1 inch = 100 feet

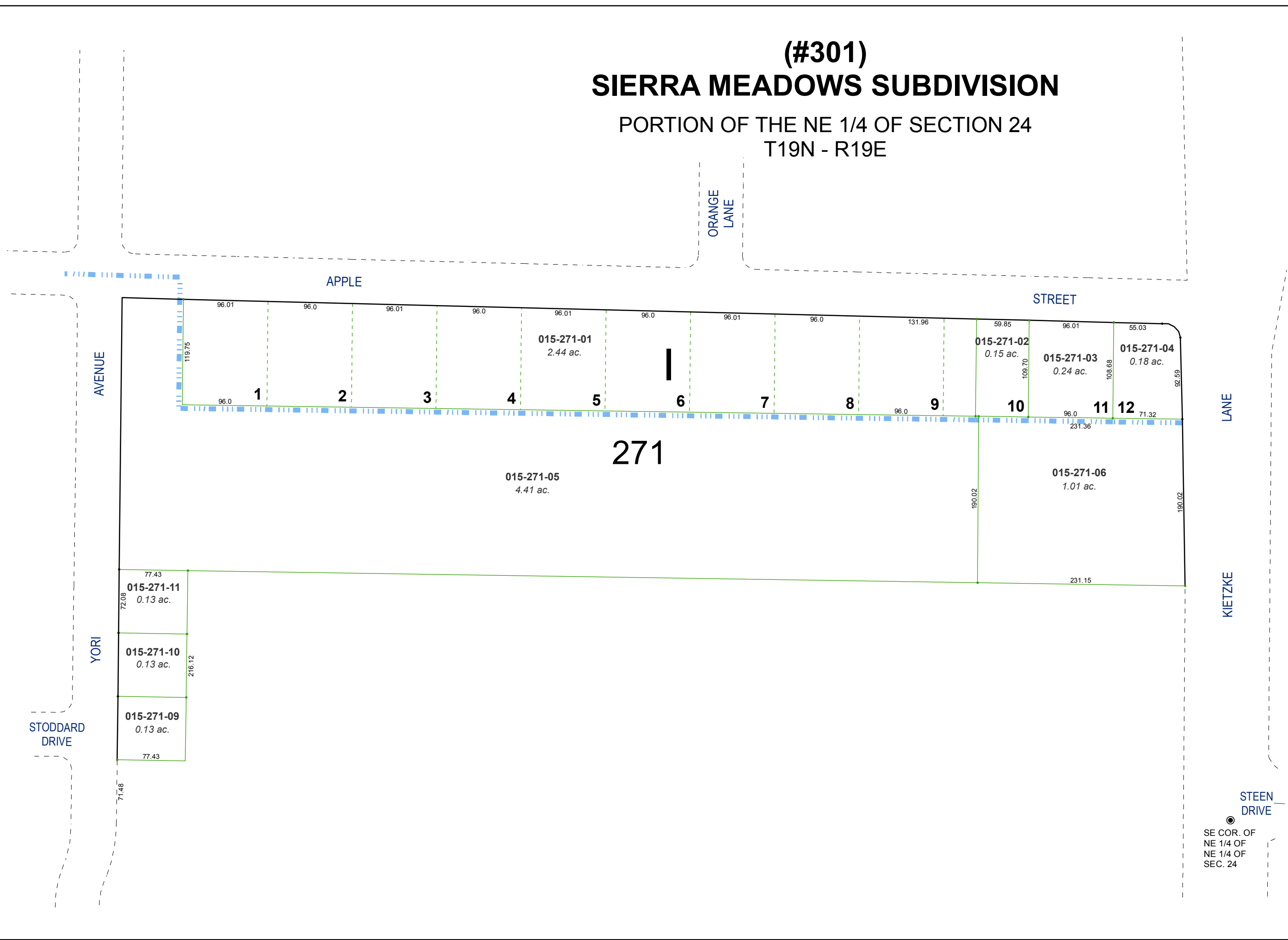


created by: TWT 3/6/2014

last updated: \_\_\_\_\_

area previously shown on map(s)

NOTE: This map was prepared for the use of the Washoe County Assessor for assessment and illustrative purposes only. It does not represent a survey of the premises. No liability is assumed as to the sufficiency or accuracy of the data delineated hereon.



SE COR. OF  
NE 1/4 OF  
NE 1/4 OF  
SEC. 24