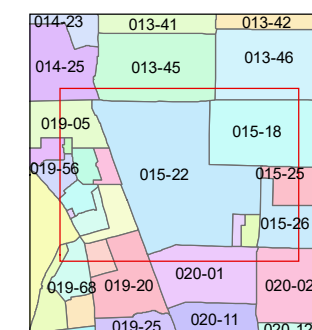
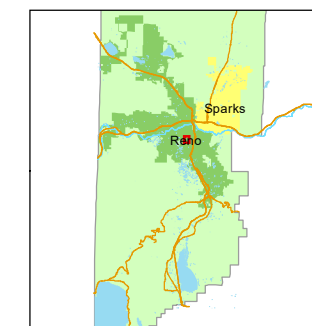


1 inch = 200 feet



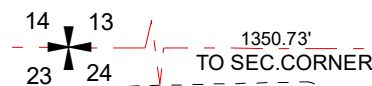
created by: CFB 06/03/2009

updated: JMO 11/17/17 JMO 01/17/20

SR 03/29/20 SR 06/15/22

area previously shown on map(s):

NOTE: This map was prepared for the use of the Washoe County Assessor for assessment and illustrative purposes only. It does not represent a survey of the premises. No liability is assumed as to the sufficiency or accuracy of the data delineated hereon.



EAST PLUMB LANE

13
24

PORTION OF HILLBRAE TRACT (UNOFFICIAL) RECORD OF SURVEY #29

PORTION OF N½ SECTION 24
T19N - R19E

APPLE STREET

WRONDEL WAY

GROVE STREET

CADILLAC PLACE

SOUTH VIRGINIA STREET

ELEMENT LANE

GREAT PARK AVE.

AMMIL ST.

OLIVINE WY.

KIRMAN AVE.

G

F

015-220-38
15993 sf

015-220-43
14346 sf

015-220-37
18172 sf

019-16

015-220-64
4.025 ac.

015-220-76
66744 sf

015-220-75
76173 sf

015-220-79
4.531 ac.

015-220-52
47381 sf

015-220-73
4.041 ac.

POR.PAR.C
RS 5497
PAR.A-12
RS 5880

POR. PAR. 1
PM 5140
PAR. A-1
RS 5880

POR. PAR. 4
PM 5140

PAR. A-3
RS 5880

POR.PAR. A-7 & A-9
RS 5880
PAR.A-7A
RS 6136

PAR. A-11 &
POR.PAR. A-10
RS 5880
PAR. A-11A
RS 6136

POR.PAR. A-8
RS 5880
PAR.A-8A
RS 6136

PAR. A-9A
RS 6136

POR.PAR. A-9
RS 5880
PAR.A-10A
RS 6136

015-220-78
6.128 ac.

PAR. A-11 &
POR.PAR. A-10
RS 5880
PAR. A-11A
RS 6136

015-220-79
4.531 ac.

015-220-73
4.041 ac.

POR. PAR. 2
PM 5140

PAR. A-2
RS 5880

PAR. 3
PM 5140

015-220-63
4.133 ac.

PAR. A-4
RS 5880

015-220-65
3.524 ac.

PAR. A-5
RS 5880

PAR. 8B
RS 3415

015-220-45
73623 sf

015-220-67
14987 sf

015-220-66
6.045 ac.

015-33

015-34

PAR. A-13
RS 5880

015-220-74
2.945 ac.

015-220-79
4.531 ac.

015-220-73
4.041 ac.

015-220-73
4.041 ac.

015-220-73
4.041 ac.