

# (#301) SIERRA MEADOWS SUBDIVISION

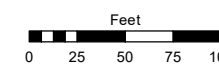
PORTION OF NE¼ SECTION 24  
T19N - R19E

Assessor's Map Number

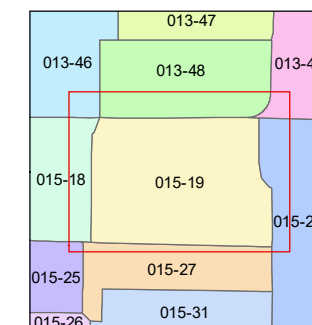
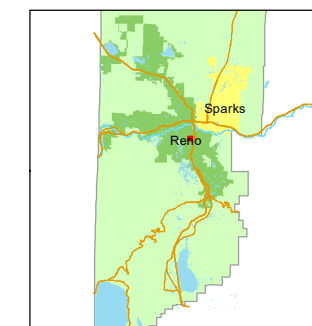
## 015-19

STATE OF NEVADA  
**WASHOE COUNTY**  
ASSESSOR'S OFFICE

1001 East Ninth Street, Building D  
Reno, Nevada 89512  
(775) 328-2231



1 inch = 100 feet

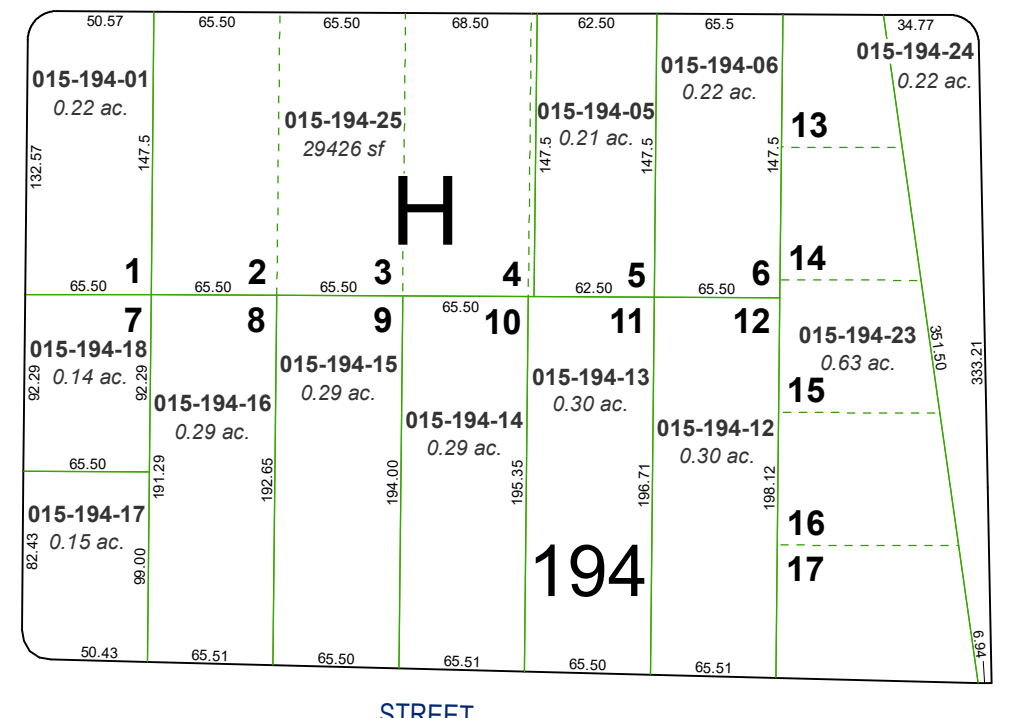
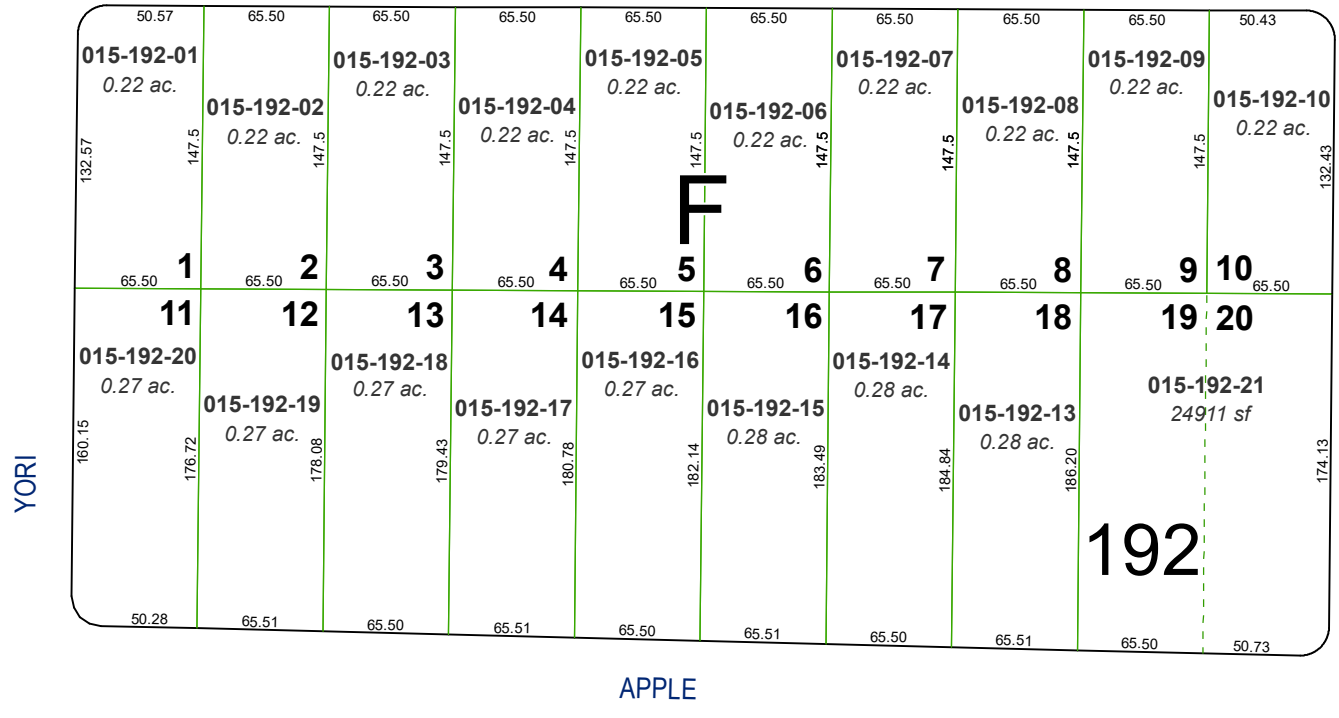
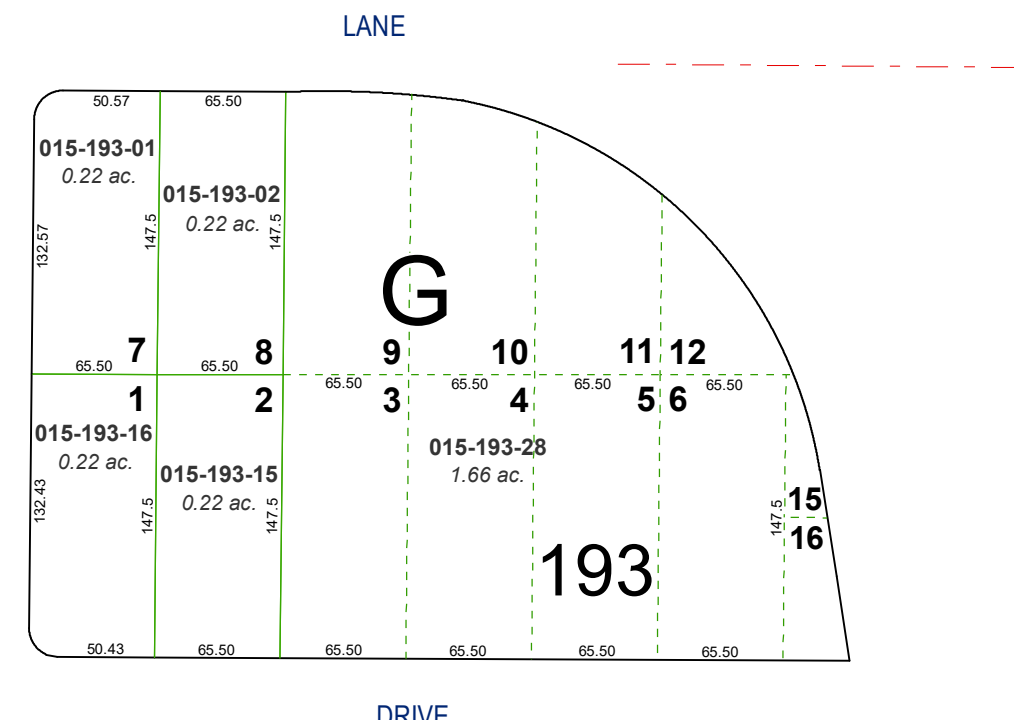
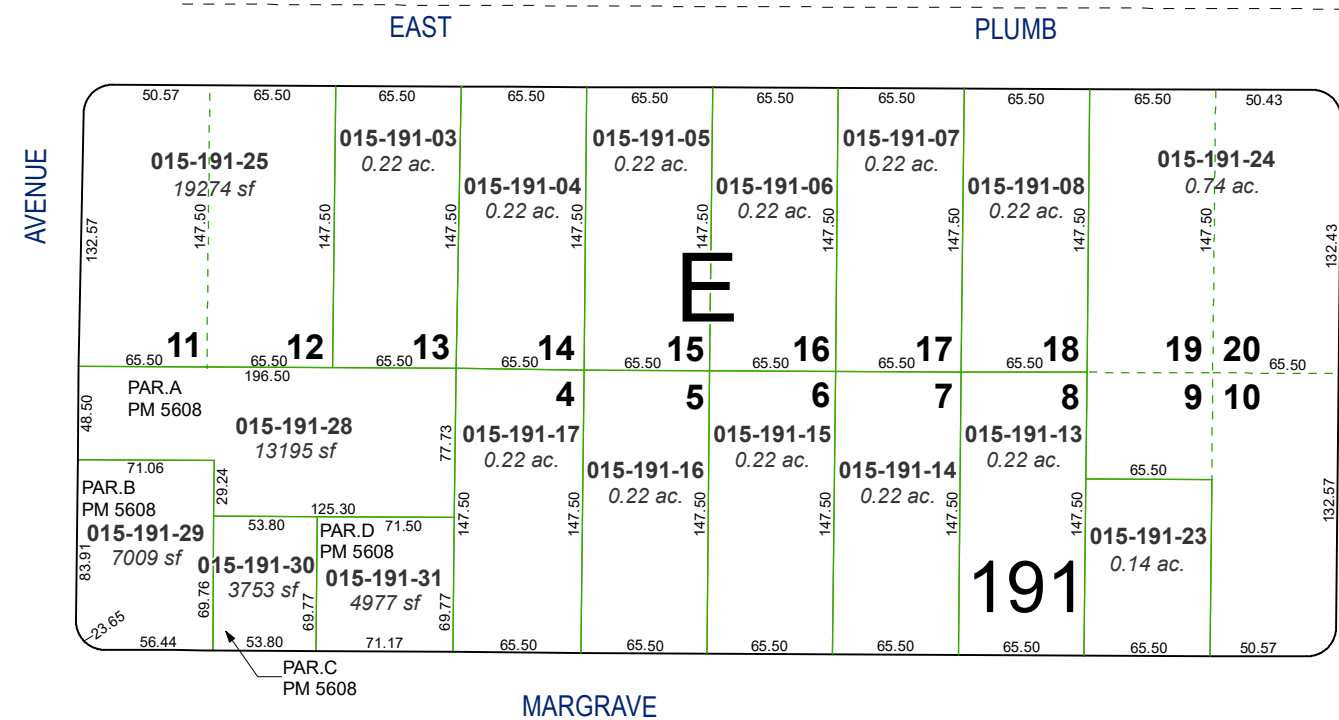


created by: TWT 03/05/2014

updated: SR 06/21/22

area previously shown on map(s):

NOTE: This map was prepared for the use of the Washoe County Assessor for assessment and illustrative purposes only. It does not represent a survey of the premises. No liability is assumed as to the sufficiency or accuracy of the data delineated hereon.



13 18  
24 19

T19N - R19E  
T19N - R20E

KIETZKE