

Assessor's Map Number

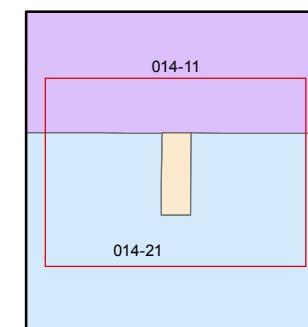
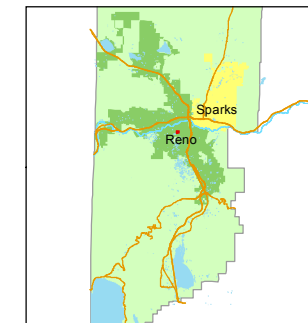
014-33

STATE OF NEVADA
WASHOE COUNTY
ASSESSOR'S OFFICE
Michael E. Clark, Assessor

1001 East Ninth Street
Building D
Reno, Nevada 89512
(775) 328-2231



1 inch = 30 feet



created by: EMG 9/17/2015

last updated: JMO 9/6/16

area previously shown on map(s)

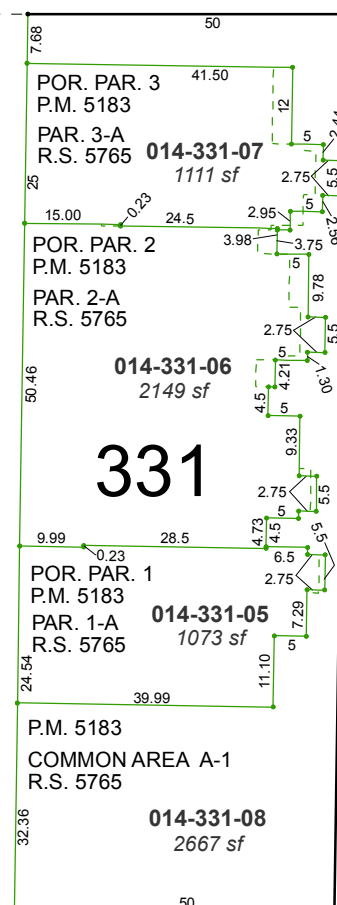
014-21

NOTE: This map was prepared for the use of the Washoe County Assessor for assessment and illustrative purposes only. It does not represent a survey of the premises. No liability is assumed as to the sufficiency or accuracy of the data delineated hereon.

LOT 12, BLOCK 22, SIERRA VISTA TRACT (#113)
PORTION OF THE SE ¼ OF SEC. 14
T19N - R19E

PUEBLO STREET

FOREST STREET



NOTE: This map was prepared for the use of the Washoe County Assessor for assessment and illustrative purposes only. It does not represent a survey of the premises. No liability is assumed as to the sufficiency or accuracy of the data delineated hereon.