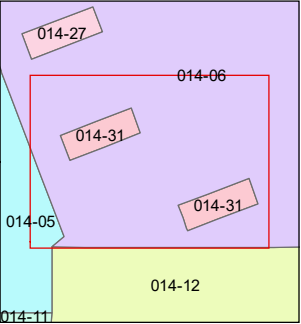
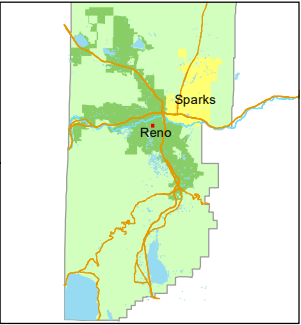


STATE OF NEVADA
WASHOE COUNTY
ASSESSOR'S OFFICE

1001 East Ninth Street, Building D
Reno, Nevada 89512
(775) 328-2231



1 inch = 30 feet



created by: CFB 07/05/2013

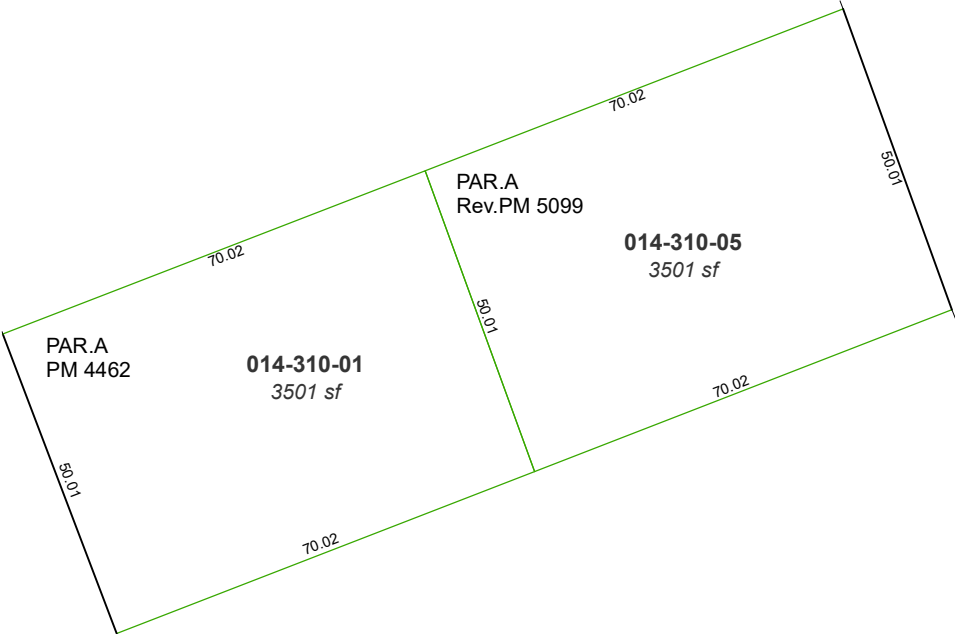
updated: SR 05/08/20

area previously shown on map(s):

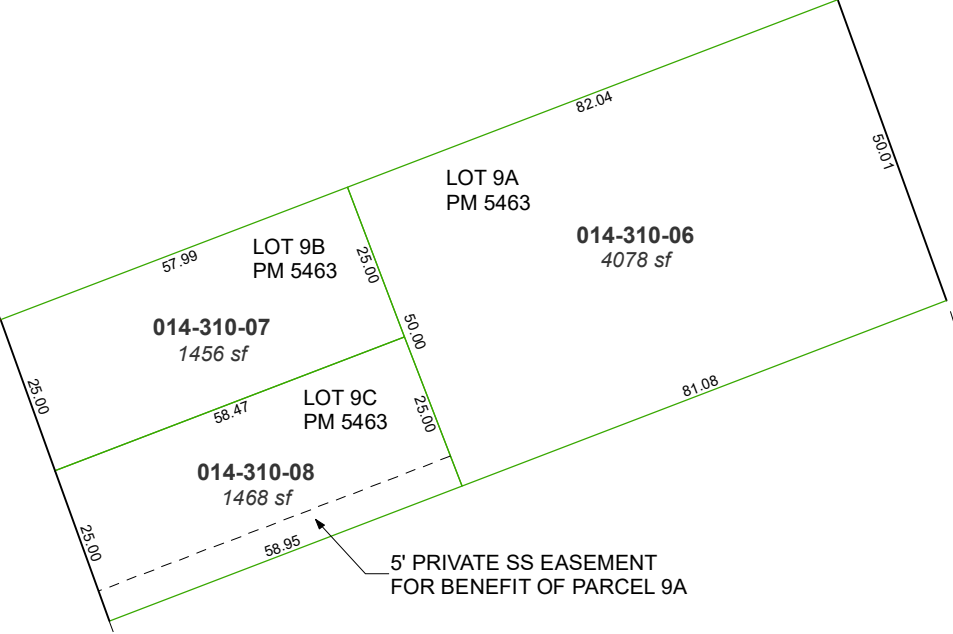
014-06

NOTE: This map was prepared for the use of the Washoe County Assessor for assessment and illustrative purposes only. It does not represent a survey of the premises. No liability is assumed as to the sufficiency or accuracy of the data delineated hereon.

LOT 15, BLOCK 2, LITCH ADDITION (#61)



LOT 9, BLOCK 2, LITCH ADDITION (#61)
PORTION OF THE NORTHEAST ¼
OF SECTION 14, T19N - R19E



15
22

14
23

N61°33'28"E
5735.17'

5' PRIVATE SS EASEMENT
FOR BENEFIT OF PARCEL 9A

ALLEY

WATT
STREET

HASKELL
STREET

ALLEY