

UNIT	INTEREST IN COMMON AREA
1	903/3211
2	868/3211
3	1440/3211
A	903/3211
B	868/3211
C	1440/3211

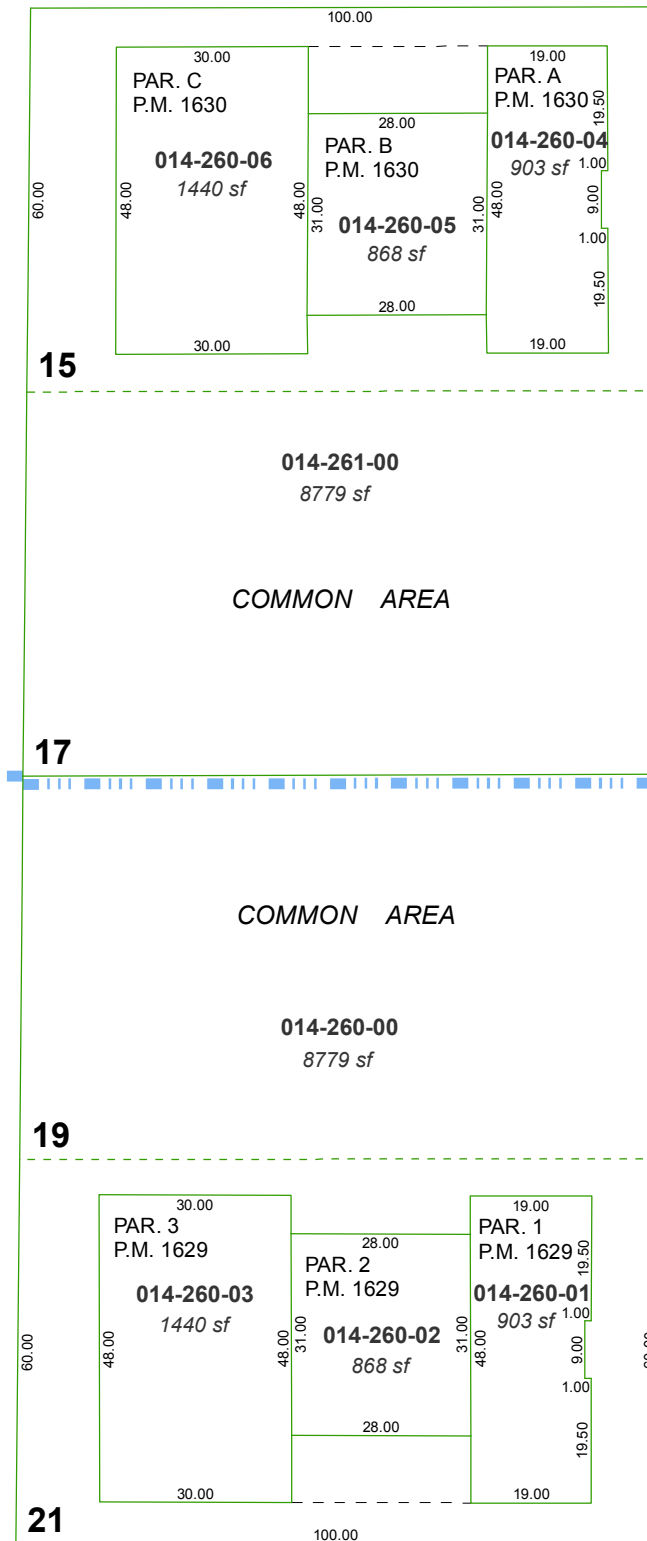
PORTION OF THE SW 1/4 OF SECTION 13
T19N - R19E

**AMENDED
CONDOMINIUM PARCEL MAP #1630**

LOTS 15 & 17, BLOCK B
SOUTHLAND HEIGHTS SUBDIVISION (#264)
(AMENDS P.M. 1618)

**AMENDED
CONDOMINIUM PARCEL MAP #1629**

LOTS 19 & 21, BLOCK B
SOUTHLAND HEIGHTS SUBDIVISION (#264)
(AMENDS P.M. 1617)



DRIVE

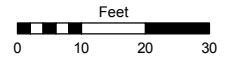
LAKESIDE

Assessor's Map Number

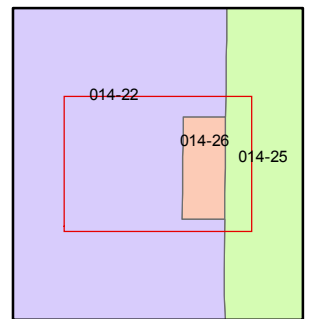
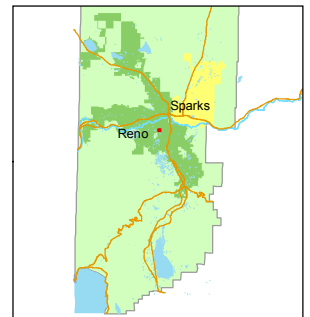
014-26

STATE OF NEVADA
WASHOE COUNTY
ASSESSOR'S OFFICE
Joshua G. Wilson, Assessor

1001 East Ninth Street
Building D
Reno, Nevada 89512
(775) 328-2231



1 inch = 30 feet



created by: TWT 2/26/2014

last updated: _____

area previously shown on map(s)

014-22

NOTE: This map was prepared for the use of the Washoe County Assessor for assessment and illustrative purposes only. It does not represent a survey of the premises. No liability is assumed as to the sufficiency or accuracy of the data delineated hereon.