

PORTION OF THE SE 1/4 OF SECTION 14
T19N - R19E

**(#456)
SHANGRI-LA SUBDIVISION**

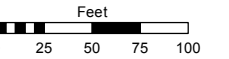
**(#114) O'BRIEN'S
SOUTHBRAE ADDITION**

Assessor's Map Number

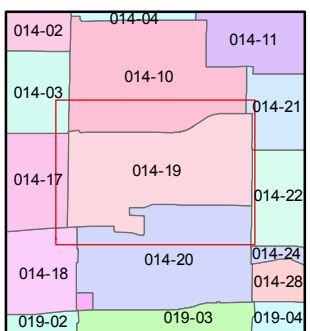
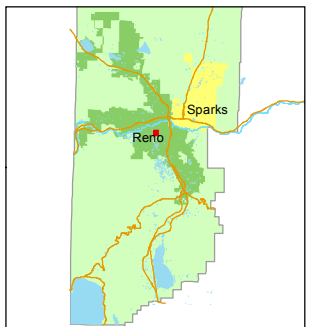
014-19

STATE OF NEVADA
**WASHOE COUNTY
ASSESSOR'S OFFICE**
Michael E. Clark, Assessor

1001 East Ninth Street
Building D
Reno, Nevada 89512
(775) 328-2231



1 inch = 100 feet

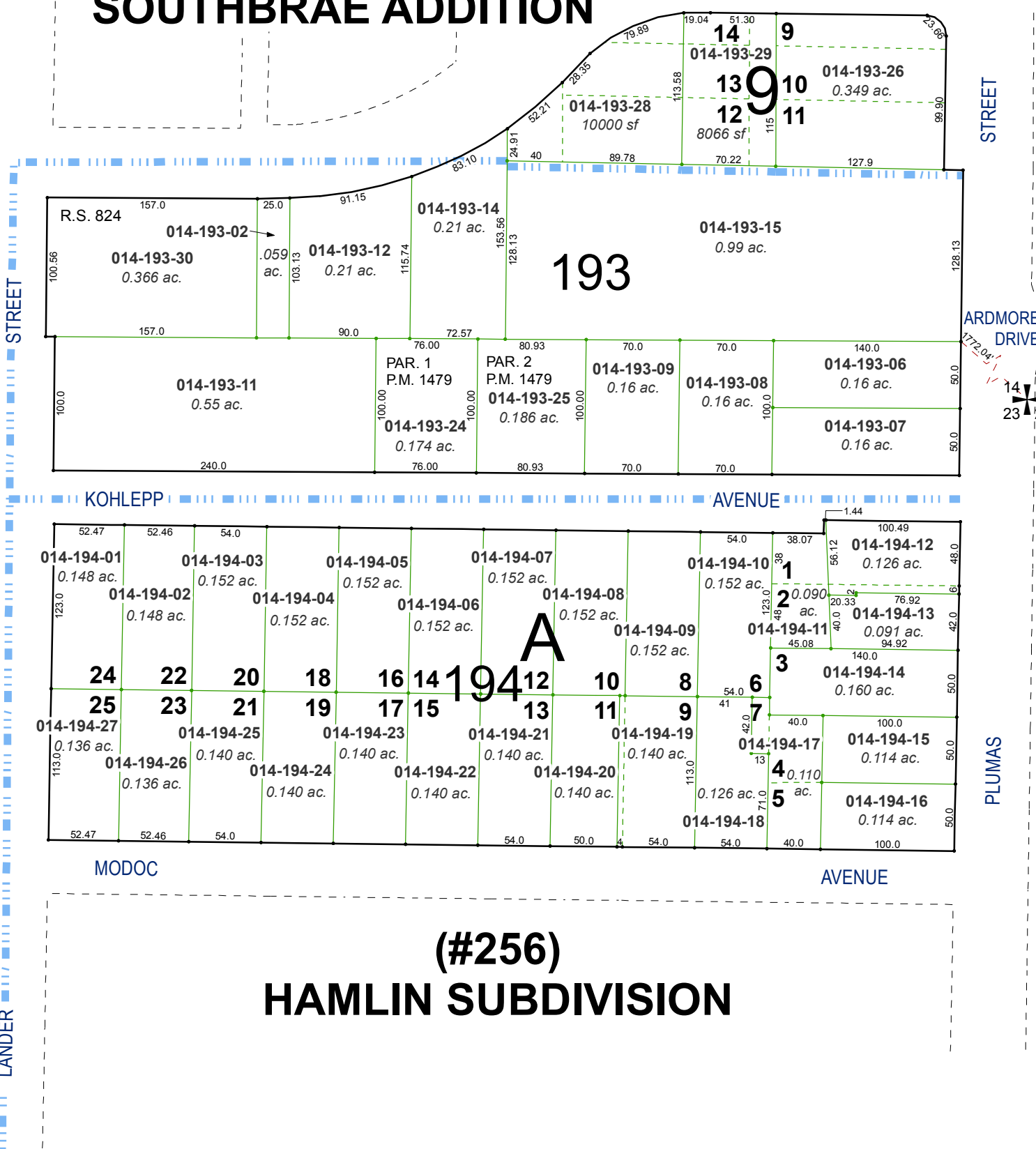
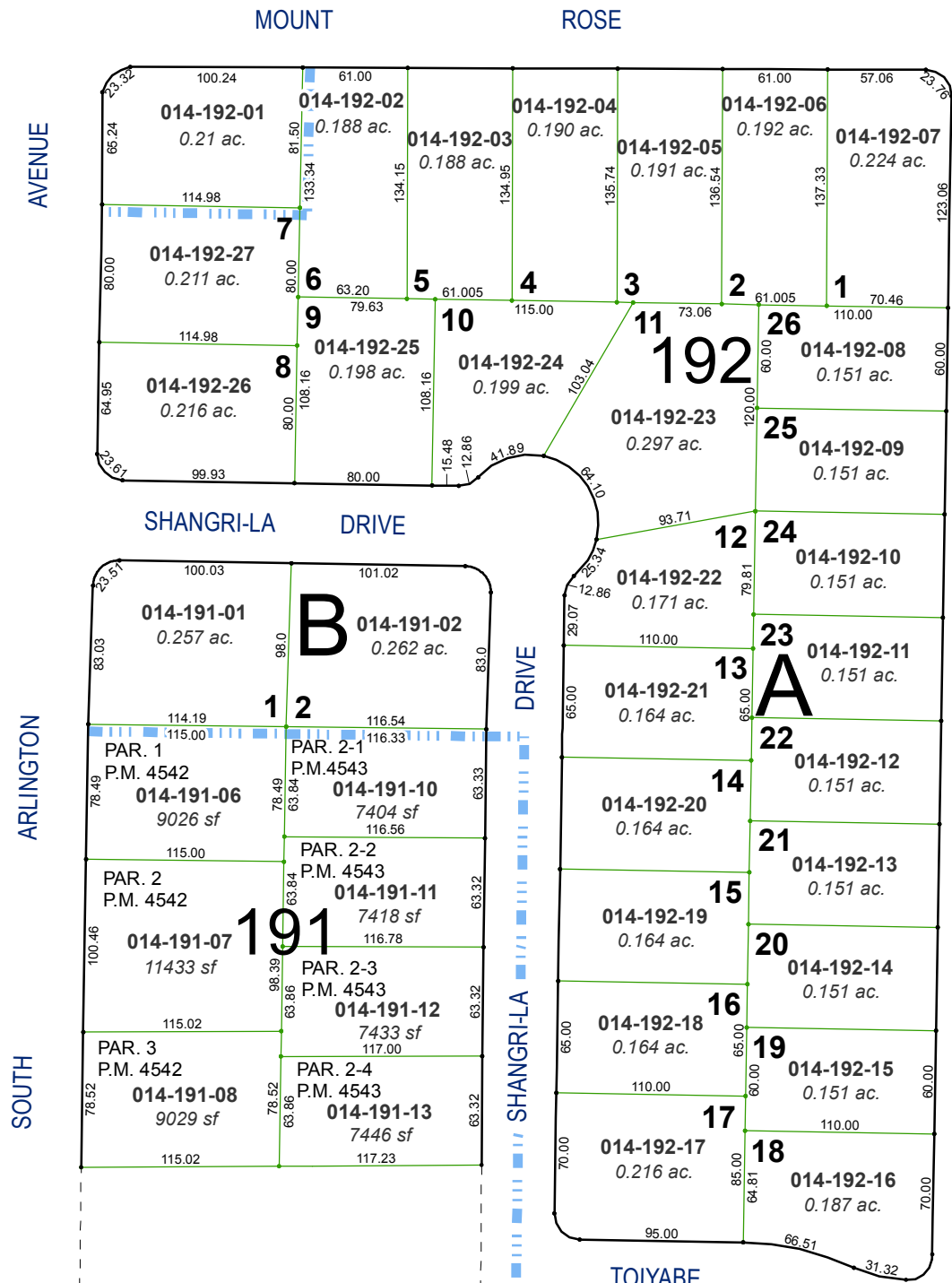


created by: TWT 2/18/2014

last updated: EMG 10/6/2014 CFB 8/27/2015

area previously shown on map(s)

NOTE: This map was prepared for the use of the Washoe County Assessor for assessment and illustrative purposes only. It does not represent a survey of the premises. No liability is assumed as to the sufficiency or accuracy of the data delineated hereon.



**(#256)
HAMLIN SUBDIVISION**

