

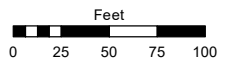
(#326)
SOUTHRIDGE ESTATES
 PORTION OF THE SW 1/4 OF SECTION 14
 T19N - R19E

Assessor's Map Number

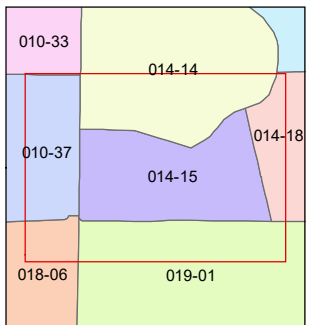
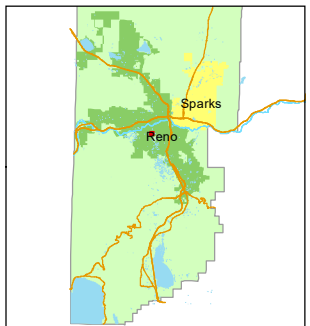
014-15

STATE OF NEVADA
WASHOE COUNTY
ASSESSOR'S OFFICE

1001 East Ninth Street, Building D
 Reno, Nevada 89512
 (775) 328-2231



1 inch = 100 feet

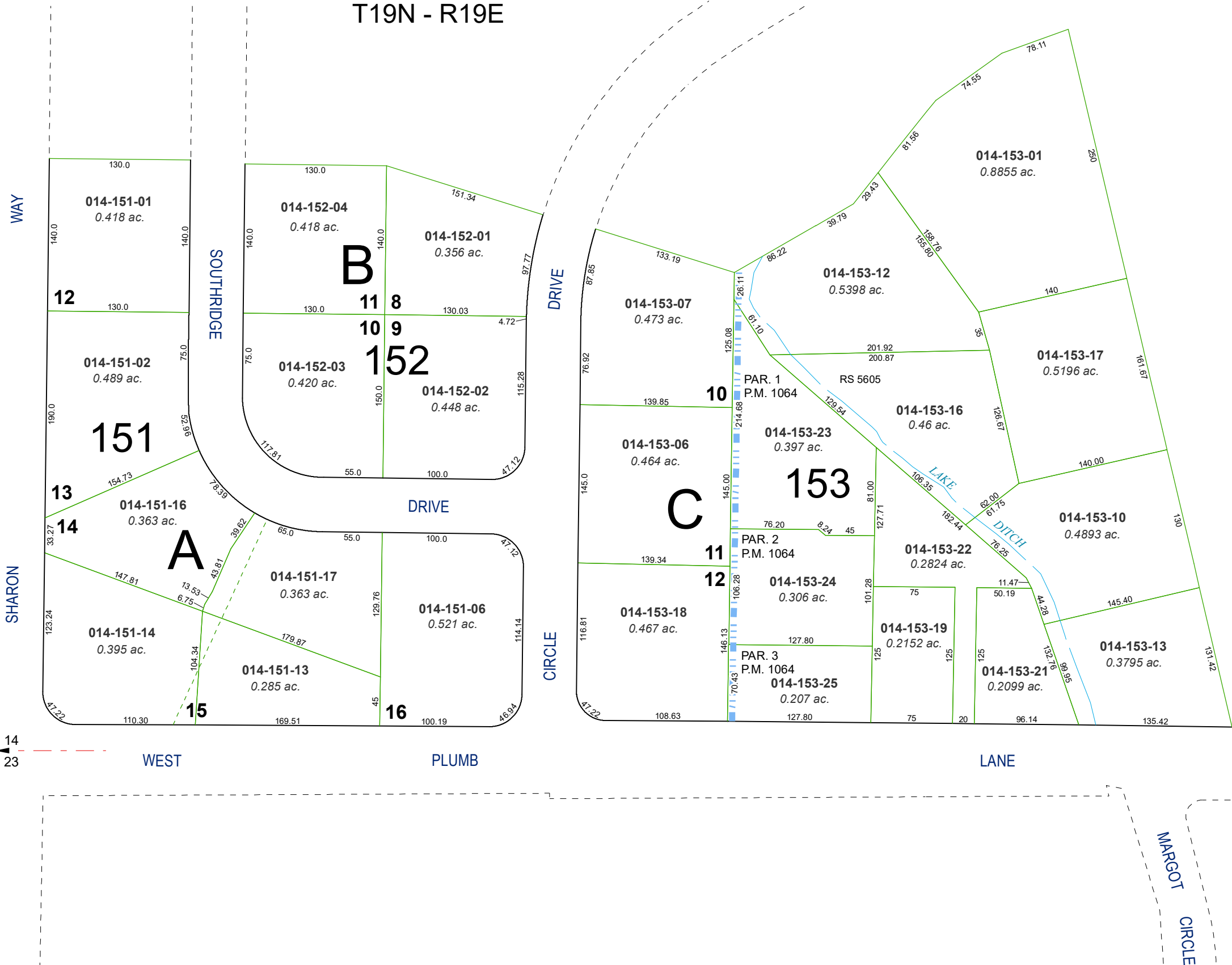


created by: TWT 11/25/2013

updated: SR 10/19/21

area previously shown on map(s):

NOTE: This map was prepared for the use of the Washoe County Assessor for assessment and illustrative purposes only. It does not represent a survey of the premises. No liability is assumed as to the sufficiency or accuracy of the data delineated hereon.



15 14
 22 23

WEST

PLUMB

LANE

MARGOT
 CIRCLE