

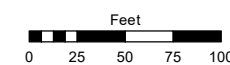
**(#326)**  
**SOUTHRIDGE ESTATES**  
 PORTION OF THE SW¼ SECTION 14  
 T19N - R19E

Assessor's Map Number

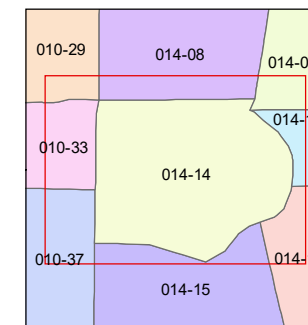
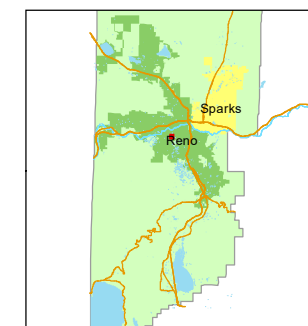
**014-14**

STATE OF NEVADA  
**WASHOE COUNTY**  
**ASSESSOR'S OFFICE**

1001 East Ninth Street, Building D  
 Reno, Nevada 89512  
 (775) 328-2231



1 inch = 100 feet



created by: TWT 11/25/2013

updated: SR 10/14/21

area previously shown on map(s):

NOTE: This map was prepared for the use of the Washoe County Assessor for assessment and illustrative purposes only. It does not represent a survey of the premises. No liability is assumed as to the sufficiency or accuracy of the data delineated hereon.

