

(#113)

SIERRA VISTA TRACT

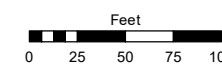
PORTIONS OF SW¼ SECTION 13 & SE¼ SECTION 14 T19N - R19E

Assessor's Map Number

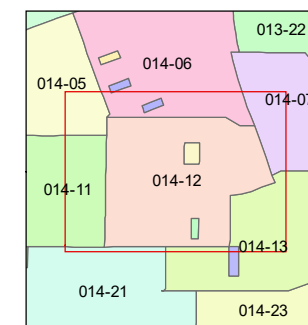
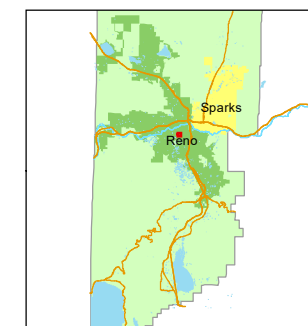
014-12

STATE OF NEVADA
WASHOE COUNTY
ASSESSOR'S OFFICE

1001 East Ninth Street, Building D
Reno, Nevada 89512
(775) 328-2231



1 inch = 100 feet



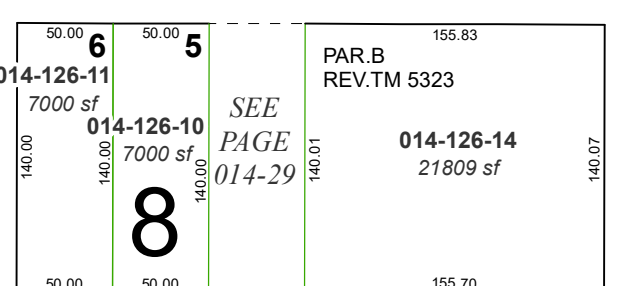
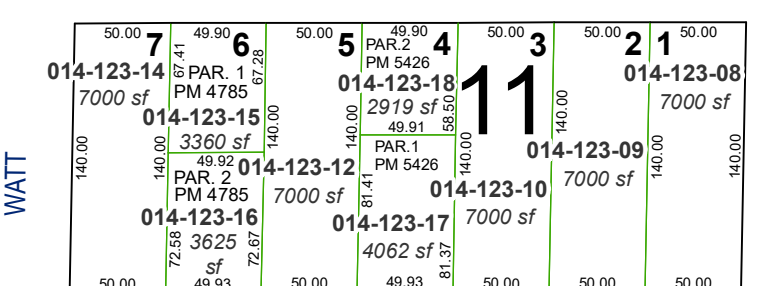
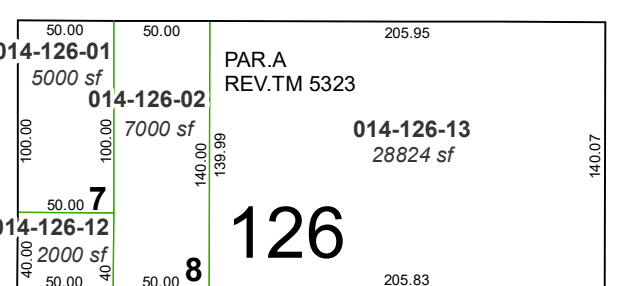
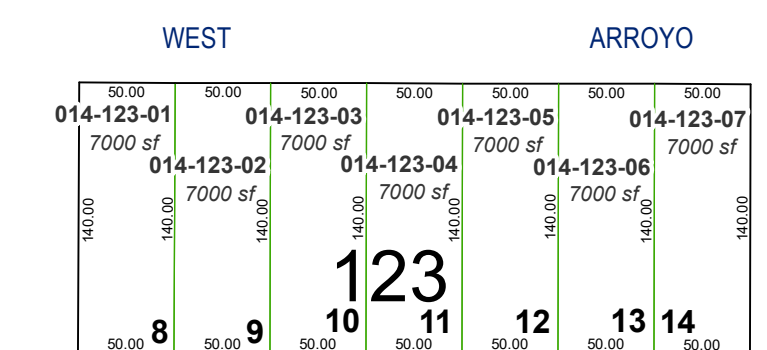
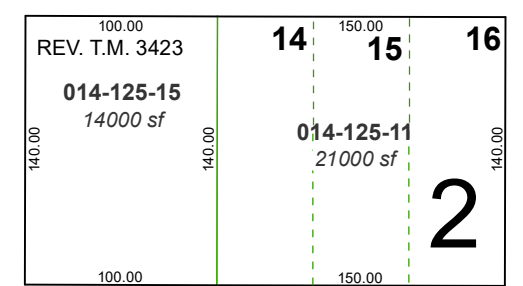
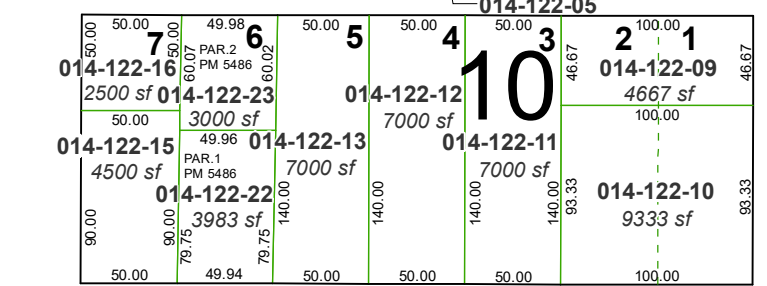
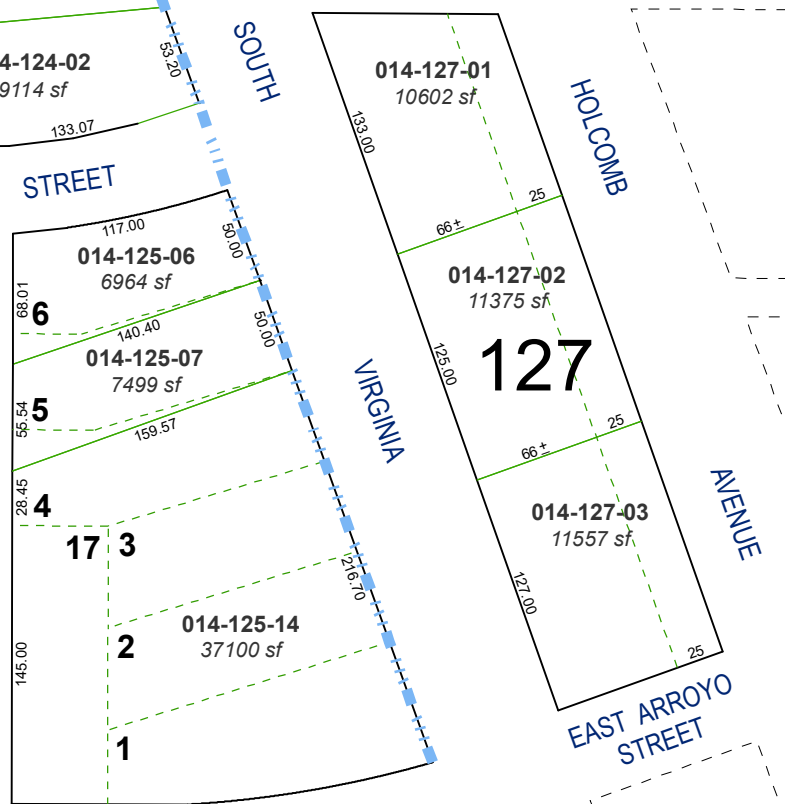
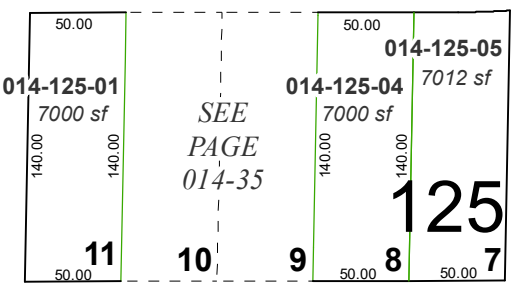
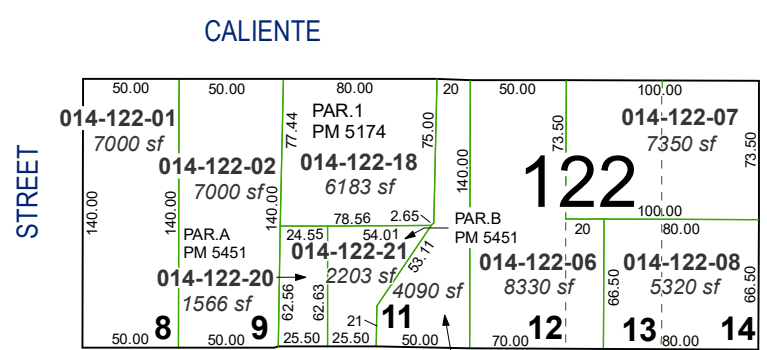
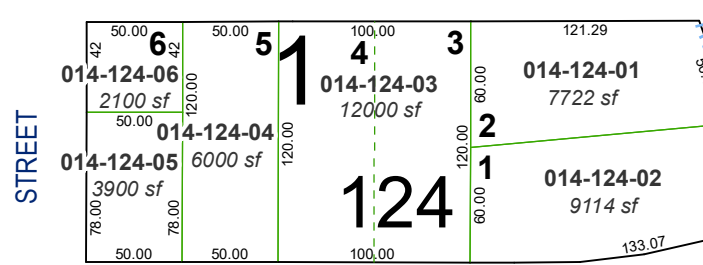
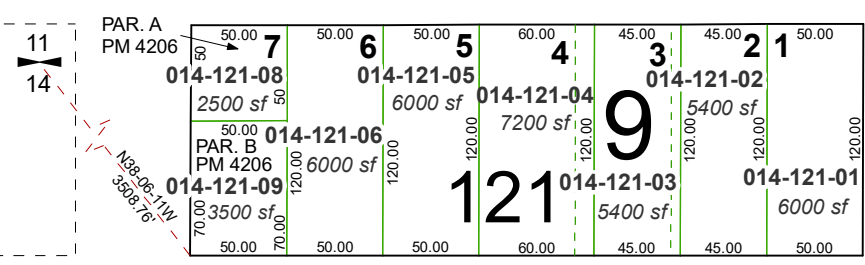
created by: TWT 11/22/2013

updated: SR 05/15/19 SR 10/08/19

SR 02/24/20 SR 10/20/20

area previously shown on map(s):

NOTE: This map was prepared for the use of the Washoe County Assessor for assessment and illustrative purposes only. It does not represent a survey of the premises. No liability is assumed as to the sufficiency or accuracy of the data delineated hereon.



WEST ARROYO WEST PUEBLO

HASKELL TONOPAH STREET

11
14

STREET

WATT

STREET

HASKELL

VASSAR

SOUTH

STREET

STREET

STREET

STREET

STREET

AVENUE

STREET