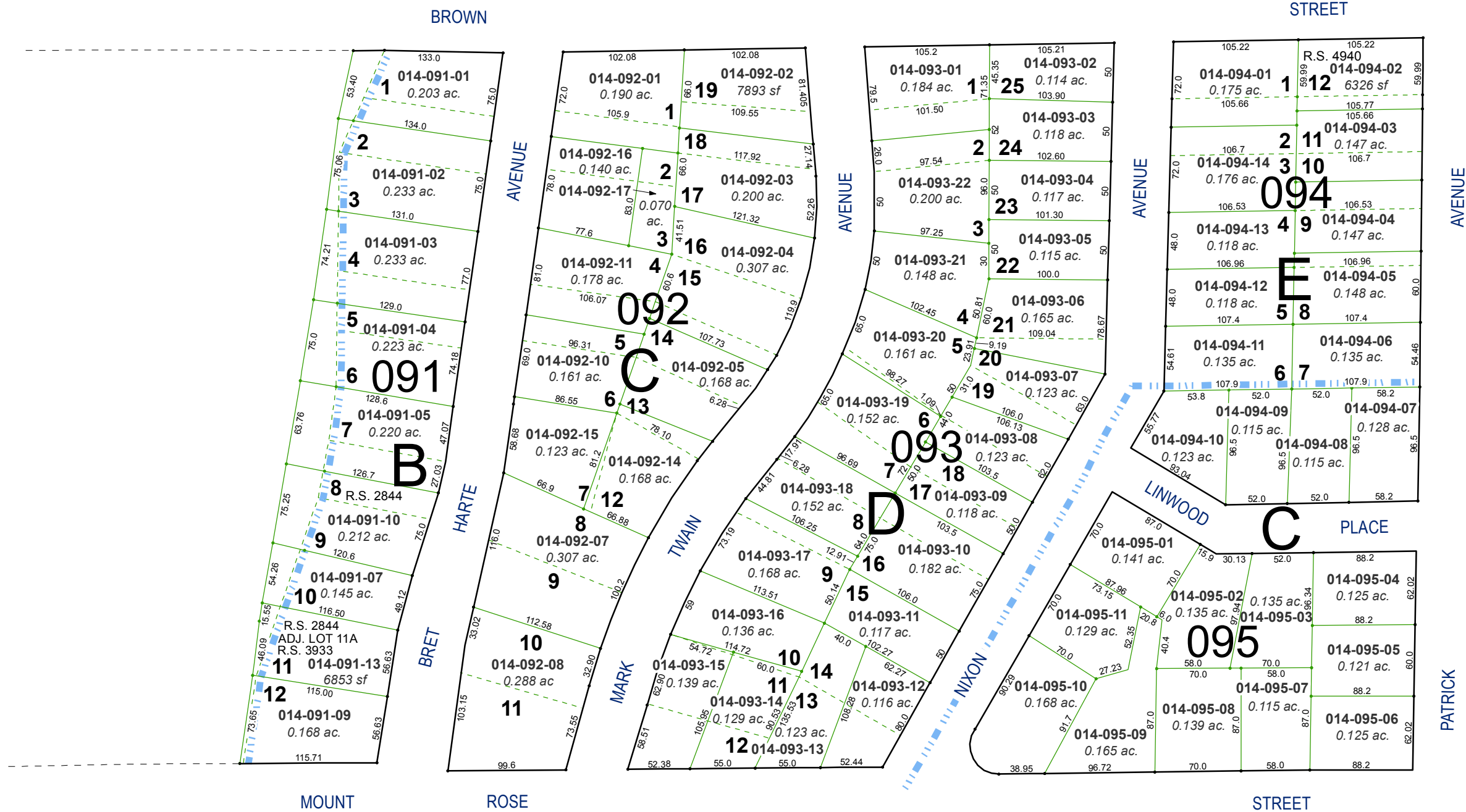


(#259) MANOR GARDENS

PORTION OF THE SW 1/4 OF SECTION 14
T19N - R19E

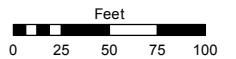


(#182) ARLINGTON HEIGHTS SUBURBAN HOME TRACT A PORTION OF BLOCK C

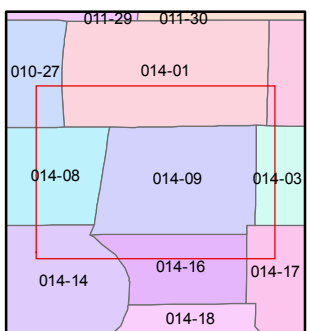
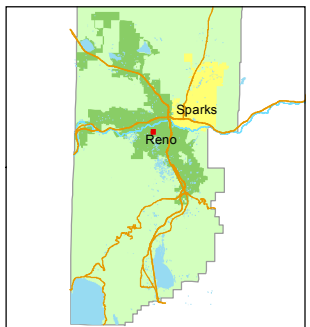
Assessor's Map Number
014-09

STATE OF NEVADA
WASHOE COUNTY
ASSESSOR'S OFFICE
Michael E. Clark, Assessor

1001 East Ninth Street
Building D
Reno, Nevada 89512
(775) 328-2231



1 inch = 100 feet



created by: TWT 11/05/2013

last updated: KSB 5/11/16 JKF 10/13/17

area previously shown on map(s)

NOTE: This map was prepared for the use of the Washoe County Assessor for assessment and illustrative purposes only. It does not represent a survey of the premises. No liability is assumed as to the sufficiency or accuracy of the data delineated hereon.