

# (#65) McCORMICK ADDITION

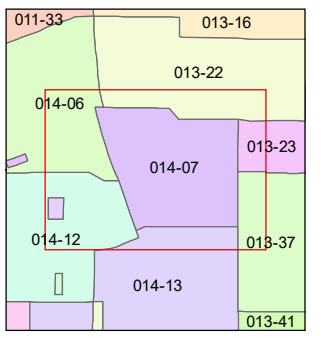
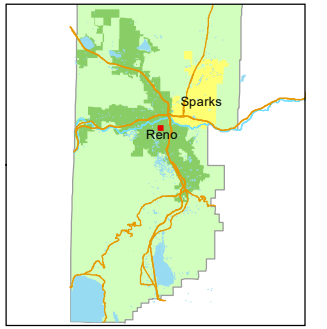
# (#123) TERRACE TRACT POR. WEST 1/2 SEC. 13 T19N - R19E

Assessor's Map Number  
**014-07**

STATE OF NEVADA  
**WASHOE COUNTY**  
ASSESSOR'S OFFICE  
1001 East Ninth Street, Building D  
Reno, Nevada 89512  
(775) 328-2231



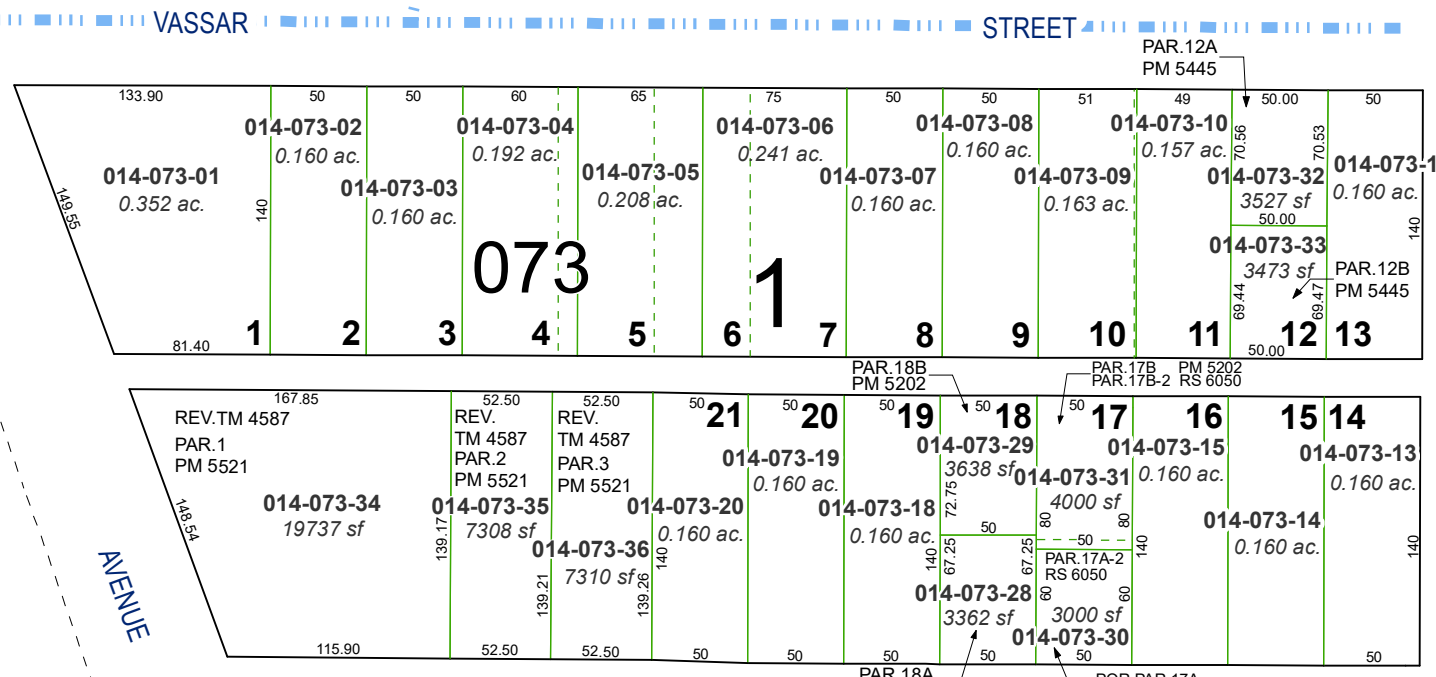
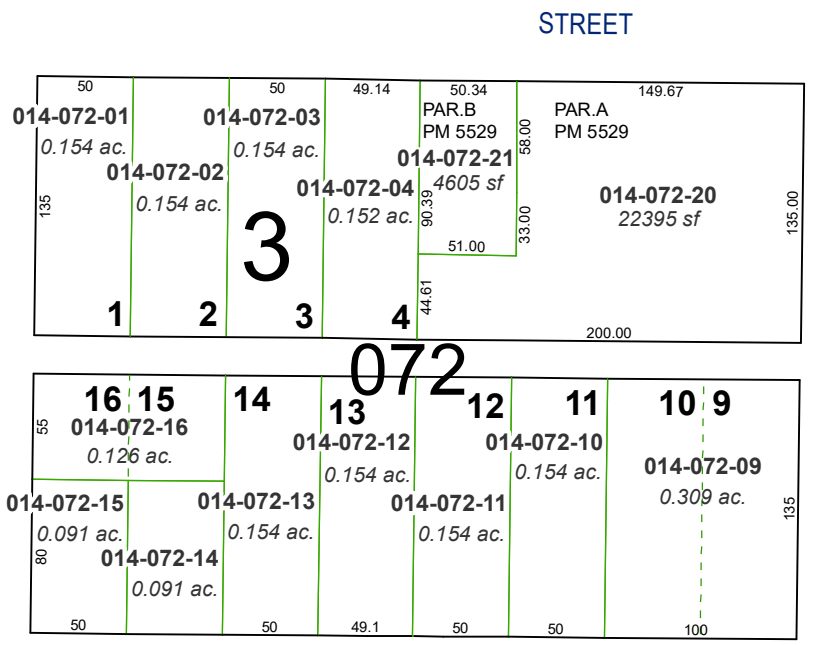
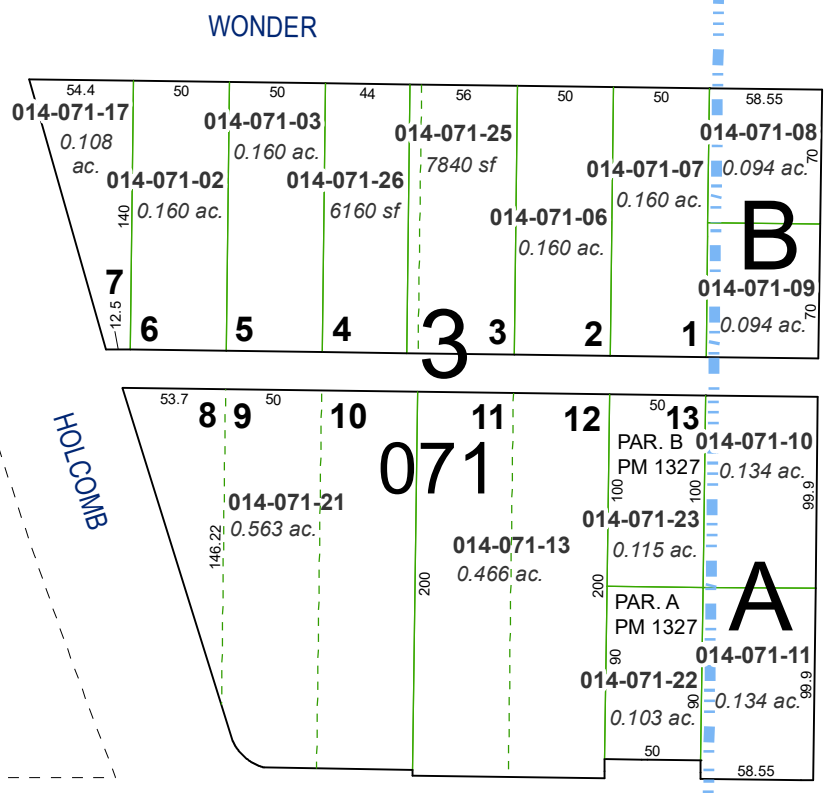
Feet  
0 25 50 75 100  
1 inch = 100 feet



created by: TWT 10/15/2013  
updated: SR 06/17/19 SR 01/14/20  
SR 05/13/21 SR 06/11/21

area previously shown on map(s):

NOTE: This map was prepared for the use of the Washoe County Assessor for assessment and illustrative purposes only. It does not represent a survey of the premises. No liability is assumed as to the sufficiency or accuracy of the data delineated hereon.



# (#130) AMENDED VICTORIA PARK TRACT

WONDER  
HOLCOMB  
SOUTH  
CALIENTE STREET  
VIRGINIA  
W. ARROYO STREET  
EAST

AVENUE

STREET

AVENUE

VASSAR

STREET

WELLS

AVENUE

ARROYO

STREET

SOUTH

BROADWAY BLVD.