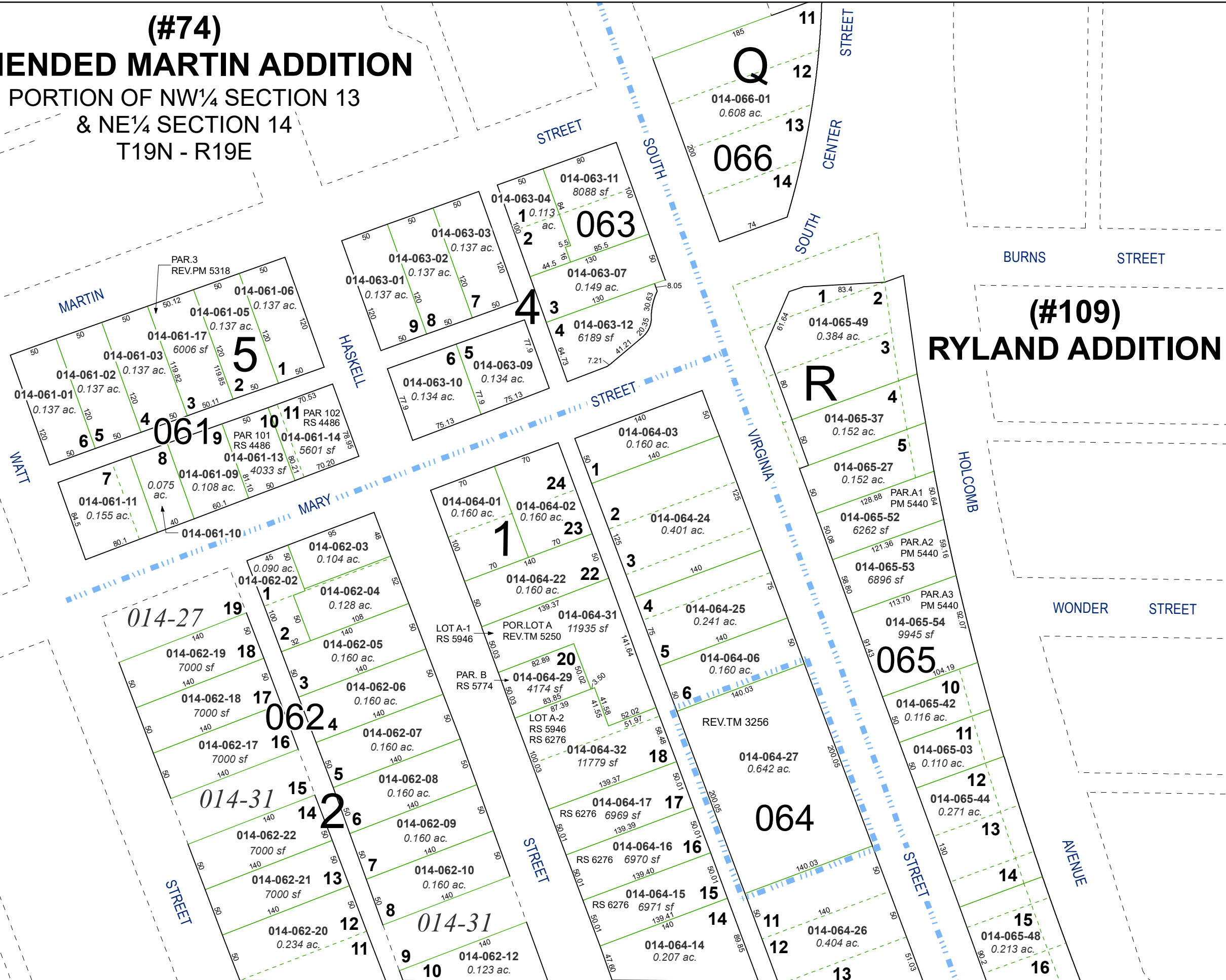


**(#74)**  
**AMENDED MARTIN ADDITION**  
 PORTION OF NW¼ SECTION 13  
 & NE¼ SECTION 14  
 T19N - R19E



**(#61) LITCH ADDITION**

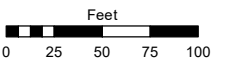
**(#109) RYLAND ADDITION**

Assessor's Map Number

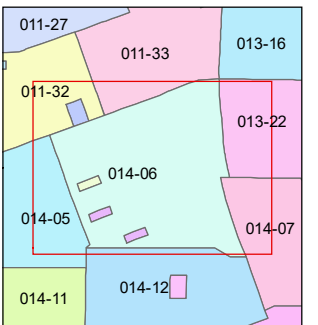
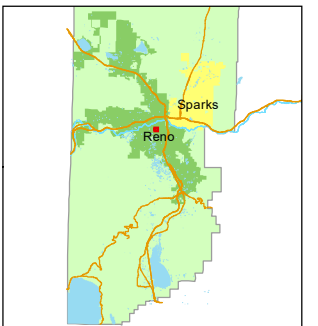
**014-06**

STATE OF NEVADA  
**WASHOE COUNTY**  
**ASSESSOR'S OFFICE**

1001 East Ninth Street, Building D  
 Reno, Nevada 89512  
 (775) 328-2231



1 inch = 100 feet



created by: TWT 10/14/2013

updated: SR 12/18/19 SR 05/08/20

KSB 07/20/20 SR 10/12/21

area previously shown on map(s):

NOTE: This map was prepared for the use of the Washoe County Assessor for assessment and illustrative purposes only. It does not represent a survey of the premises. No liability is assumed as to the sufficiency or accuracy of the data delineated hereon.