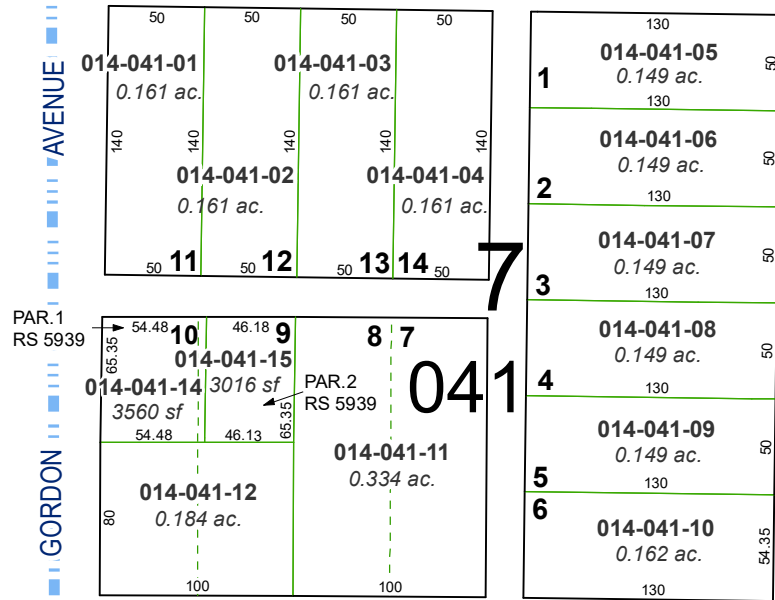
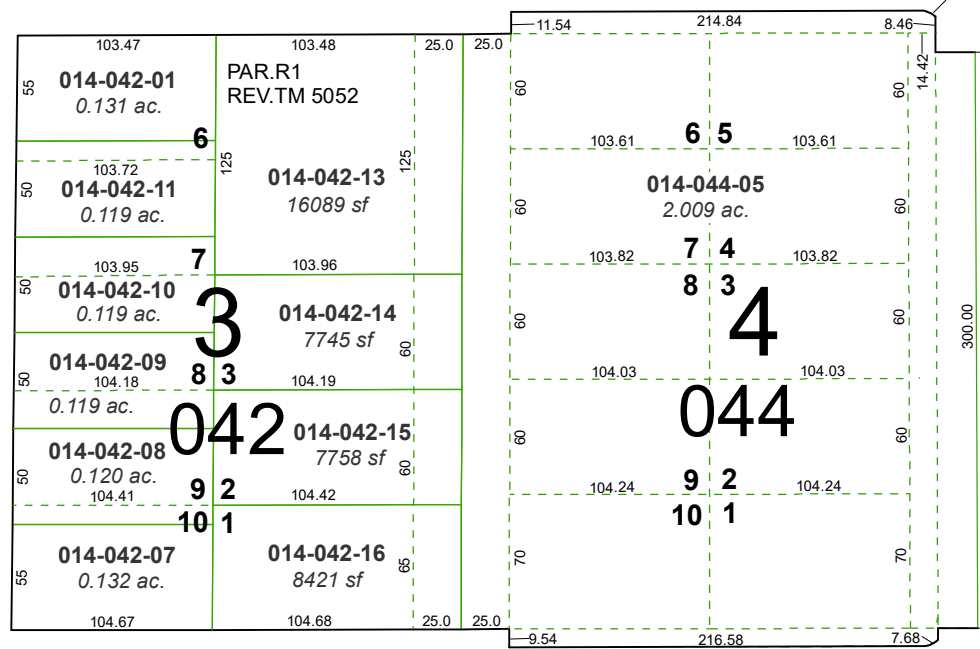


**(#82)
MARKER TRACT**



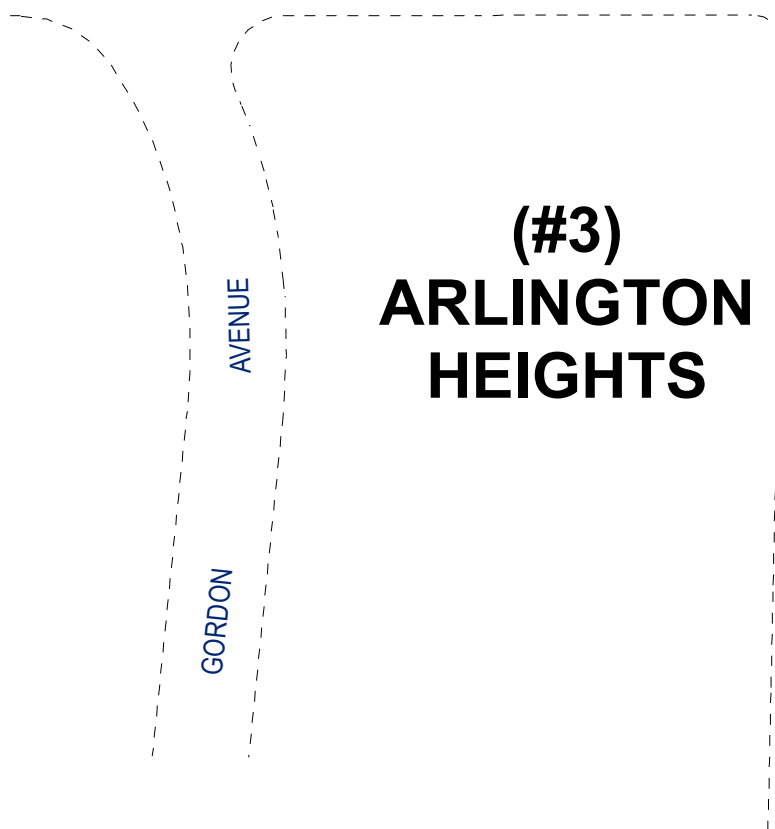
**(#238)
REINMILLER SUBDIVISION**



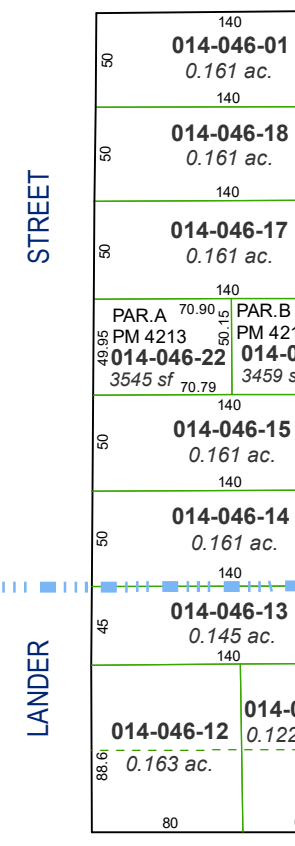
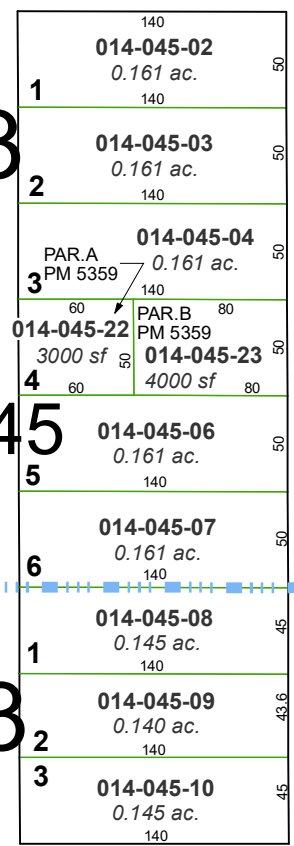
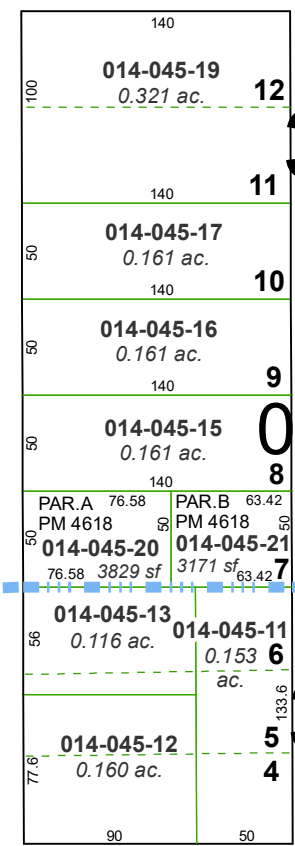
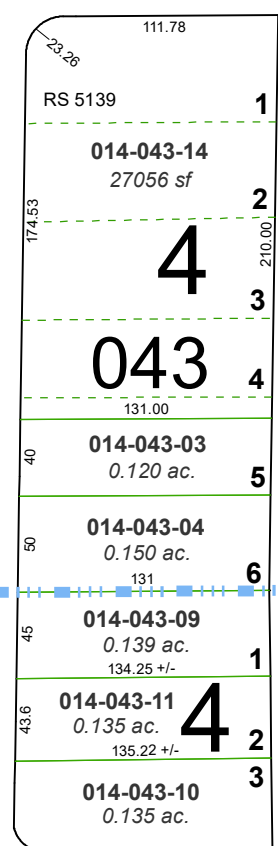
MONROE STREET

STREET

**(#3)
ARLINGTON
HEIGHTS**



PORTION OF SECTION 14
T19N - R19E



WEST

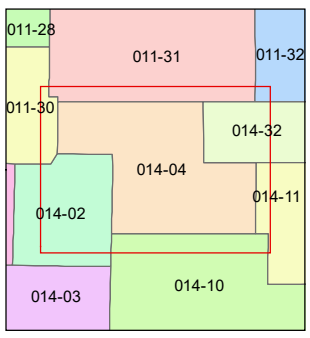
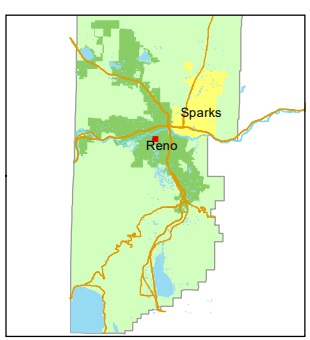
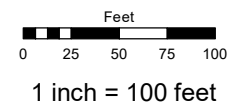
ARROYO

STREET

**(#114)
OBRIEN'S SOUTHBRAE ADDITION**

Assessor's Map Number
014-04

STATE OF NEVADA
WASHOE COUNTY
ASSESSOR'S OFFICE
1001 East Ninth Street, Building D
Reno, Nevada 89512
(775) 328-2231



created by: TWT 10/19/2011
updated: SR 04/06/18 SR 07/03/18
KSB 06/10/19 SR 10/07/21

area previously shown on map(s):

NOTE: This map was prepared for the use of the Washoe County Assessor for assessment and illustrative purposes only. It does not represent a survey of the premises. No liability is assumed as to the sufficiency or accuracy of the data delineated hereon.