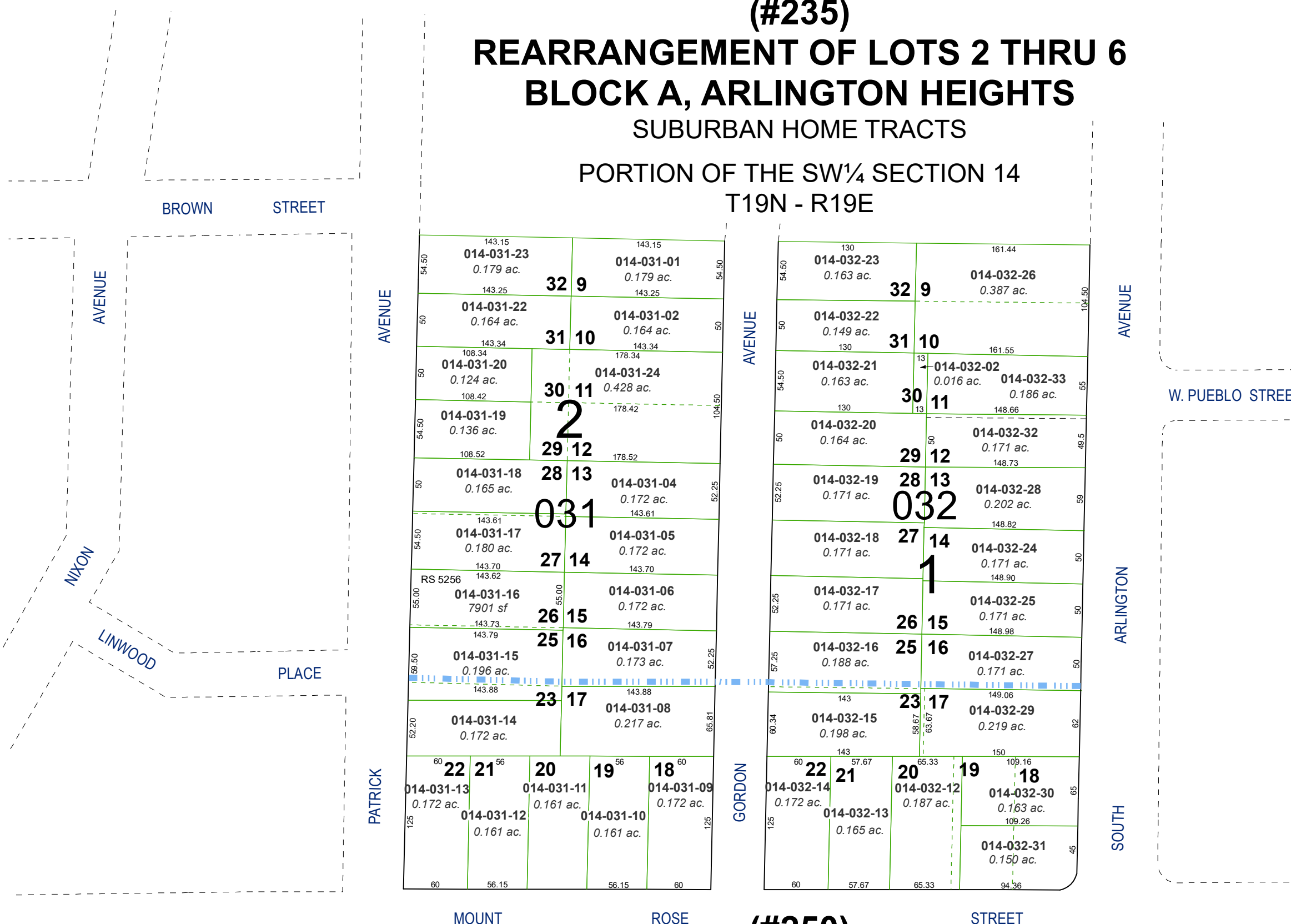


**(#235)**  
**REARRANGEMENT OF LOTS 2 THRU 6**  
**BLOCK A, ARLINGTON HEIGHTS**  
 SUBURBAN HOME TRACTS

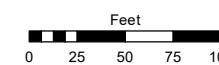
PORTION OF THE SW¼ SECTION 14  
 T19N - R19E



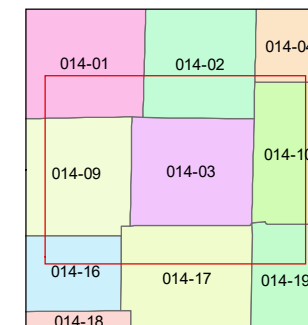
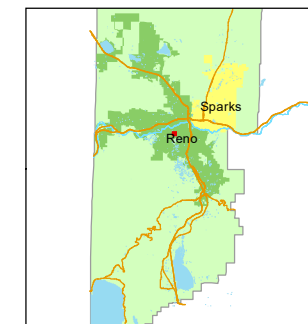
**(#250)**  
**REARRANGEMENT OF LOTS 17 THRU 24, BLOCKS 1 & 2**  
**OF REARRANGED LOTS 2 THRU 6 OF BLOCK A**  
**ARLINGTON HEIGHTS**  
 SUBURBAN HOME TRACTS

Assessor's Map Number  
**014-03**

STATE OF NEVADA  
**WASHOE COUNTY**  
**ASSESSOR'S OFFICE**  
 1001 East Ninth Street, Building D  
 Reno, Nevada 89512  
 (775) 328-2231



1 inch = 100 feet



created by: TWT 10/10/2013

updated: SR 10/07/21

area previously shown on map(s):

NOTE: This map was prepared for the use of the Washoe County Assessor for assessment and illustrative purposes only. It does not represent a survey of the premises. No liability is assumed as to the sufficiency or accuracy of the data delineated hereon.