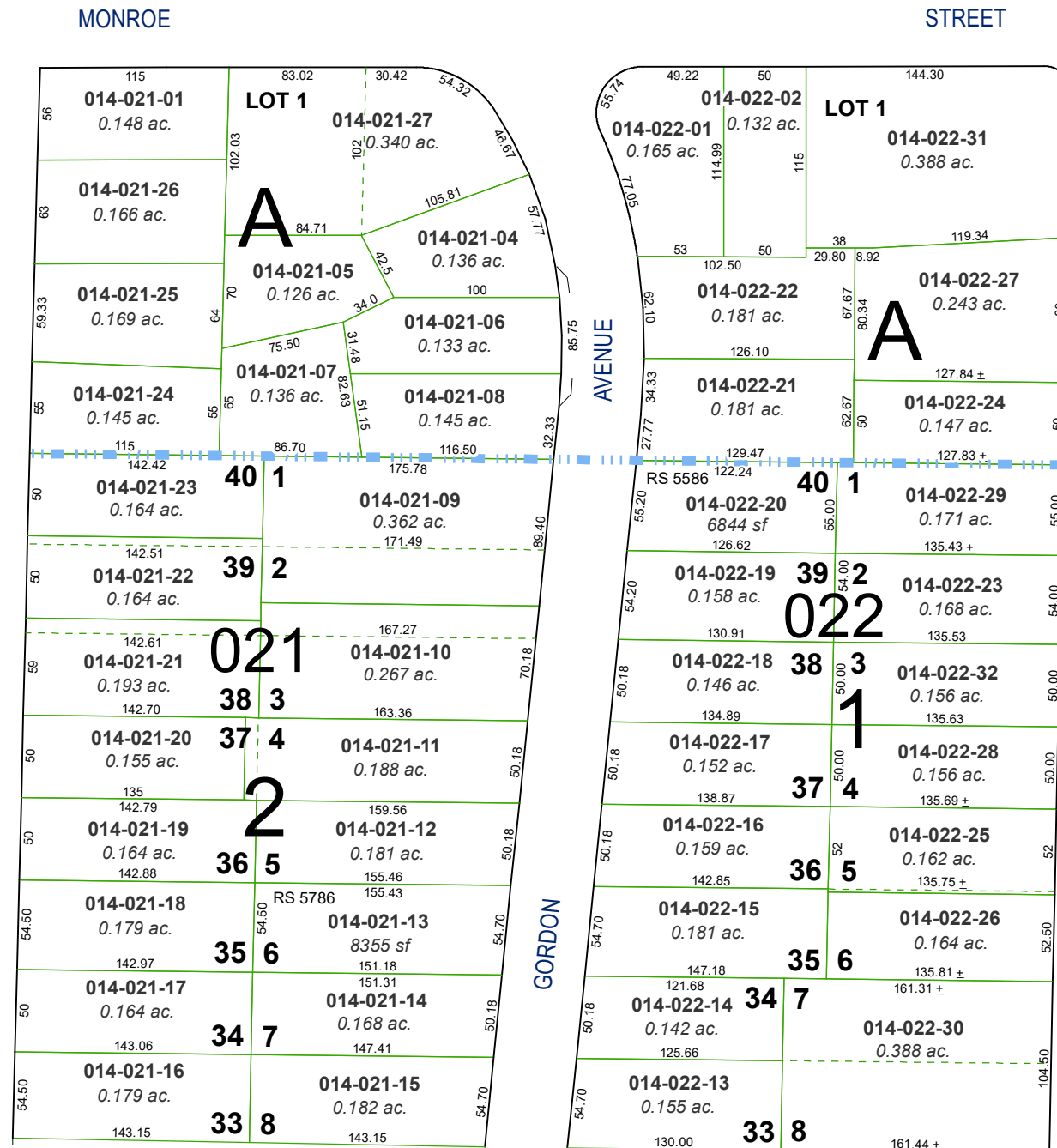
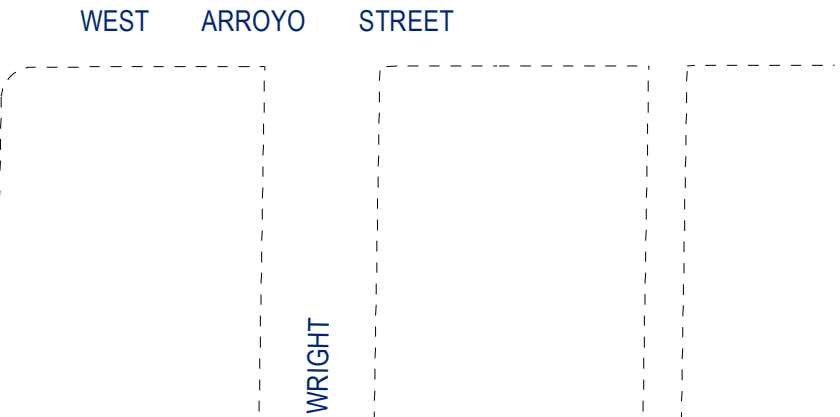


**(#283)**  
**REARRANGEMENT OF LOT 1,  
 BLOCK A, ARLINGTON HEIGHTS**  
 SUBURBAN HOME TRACTS  
 PORTION OF THE SW¼ SECTION 14  
 T19N - R19E

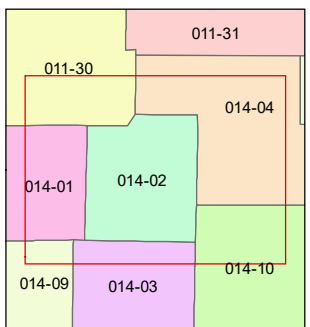
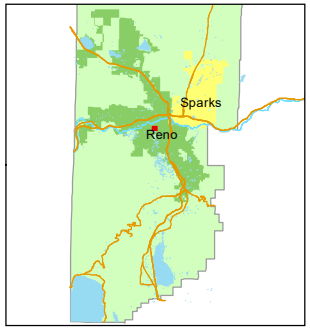
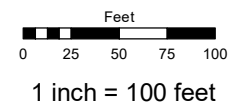


**(#235)**  
**REARRANGEMENT OF  
 LOTS 2 THRU 6, BLOCK A  
 ARLINGTON HEIGHTS**  
 SUBURBAN HOME TRACTS



Assessor's Map Number  
**014-02**

STATE OF NEVADA  
**WASHOE COUNTY**  
**ASSESSOR'S OFFICE**  
 1001 East Ninth Street, Building D  
 Reno, Nevada 89512  
 (775) 328-2231



created by: TWT 10/03/2013  
 updated: SR 10/07/21

area previously shown on map(s):  
 \_\_\_\_\_

NOTE: This map was prepared for the use of the Washoe County Assessor for assessment and illustrative purposes only. It does not represent a survey of the premises. No liability is assumed as to the sufficiency or accuracy of the data delineated hereon.