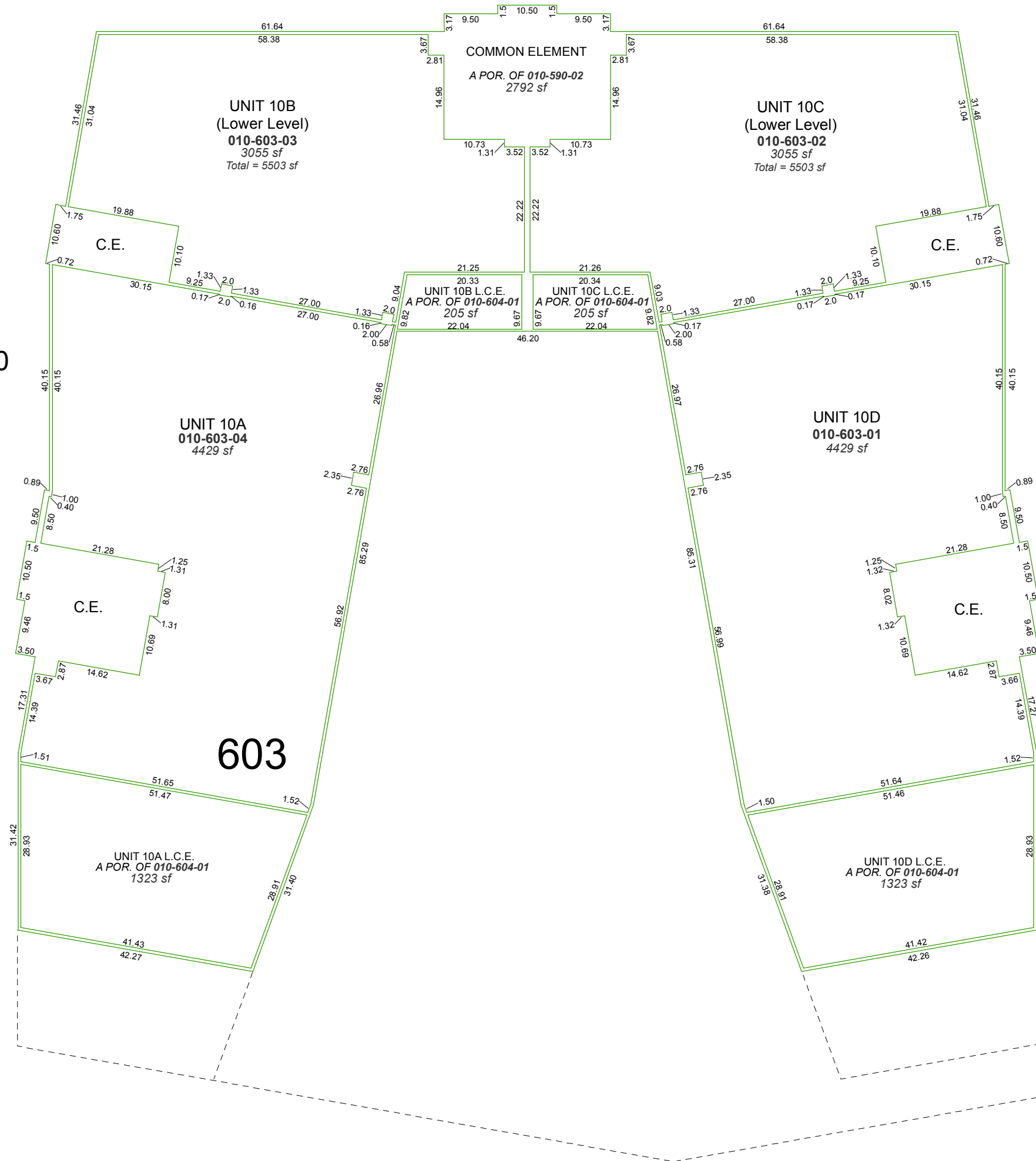


# (#4795) RIVERSIDE DRIVE CONDOMINIUMS

A POR. OF THE SE ¼ OF SEC. 10  
T19N - R19E

LEVEL 10



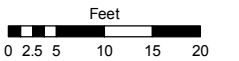
NOTES:  
- C.E. = COMMON ELEMENT  
- L.C.E. = LIMITED COMMON ELEMENT  
- COMBINED COMMON ELEMENT PARCEL  
SHOWN ON PAGE 010-59-S1  
- COMBINED LIMITED COMMON ELEMENT  
PARCEL SHOWN ON PAGE 010-60-S4

Assessor's Map Number

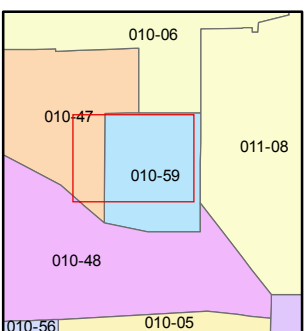
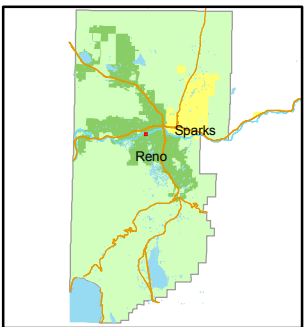
**010-60-S2**

STATE OF NEVADA  
**WASHOE COUNTY**  
ASSESSOR'S OFFICE  
Joshua G. Wilson, Assessor

1001 East Ninth Street  
Building D  
Reno, Nevada 89512  
(775) 328-2231



1 inch = 20 feet



created by: NLH 7/23/2010

last updated: \_\_\_\_\_

area previously shown on map(s)

010-06

NOTE: This map was prepared for the use of the Washoe County Assessor for assessment and illustrative purposes only. It does not represent a survey of the premises. No liability is assumed as to the sufficiency or accuracy of the data delineated hereon.