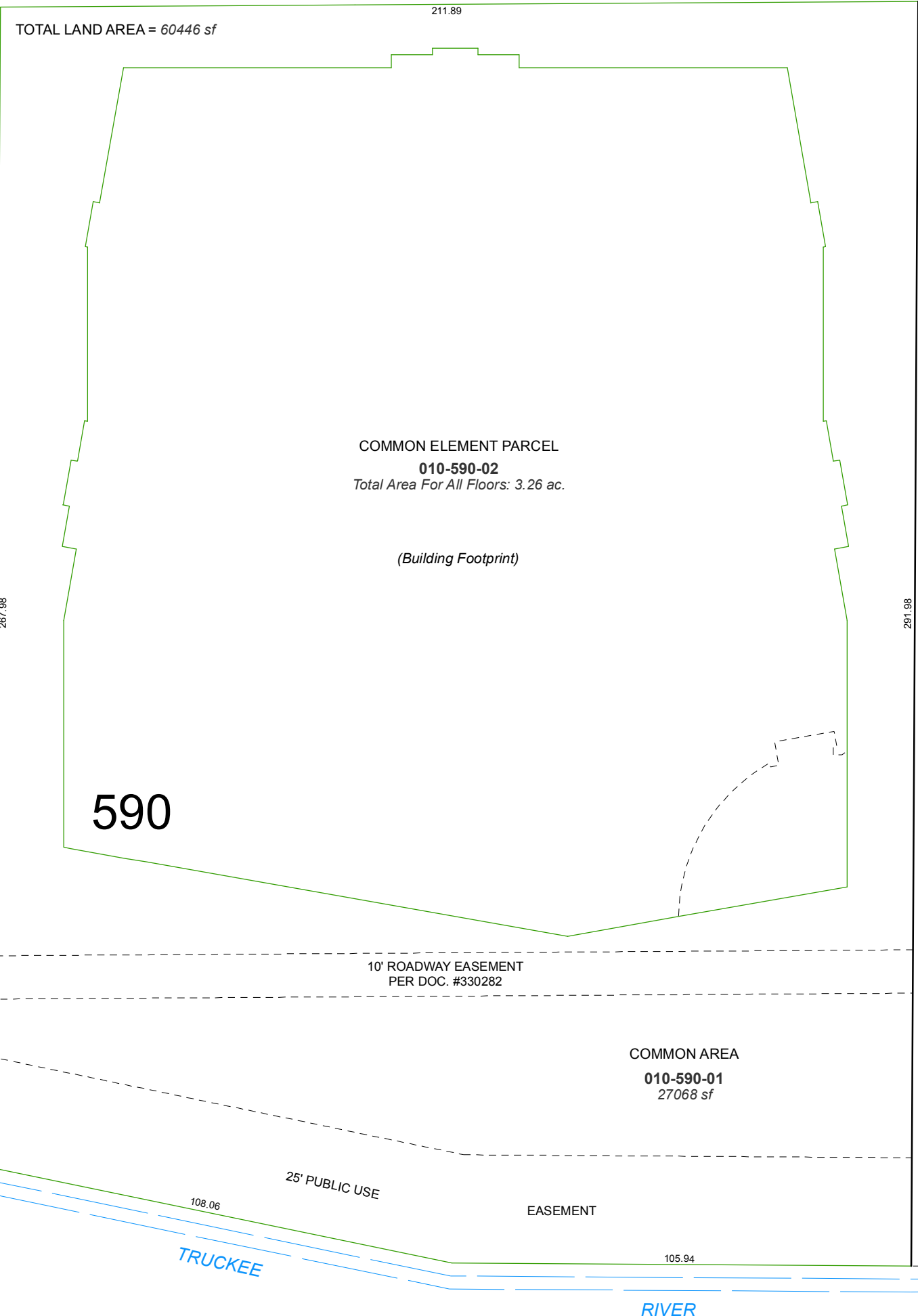


# (#4795) RIVERSIDE DRIVE CONDOMINIUMS

A POR. OF THE SE ¼ OF SEC. 10  
T19N - R19E



NOTES:  
- COMBINED COMMON ELEMENT ACREAGE  
INCLUDES ALL COMMON ELEMENTS SHOWN ON  
PAGES 010-59-S2 THRU 010-60-S4  
- LIMITED COMMON ELEMENT PARCEL SHOWN  
ON PAGE 010-60-S4  
- COMBINED LIMITED COMMON ELEMENT SQUARE  
FOOTAGE INCLUDES ALL LIMITED COMMON ELEMENTS  
SHOWN ON PAGES 010-59-S5 THRU 010-60-S4

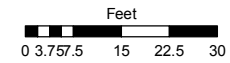
(UNNAMED ALLEY)

Assessor's Map Number

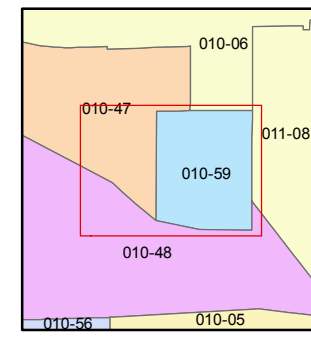
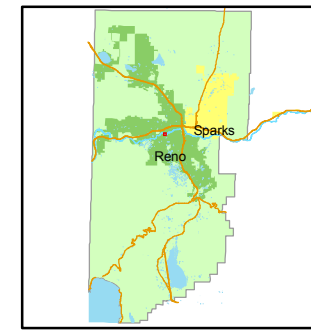
**010-59-S1**

STATE OF NEVADA  
**WASHOE COUNTY**  
ASSESSOR'S OFFICE  
Joshua G. Wilson, Assessor

1001 East Ninth Street  
Building D  
Reno, Nevada 89512  
(775) 328-2231



1 inch = 30 feet



RIVERSIDE DRIVE

created by: NLH 7/23/2010

last updated: \_\_\_\_\_

area previously shown on map(s)  
010-06

NOTE: This map was prepared for the use of the Washoe County Assessor for assessment and illustrative purposes only. It does not represent a survey of the premises. No liability is assumed as to the sufficiency or accuracy of the data delineated hereon.