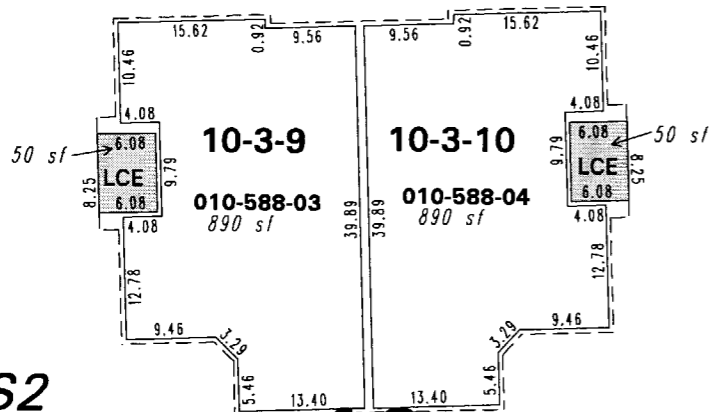


010-58-S8

010-58-S5

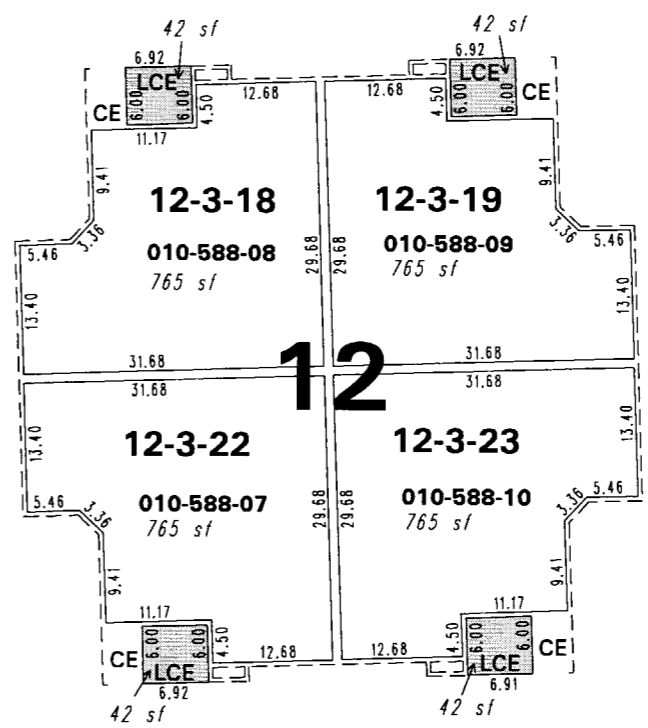
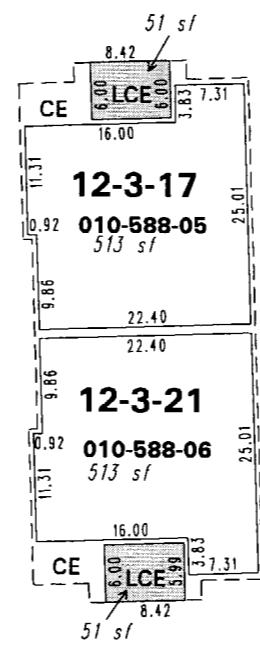
**(#4698)**  
**THE VILLAGE AT IDLEWILD PARK**  
 PORTION OF THE NE 1/4 SECTION 15  
 T19N - R19E  
 third floor units

**588**



010-58-S2

**10**



**12**

**LEGEND**

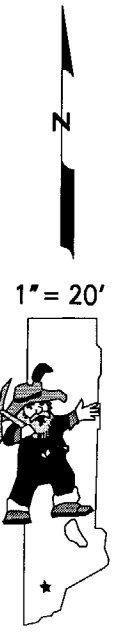
CE Common Element  
 LCE Limited Common Element

**2** Building Number

**UNIT 2-1-8**

BUILDING FLOOR UNIT  
 NUMBER NUMBER NUMBER

010-05



NOTE: This map is prepared for the use of the Washoe County Assessor for assessment and illustrative purposes only. It does not represent a survey of the premises. No liability is assumed as to the sufficiency or the accuracy of the data delineated herein.

Office of Washoe County Assessor, Nevada - Robert W. McGowan

This area previously shown on 010-05

NOTE: Areas of parcels which are less than 2 acres are shown in square feet.

Drawn by CFB 10/8/2006  
 Revised \_\_\_\_\_