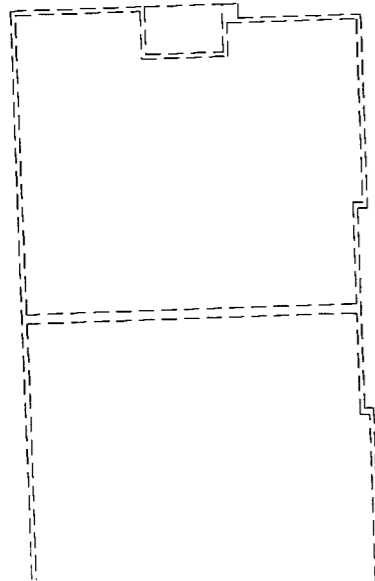
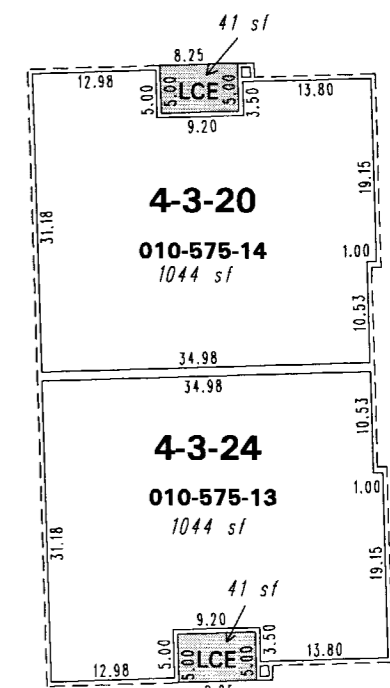
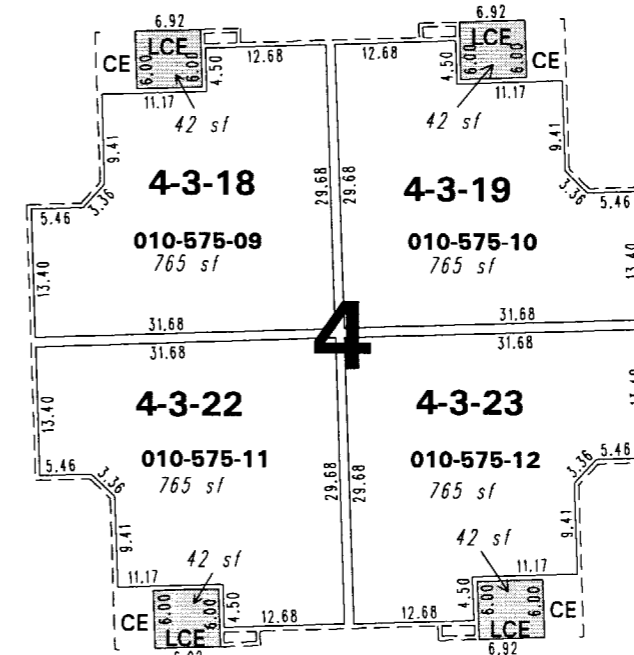
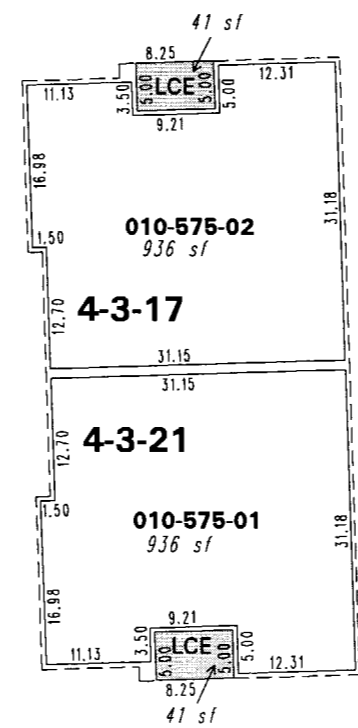
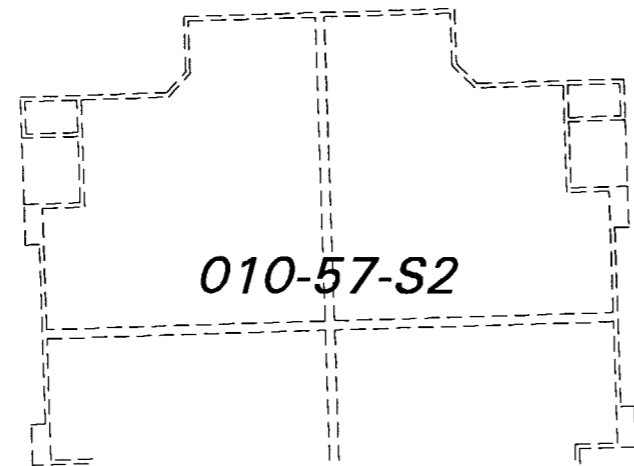
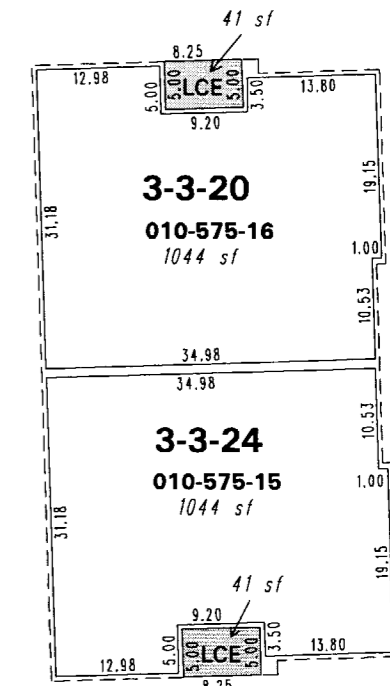
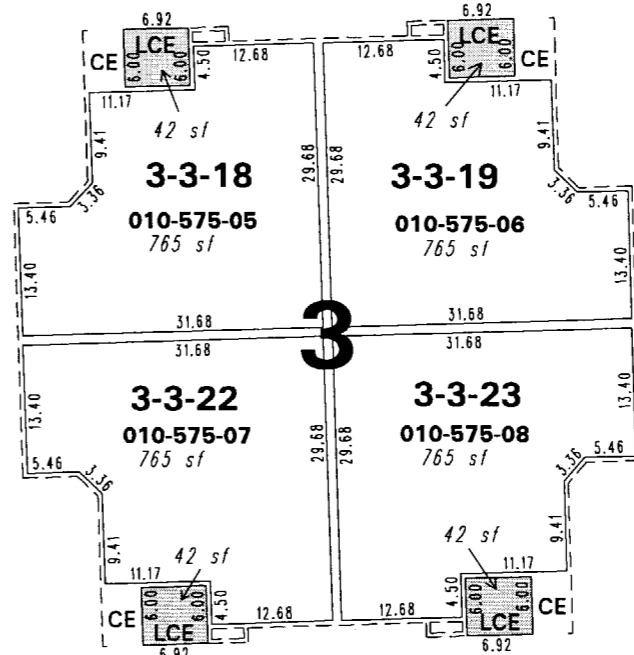
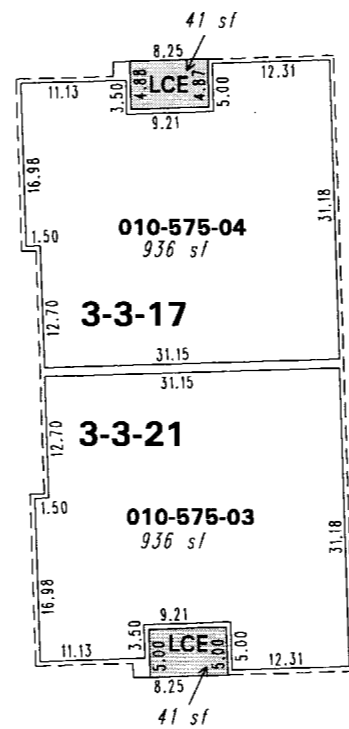
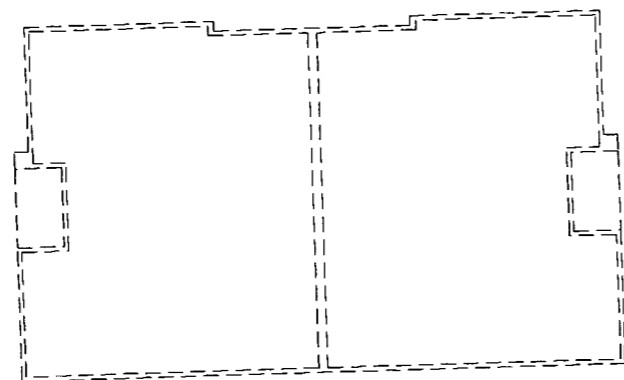
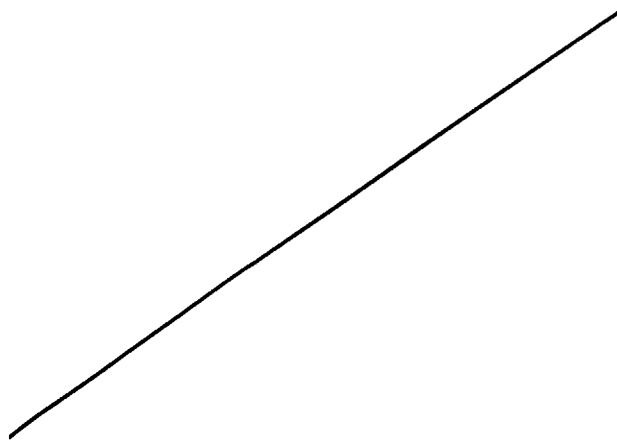


(#4698)
THE VILLAGE AT IDLEWILD PARK
 PORTION OF THE NE 1/4 SECTION 15
 T19N - R19E
 third floor units

010-57-S5



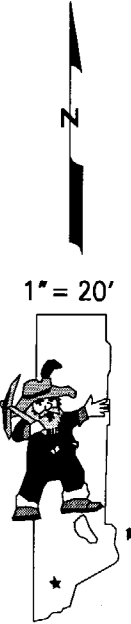
LEGEND
 CE Common Element
 LCE Limited Common Element
2 Building Number
UNIT 2-1-8
 BUILDING FLOOR UNIT
 NUMBER NUMBER NUMBER

010-57-S2

575

010-57-S8

010-58-S2



NOTE: This map is prepared for the use of the Washoe County Assessor for assessment and illustrative purposes only. It does not represent a survey of the premises. No liability is assumed as to the sufficiency or the accuracy of the data delineated hereon.

Office of Washoe County Assessor, Nevada - Robert W. McGowan

This area previously shown on 010-05

Drawn by CFB 10/6/2006
 Revised

NOTE: Areas of parcels which are less than 2 acres are shown in square feet.