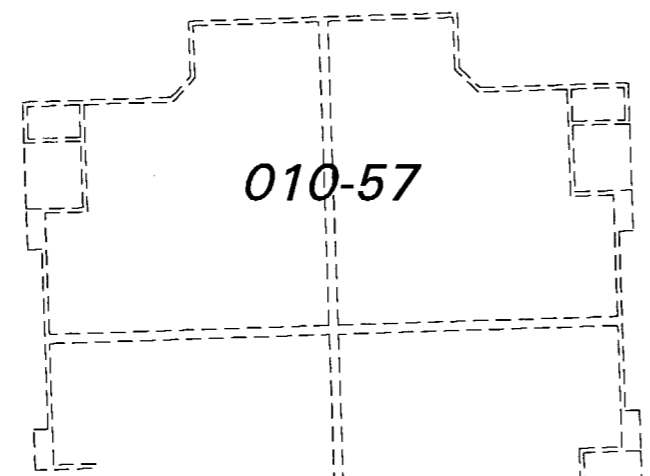
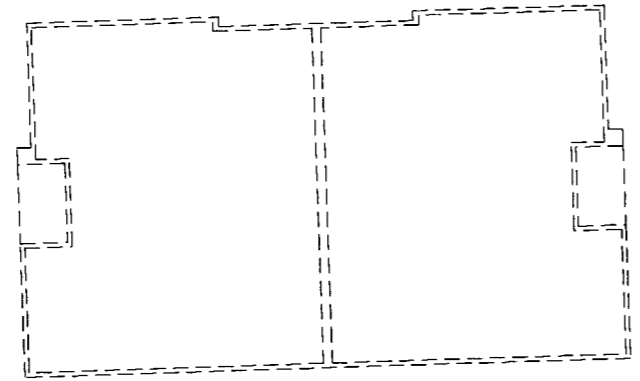
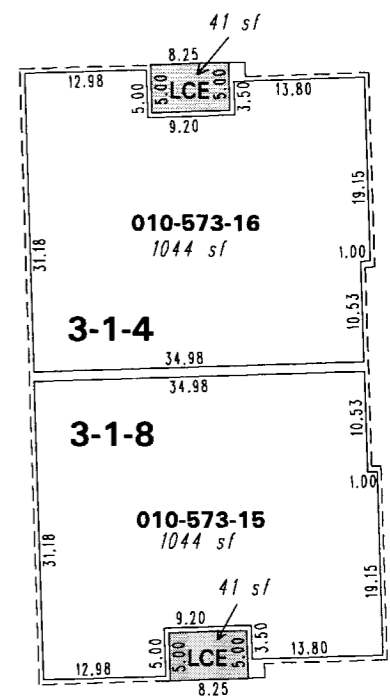
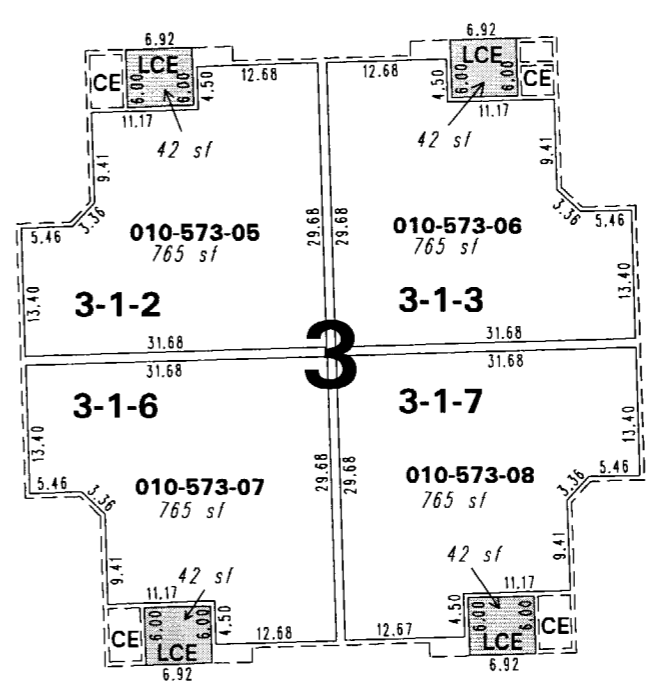
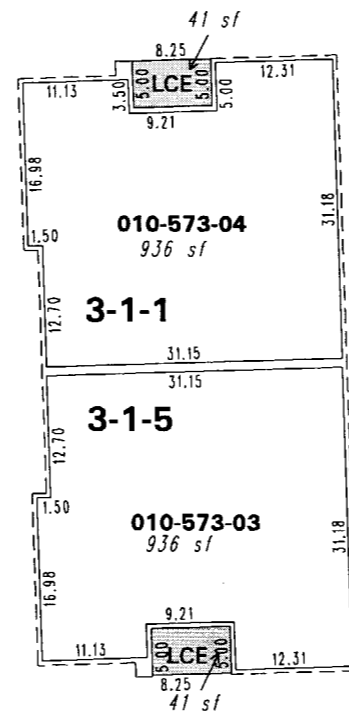
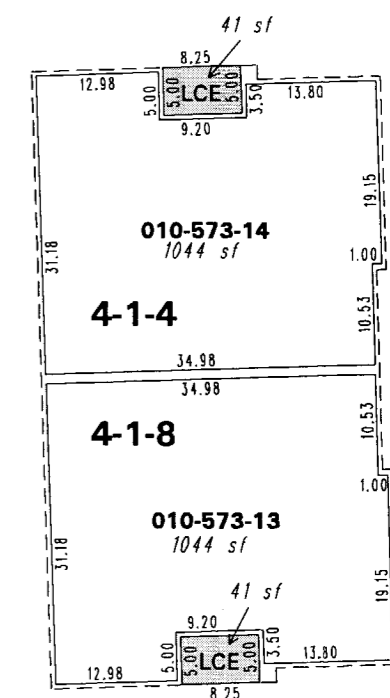
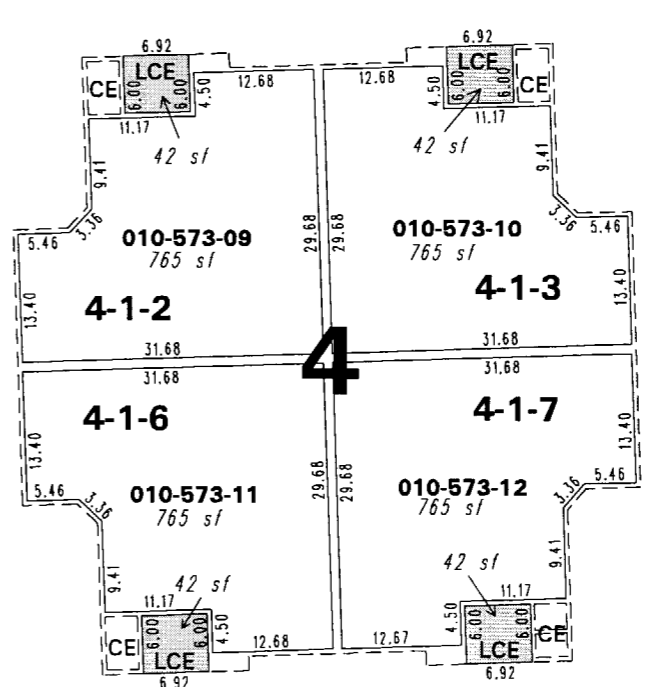
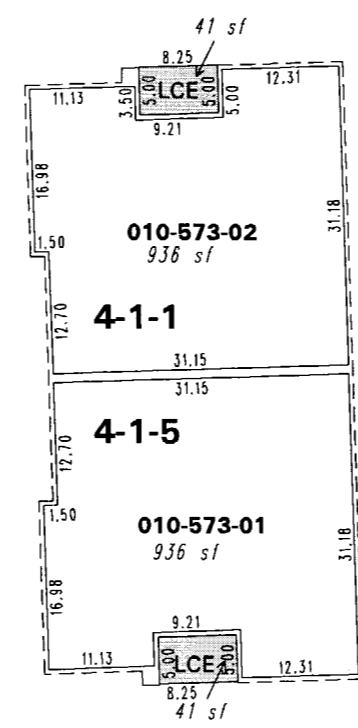


# (#4698) THE VILLAGE AT IDLEWILD PARK PORTION OF THE NE 1/4 SECTION 15 T19N - R19E ground floor units



**LEGEND**  
 CE Common Element  
 LCE Limited Common Element  
**2** Building Number  
**UNIT 2-1-8**  
 BUILDING FLOOR UNIT  
 NUMBER NUMBER NUMBER



# 573

# 4

010-57-S6  
010-58



1" = 20'



NOTE: This map is prepared for the use of the Washoe County Assessor for assessment and illustrative purposes only. It does not represent a survey of the premises. No liability is assumed as to the sufficiency or the accuracy of the data delineated hereon.

Office of Washoe County Assessor, Nevada - Robert W. McGowan

This area previously shown on 010-05

Drawn by CFB 10/6/2006  
 Revised

NOTE: Areas of parcels which are less than 2 acres are shown in square feet.