

AMENDED 1200 RIVERSIDE DRIVE

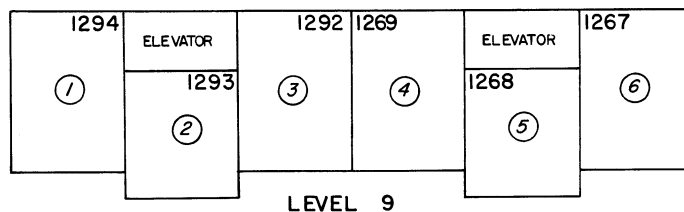
INTEREST IN COMMON AREA

UNITS - 1218, 1221, 1268, 1271
 1243, 1246, 1293, 1296
 .8117%
 .82344% OF 1.426%
 .82344% OF BUILDING C

UNITS - 1294, 1292, 1269, 1267
 1297, 1295, 1272, 1270
 1244, 1242, 1219, 1217
 1247, 1245, 1222, 1220
 1.0199%
 1.03465% OF 1.426%
 1.03465% OF BUILDING C

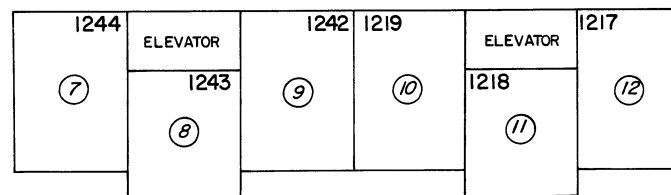
UNITS - 1223, 1273, 1224, 1274
 1248, 1298, 1249, 1299
 1.4257%
 1.44632% OF 1.426%
 1.44632% OF BUILDING C

BUILDING A

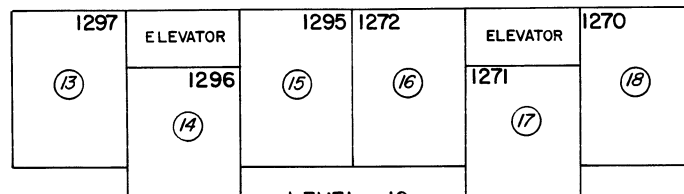


LEVEL 9

BUILDING B

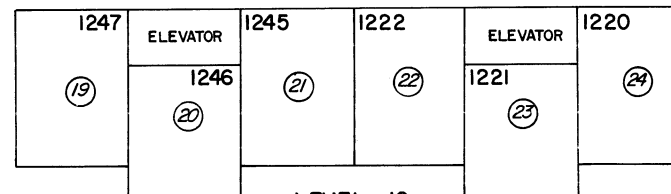


LEVEL 9

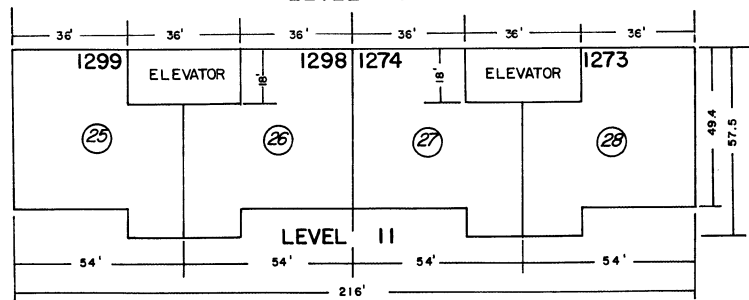


LEVEL 10

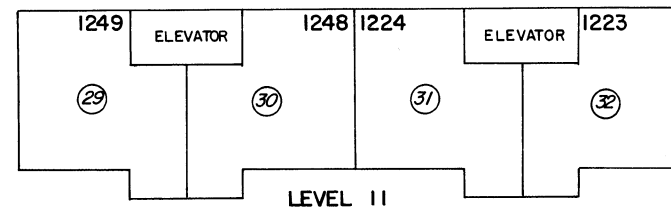
473



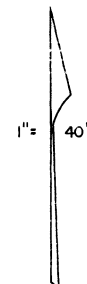
LEVEL 10



DIMENSIONS TYPICAL ALL UNITS LEVEL 11



LEVEL 11



NOTE: This Map is prepared for the use of the Washoe County Assessor for Assessment and illustrative purposes only, it does not represent survey of the premises. No liability is assumed as to the sufficiency or accuracy of the data delineated hereon.

Assessor's Map County of Washoe, Nevada

NOTE - ASSESSOR'S BLOCK NUMBERS SHOWN IN ELLIPSES
 ASSESSOR'S PARCEL NUMBERS SHOWN IN CIRCLES

drawn by	S.O. 72
checked	
revised	
superseded	B.T. 4/78