

AMENDED 1200 RIVERSIDE DRIVE

10-47-S-2

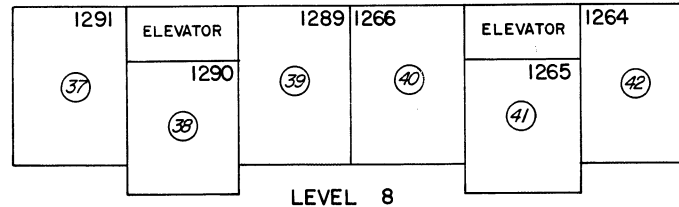
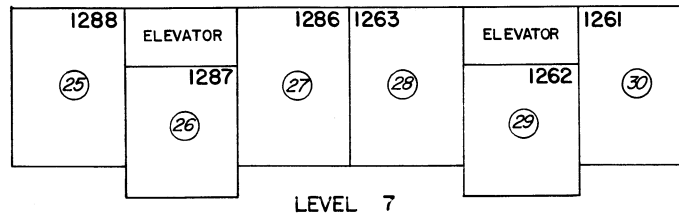
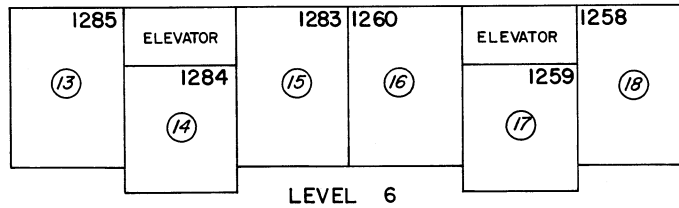
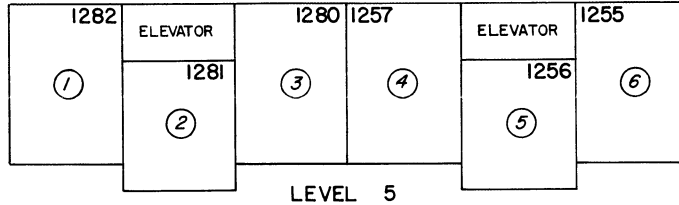
INTEREST IN COMMON AREA

UNITS-1281,1256,1231,1206
1284,1259,1234,1209
1287,1262,1237,1212
1290,1265,1240,1215

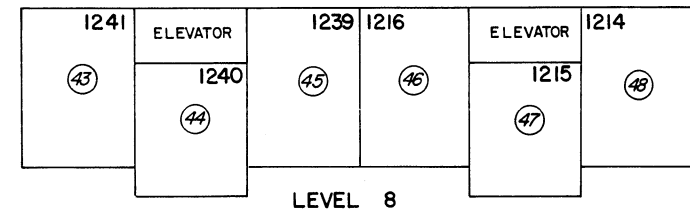
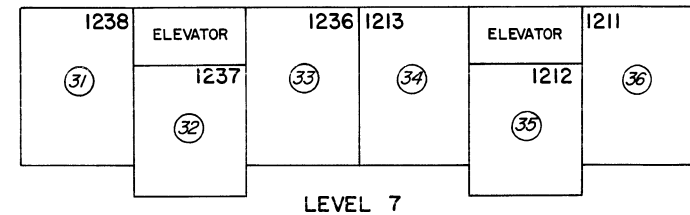
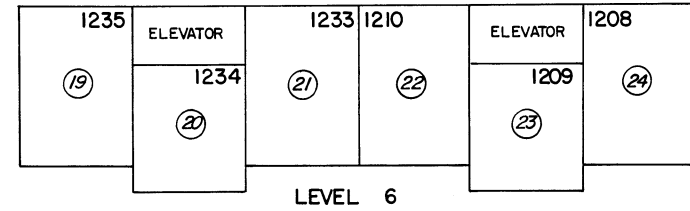
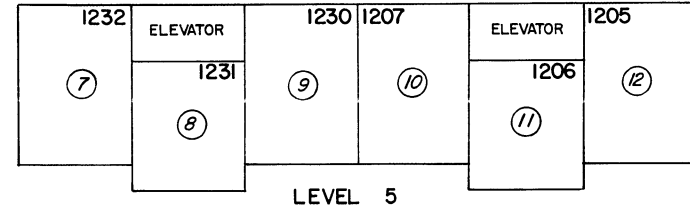
UNITS-1282,1280,1257,1255,1232,1214,1230,1207
1205,1285,1283,1260,1258,1235,1233,1210
1208,1288,1286,1263,1261,1238,1236,1213
1211,1291,1289,1266,1264,1241,1239,1216

1.0199%
1.03465% OF 1.426%
1.03465% OF BUILDING C

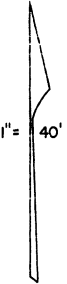
BUILDING A



BUILDING B



472



NOTE: This Map is prepared for the use of the Washoe County Assessor for Assessment and illustrative purposes only, it does not represent survey of the premises. No liability is assumed as to the sufficiency or accuracy of the data delineated hereon.

Assessor's Map County of Washoe, Nevada

NOTE - ASSESSOR'S BLOCK NUMBERS SHOWN IN ELLIPSES
ASSESSOR'S PARCEL NUMBERS SHOWN IN CIRCLES

drawn by	S.O. 72
checked	
revised	
superseded	B.T. 4/78