

(# 1265)  
 AMENDED  
 1200 RIVERSIDE DRIVE  
 A CONDOMINIUM

10-47-S-1

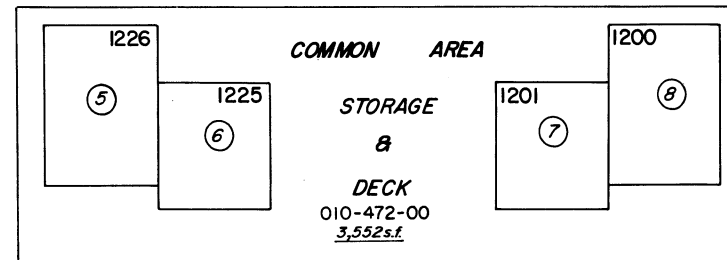
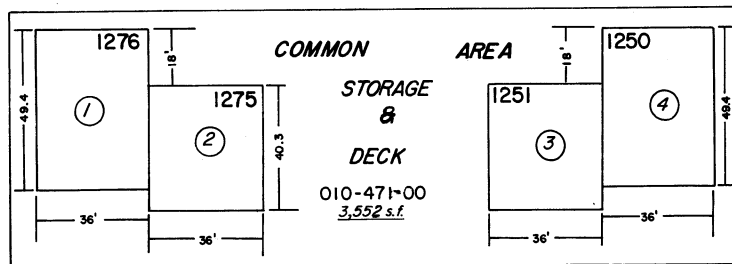
INTEREST IN COMMON AREA

UNITS - 1275, 1251, 1225, 1201  
 1278, 1253, 1228, 1203  
 .8117%  
 .82344% OF 1.426%  
 .82344% OF BUILDING C

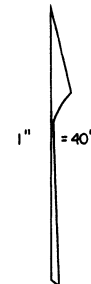
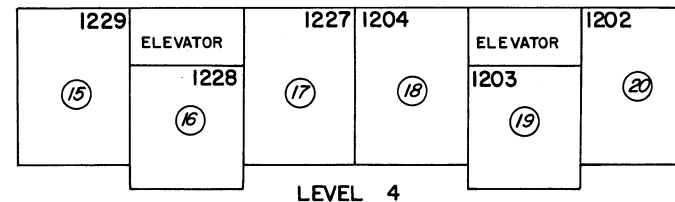
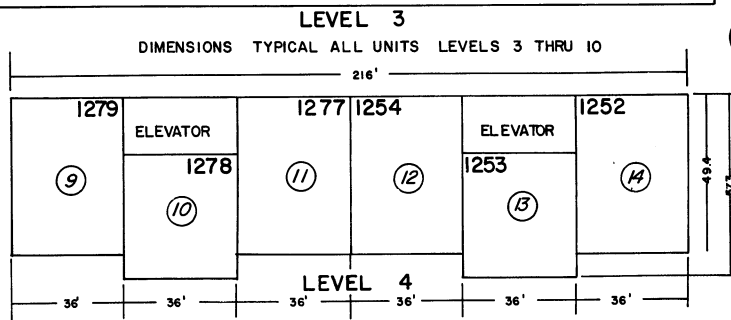
UNITS - 1276, 1250, 1226, 1200  
 1279, 1277, 1254, 1252  
 1229, 1227, 1204, 1202  
 1.0199%  
 1.03465% OF 1.426%  
 1.03465% OF BUILDING C

BUILDING A

BUILDING B



471



NOTE: This Map is prepared for the use of the Washoe County Assessor for Assessment and illustrative purposes only, it does not represent survey of the premises. No liability is assumed as to the sufficiency or accuracy of the data delineated hereon.

*Assessor's Map County of Washoe, Nevada*  
 NOTE - ASSESSOR'S BLOCK NUMBERS SHOWN IN ELLIPSES  
 ASSESSOR'S PARCEL NUMBERS SHOWN IN CIRCLES

drawn by	S.O. - 72
checked	
revised	TWT 4/16/08
superseded	B.T. 4/78