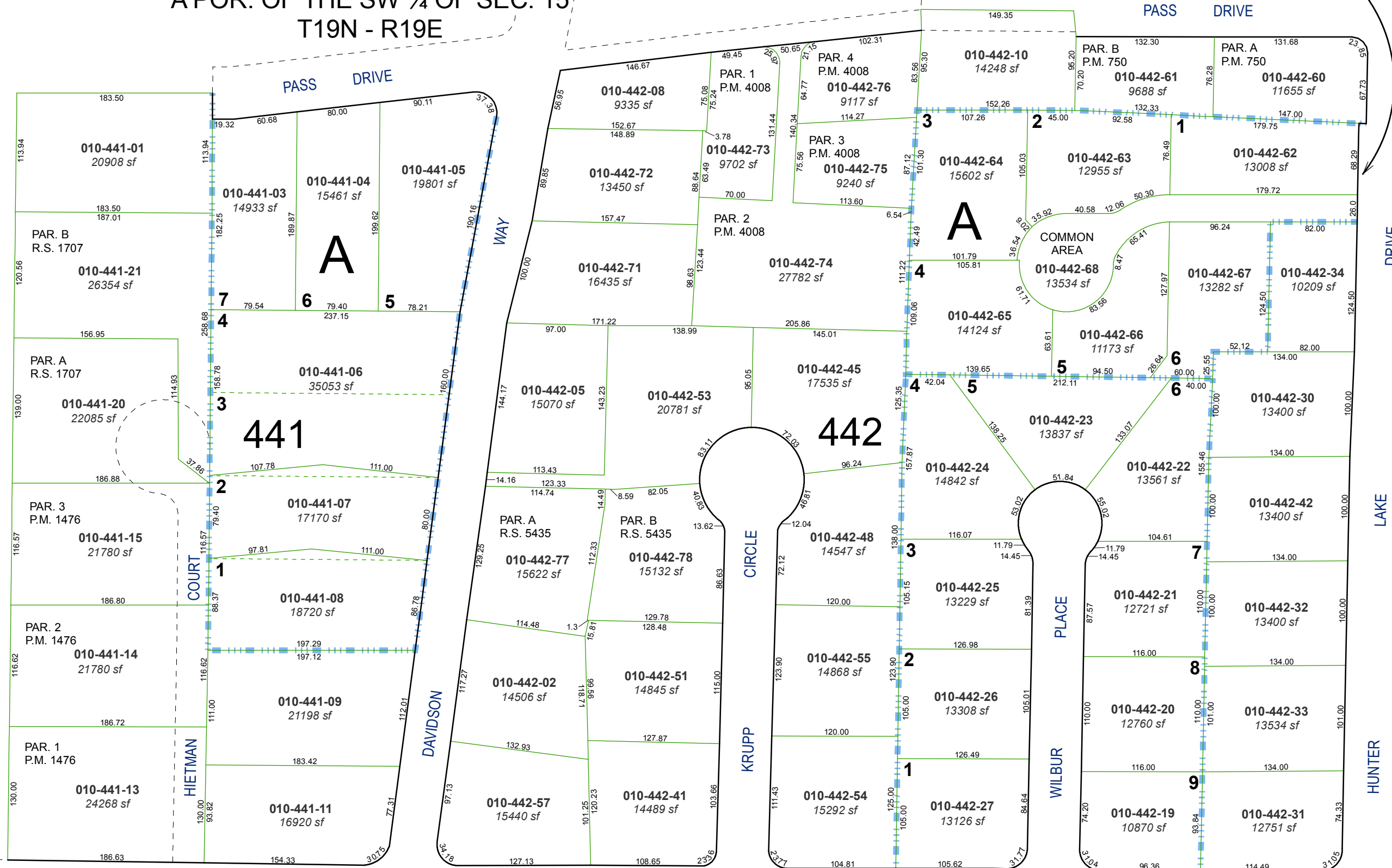


(#520)
TENGANA VIEW SUB.
 A POR. OF THE SW ¼ OF SEC. 15
 T19N - R19E

(#2707)
GURR ESTATES UNIT NO. 1



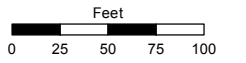
(#503)
WILBUR SUBDIVISION

Assessor's Map Number

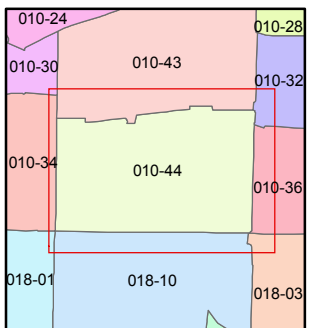
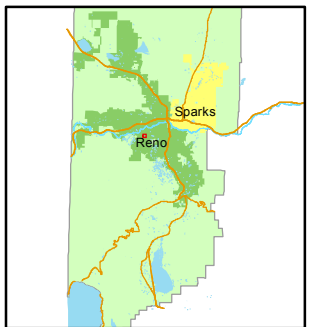
010-44

STATE OF NEVADA
WASHOE COUNTY
ASSESSOR'S OFFICE
 Joshua G. Wilson, Assessor

1001 East Ninth Street
 Building D
 Reno, Nevada 89512
 (775) 328-2231



1 inch = 100 feet



created by: NLH 6/20/2012

last updated: _____

area previously shown on map(s) _____

NOTE: This map was prepared for the use of the Washoe County Assessor for assessment and illustrative purposes only. It does not represent a survey of the premises. No liability is assumed as to the sufficiency or accuracy of the data delineated hereon.