

PORTIONS OF THE NW 1/4 OF SEC. 15 & THE NE 1/4 OF SEC. 16

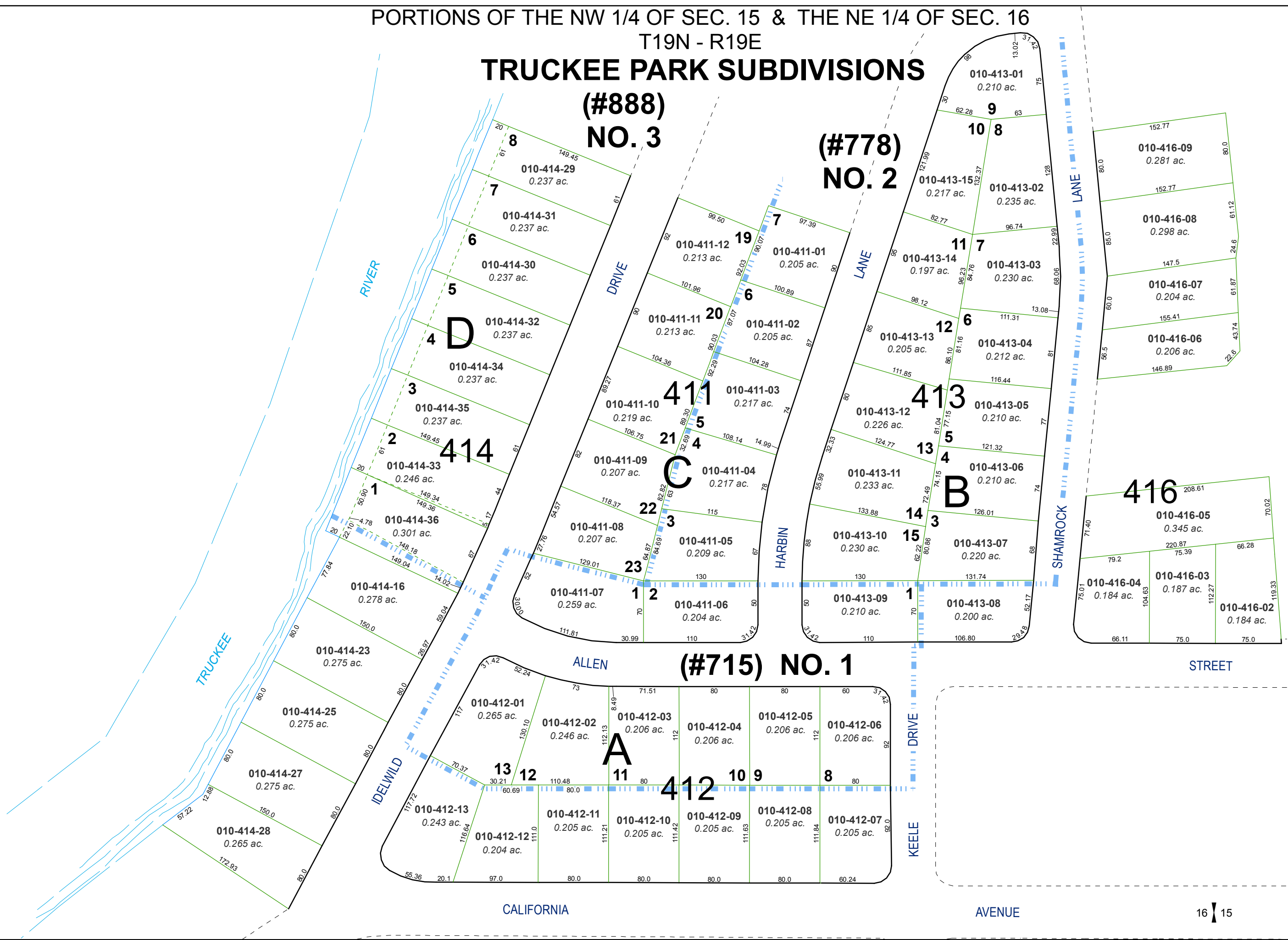
T19N - R19E

# TRUCKEE PARK SUBDIVISIONS

## (#888) NO. 3

## (#778) NO. 2

## (#715) NO. 1

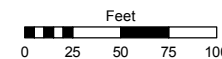


Assessor's Map Number

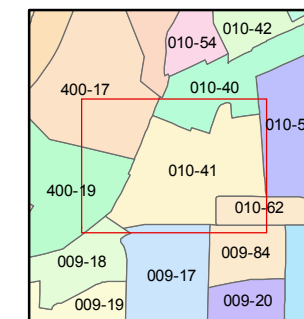
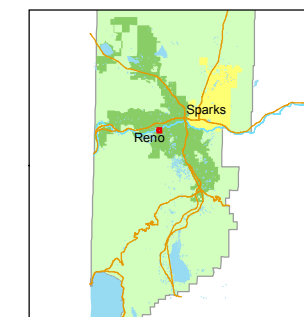
### 010-41

STATE OF NEVADA  
**WASHOE COUNTY**  
 ASSESSOR'S OFFICE  
 Joshua G. Wilson, Assessor

1001 East Ninth Street  
 Building D  
 Reno, Nevada 89512  
 (775) 328-2231



1 inch = 100 feet



created by: TWT 2/28/2013

last updated:

area previously shown on map(s)

NOTE: This map was prepared for the use of the Washoe County Assessor for assessment and illustrative purposes only. It does not represent a survey of the premises. No liability is assumed as to the sufficiency or accuracy of the data delineated herein.