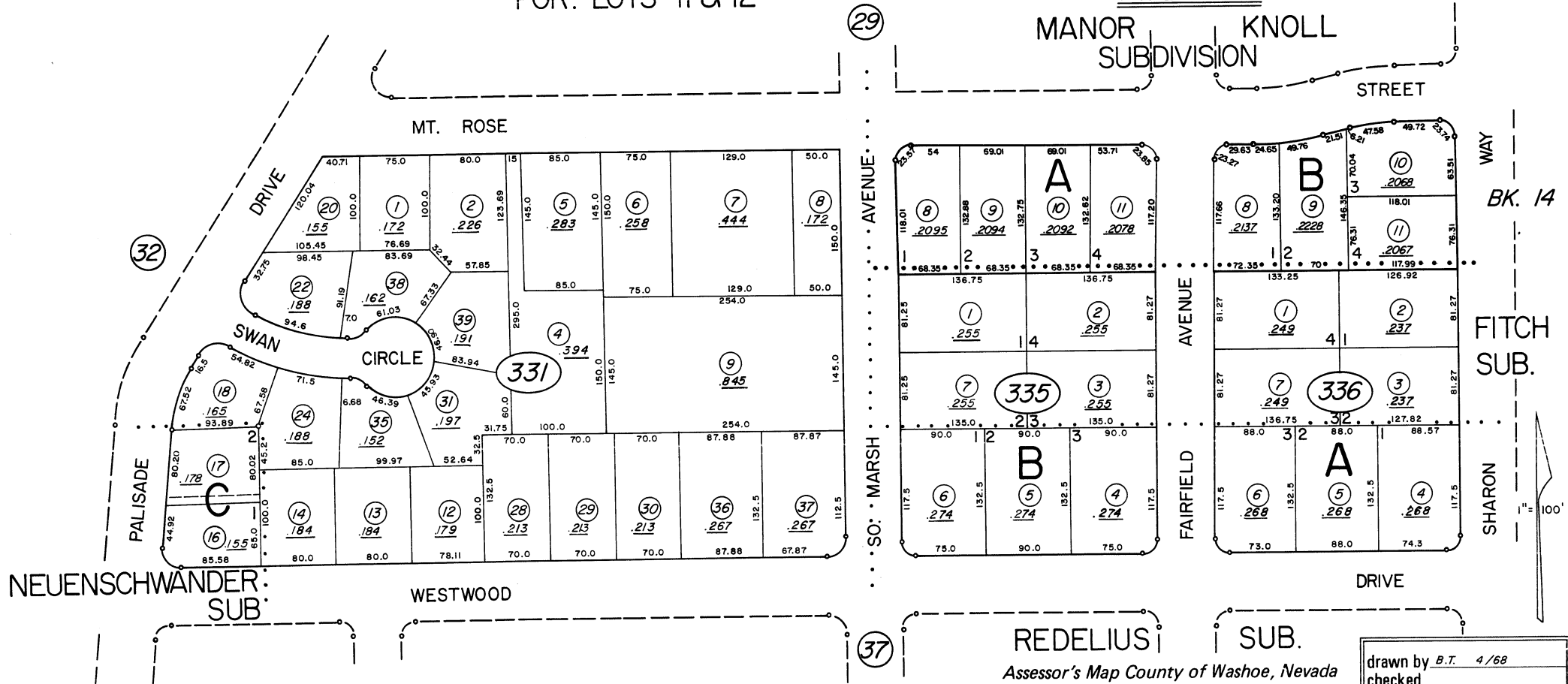


PORTION SE<sup>4</sup> SEC. 15, T.19N.-R.19E.

FAIRFIELD HEIGHTS  
POR. LOTS 11 & 12

AMENDED  
MANOR SUBDIVISION KNOLL



NOTE: This Map is prepared for the use of the Washoe County Assessor for Assessment and illustrative purposes only, it does not represent survey of the premises. No liability is assumed as to the sufficiency or accuracy of the data delineated hereon.

Assessor's Map County of Washoe, Nevada  
NOTE - ASSESSOR'S BLOCK NUMBERS SHOWN IN ELLIPSES  
ASSESSOR'S PARCEL NUMBERS SHOWN IN CIRCLES

|            |      |      |
|------------|------|------|
| drawn by   | B.T. | 4/68 |
| checked    |      |      |
| revised    | 9/75 |      |
| superseded |      |      |