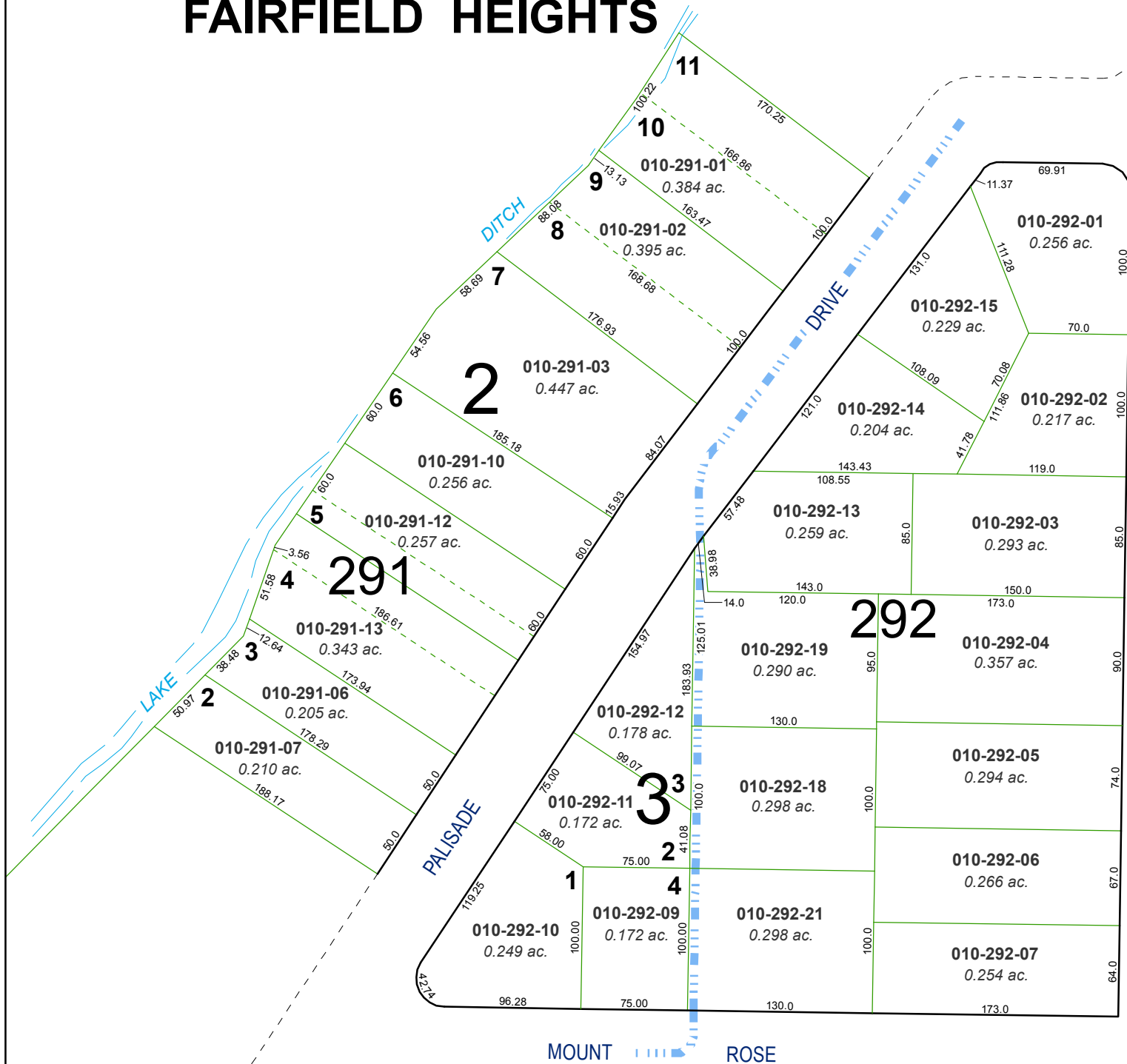
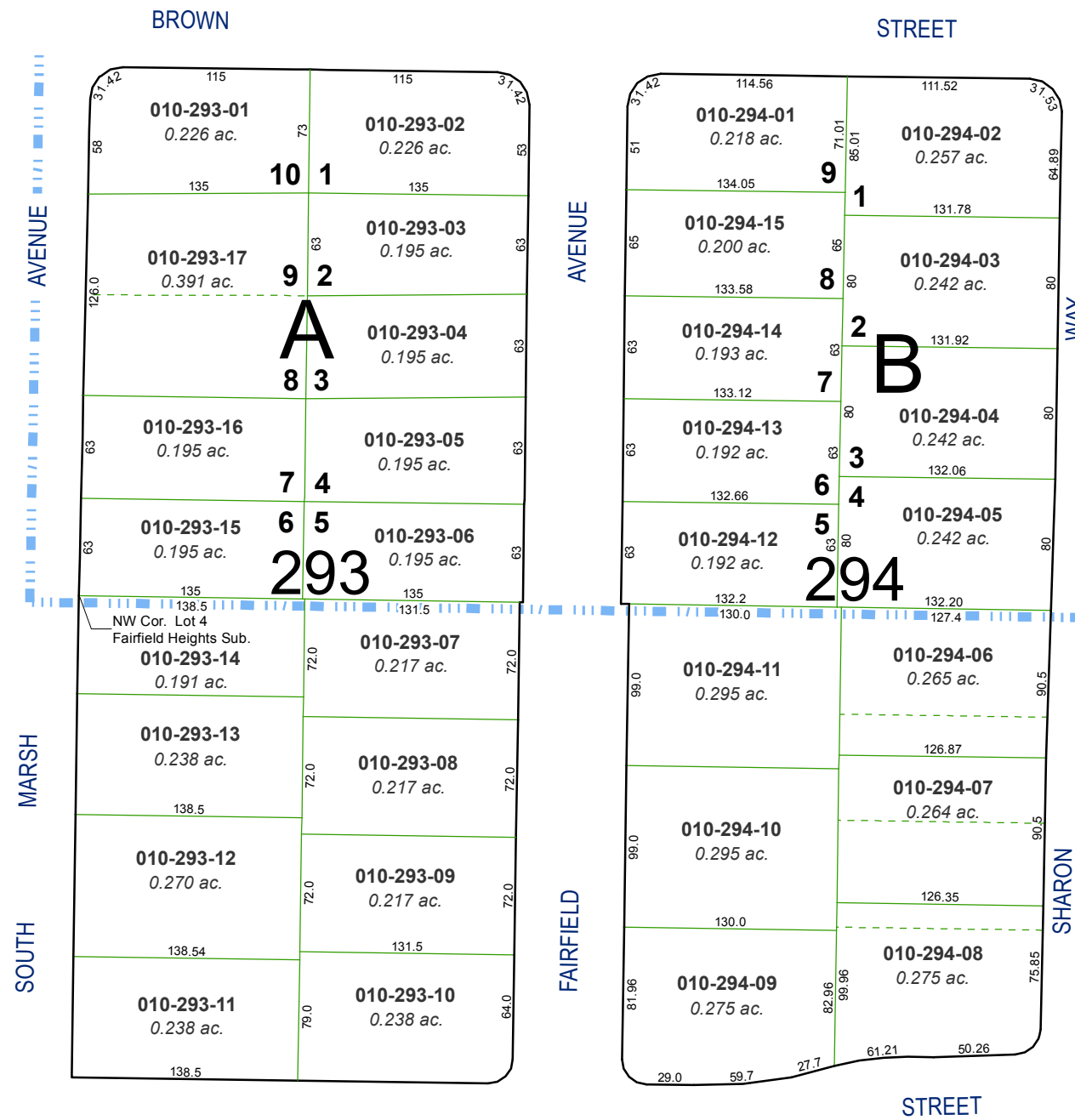


(#478)
RE-ARRANGEMENT
 OF BLOCK 2 & PART OF BLOCK 3
FAIRFIELD HEIGHTS



(#452)
HANCOCK RESUBDIVISION
 PORTION OF THE NE 1/4 OF THE SE 1/4 OF SECTION 15
 T19N - R19E



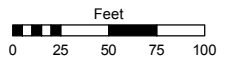
(#29)
FAIRFIELD HEIGHTS

Assessor's Map Number

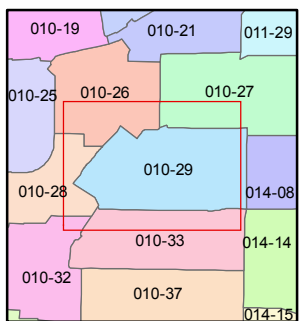
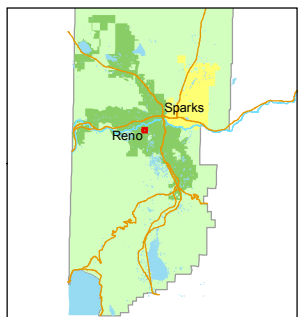
010-29

STATE OF NEVADA
WASHOE COUNTY
 ASSESSOR'S OFFICE
 Joshua G. Wilson, Assessor

1001 East Ninth Street
 Building D
 Reno, Nevada 89512
 (775) 328-2231



1 inch = 100 feet



created by: TWT 3/8/2013

last updated: _____

area previously shown on map(s) _____

NOTE: This map was prepared for the use of the Washoe County Assessor for assessment and illustrative purposes only. It does not represent a survey of the premises. No liability is assumed as to the sufficiency or accuracy of the data delineated hereon.