

DUNN TRACT (RS #78) GELMSTEDT TRACT (RS #78)

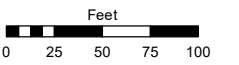
Assessor's Map Number

010-25

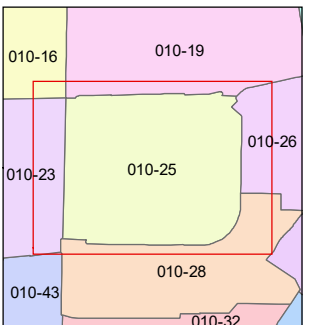
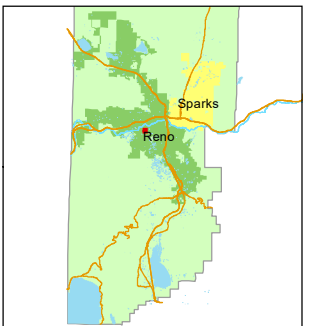
PORTION OF SE1/4 SECTION 15 T19N - R19E

STATE OF NEVADA
WASHOE COUNTY ASSESSOR'S OFFICE

1001 East Ninth Street, Building D
Reno, Nevada 89512
(775) 328-2231



1 inch = 100 feet

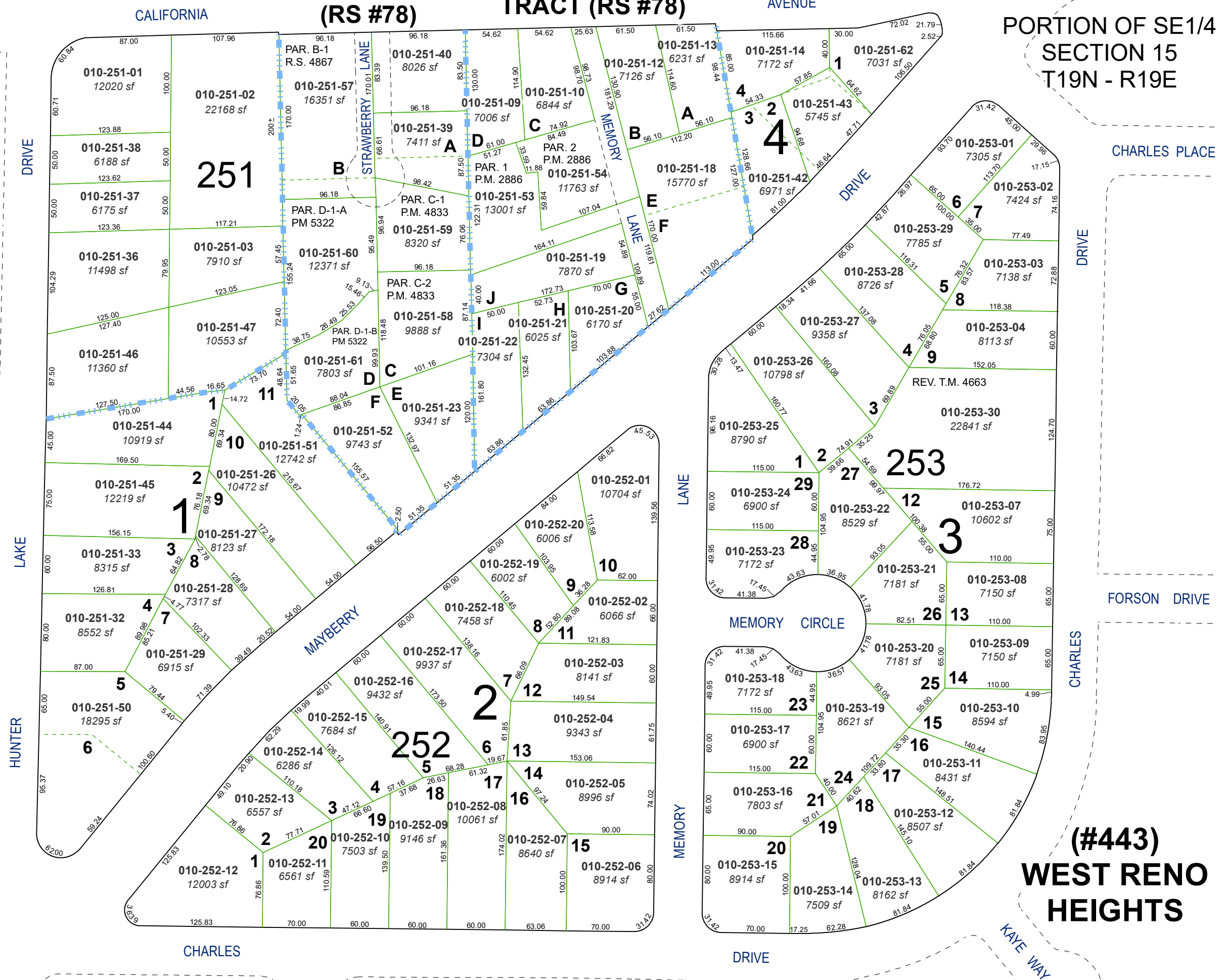


created by: SR 12/18/2017

updated: SR 07/14/21

area previously shown on map(s):

NOTE: This map was prepared for the use of the Washoe County Assessor for assessment and illustrative purposes only. It does not represent a survey of the premises. No liability is assumed as to the sufficiency or accuracy of the data delineated hereon.



(#443) WEST RENO HEIGHTS

MAYBERRY DRIVE

CHARLES

DRIVE

KAYE WAY