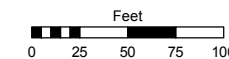


Assessor's Map Number

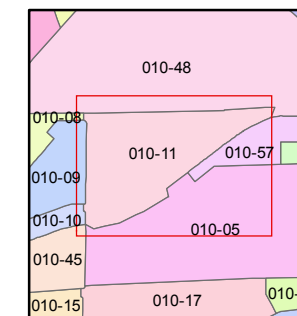
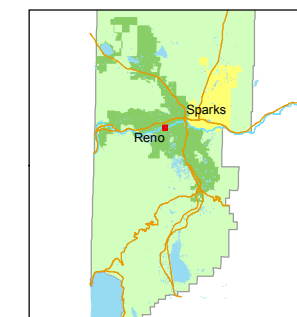
010-11

STATE OF NEVADA
WASHOE COUNTY
ASSESSOR'S OFFICE
Joshua G. Wilson, Assessor

1001 East Ninth Street
Building D
Reno, Nevada 89512
(775) 328-2231



1 inch = 100 feet



created by: TWT 12/26/2012

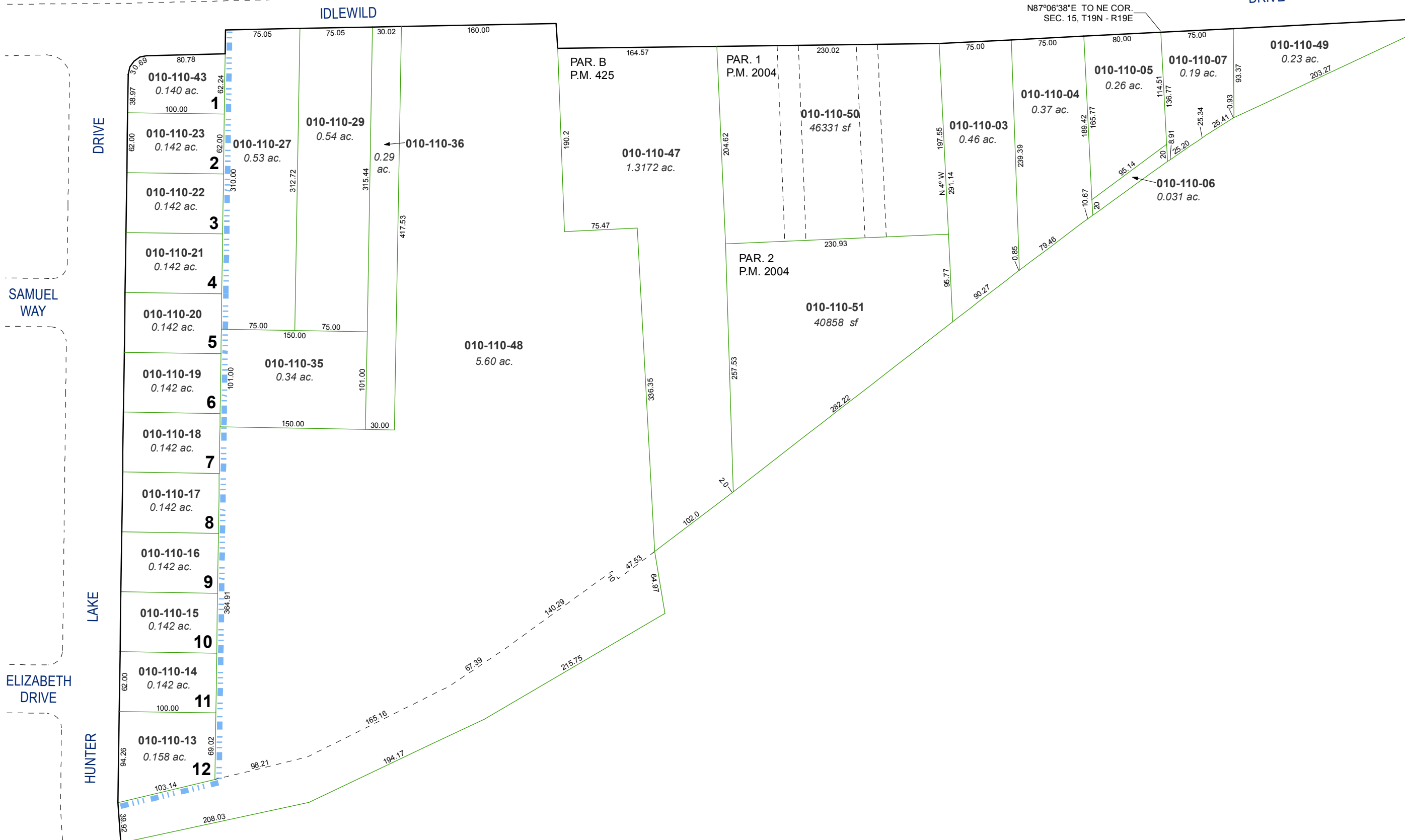
last updated: _____

area previously shown on map(s) _____

NOTE: This map was prepared for the use of the Washoe County Assessor for assessment and illustrative purposes only. It does not represent a survey of the premises. No liability is assumed as to the sufficiency or accuracy of the data delineated hereon.

PORTION OF THE NE 1/4 OF SECTION 15 T19N - R19E

(#808) PARKSIDE SUBDIVISION



SAMUEL WAY

DRIVE

LAKE

ELIZABETH DRIVE

HUNTER