

UNION PACIFIC RAILROAD

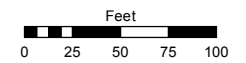
(#8) CHISM ADDITION

(#91) AMENDED POWNING'S ADDITION

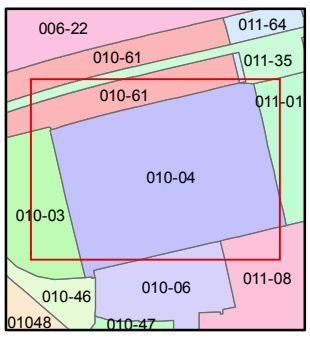
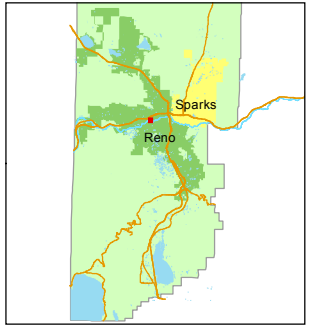
Assessor's Map Number
010-04

STATE OF NEVADA
WASHOE COUNTY
ASSESSOR'S OFFICE
Michael E. Clark, Assessor

1001 East Ninth Street
Building D
Reno, Nevada 89512
(775) 328-2231



1 inch = 100 feet

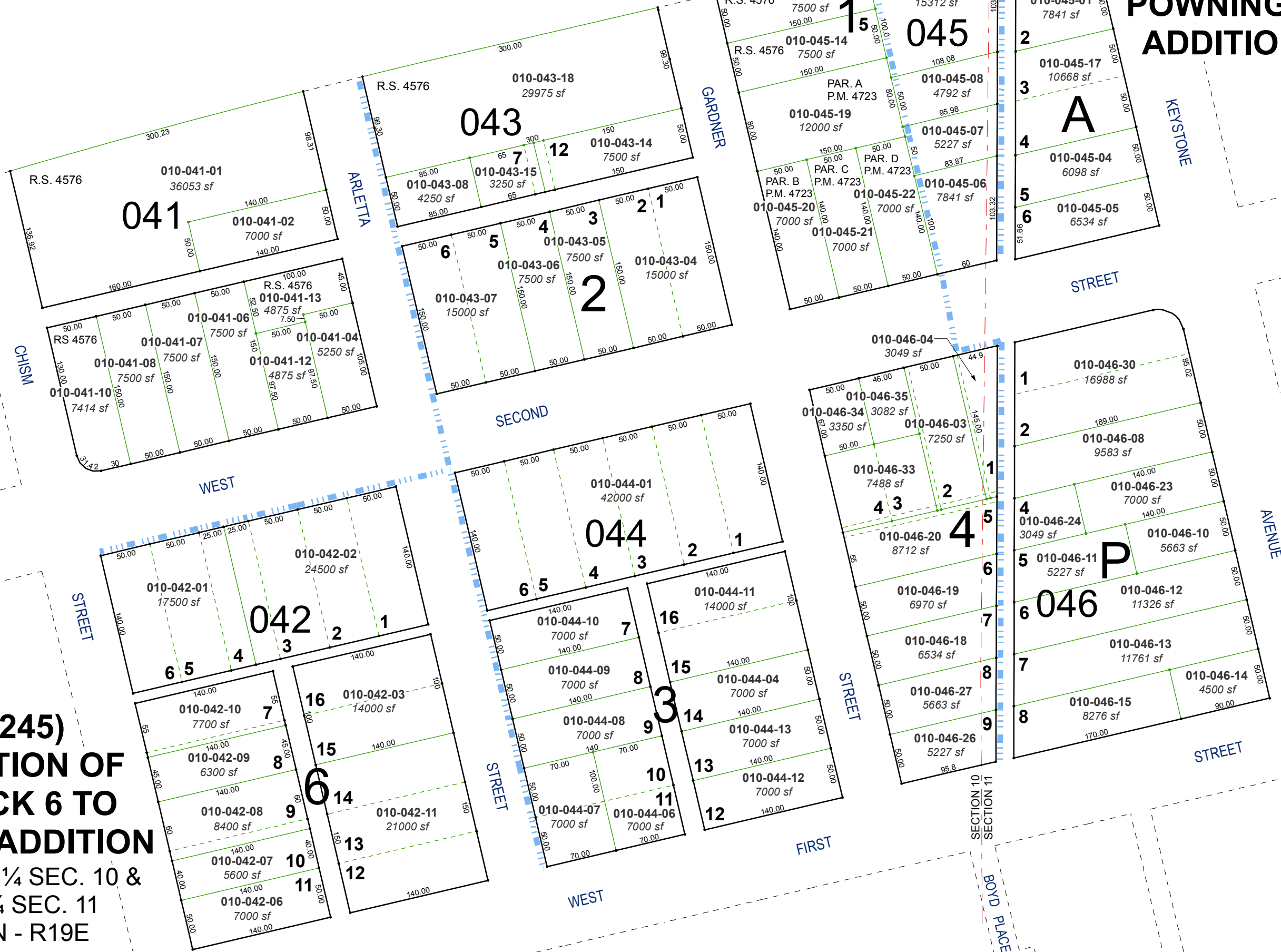


created by: TWT 12/20/2012

last updated: EMG 7/14/16

area previously shown on map(s)

NOTE: This map was prepared for the use of the Washoe County Assessor for assessment and illustrative purposes only. It does not represent a survey of the premises. No liability is assumed as to the sufficiency or accuracy of the data delineated hereon.



(#245) ADDITION OF BLOCK 6 TO CHISM ADDITION

POR. SE 1/4 SEC. 10 & SW 1/4 SEC. 11
T19N - R19E