

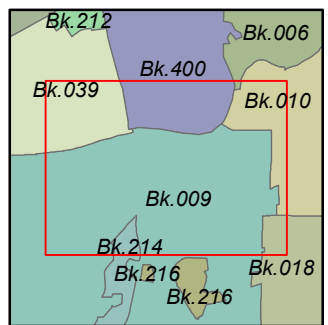
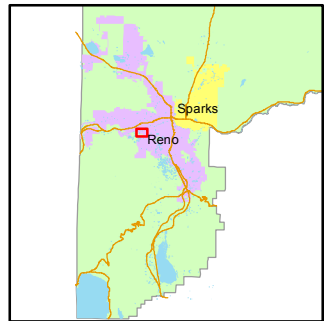
STATE OF NEVADA  
**WASHOE COUNTY**  
**ASSESSOR'S OFFICE**  
 Joshua G. Wilson, Assessor

1001 East Ninth Street  
 Building D  
 Reno, Nevada 89512  
 (775) 328-2231



Feet  
 0 250 500

1 inch = 500 feet



created by: CFB 10/21/2013

last updated: \_\_\_\_\_

NOTE: This map was prepared for the use of the Washoe County Assessor for assessment and illustrative purposes only. It does not represent a survey of the premises. No liability is assumed as to the sufficiency or accuracy of the data delineated herein.

T19N - R19E

BOOK 39

BOOK 400

BOOK 010

SEE INDEX  
 PAGE 01

SEE INDEX PAGE 01

17 16  
 20 21

16 15  
 21 22

