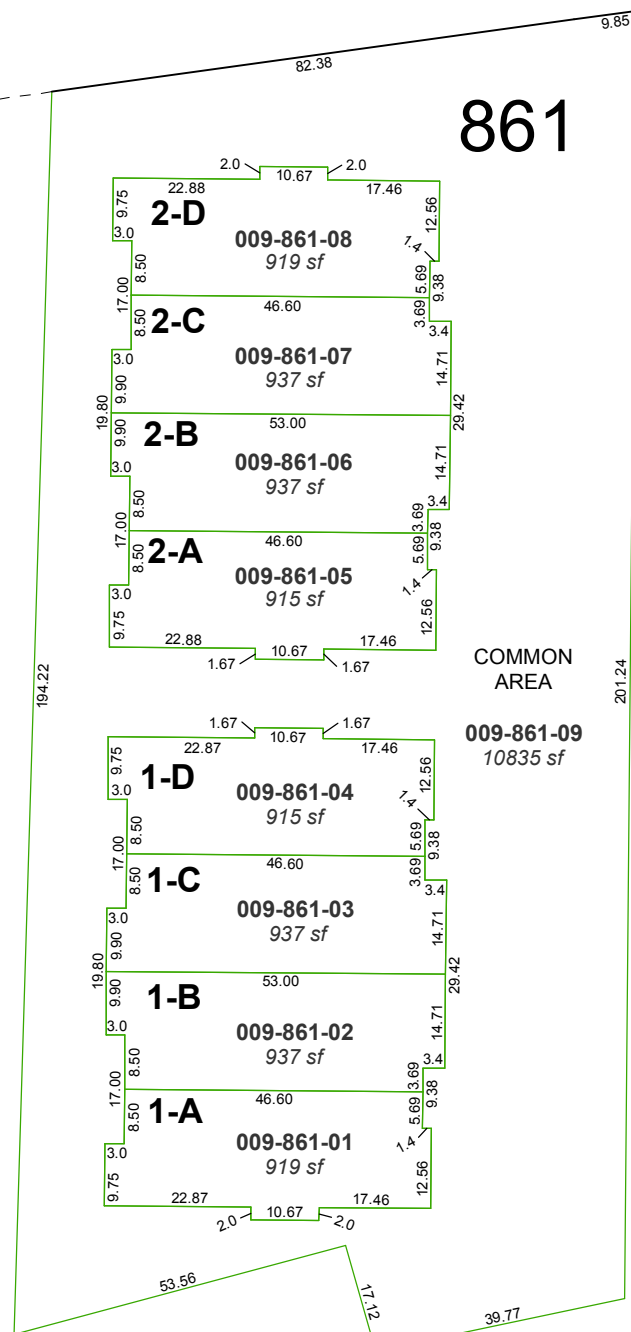


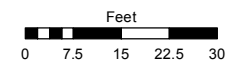
(#5342)
THE MAYBERRY LOFTS
 PORTION OF THE SW ¼ OF SECTION 16
 T19N - R19E

MAYBERRY DRIVE

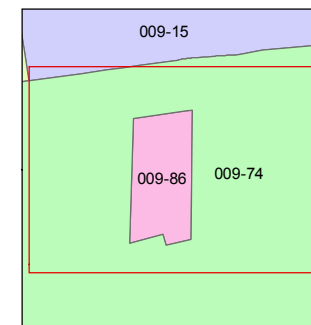
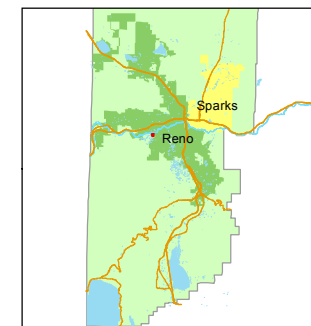


Assessor's Map Number
009-86

STATE OF NEVADA
WASHOE COUNTY
 ASSESSOR'S OFFICE
 1001 East Ninth Street, Building D
 Reno, Nevada 89512
 (775) 328-2231



1 inch = 30 feet



created by: JMO 09/17/2019

updated: _____

area previously shown on map(s):
009-74

NOTE: This map was prepared for the use of the Washoe County Assessor for assessment and illustrative purposes only. It does not represent a survey of the premises. No liability is assumed as to the sufficiency or accuracy of the data delineated hereon.

MCCARRAN BOULEVARD