

(#4057) MAYBERRY TOWNHOUSES

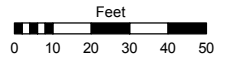
POR. OF THE SW 1/4 OF SEC. 16
T19N - R19E

Assessor's Map Number

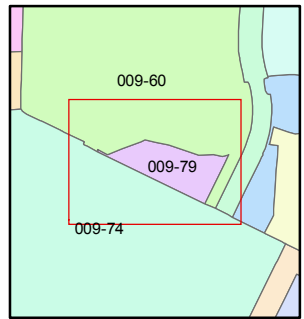
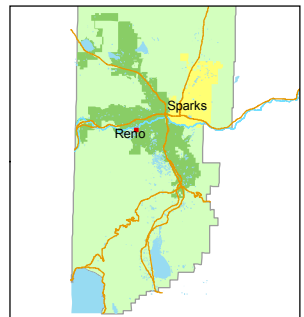
009-79

STATE OF NEVADA
WASHOE COUNTY
ASSESSOR'S OFFICE
Joshua G. Wilson, Assessor

1001 East Ninth Street
Building D
Reno, Nevada 89512
(775) 328-2231



1 inch = 50 feet



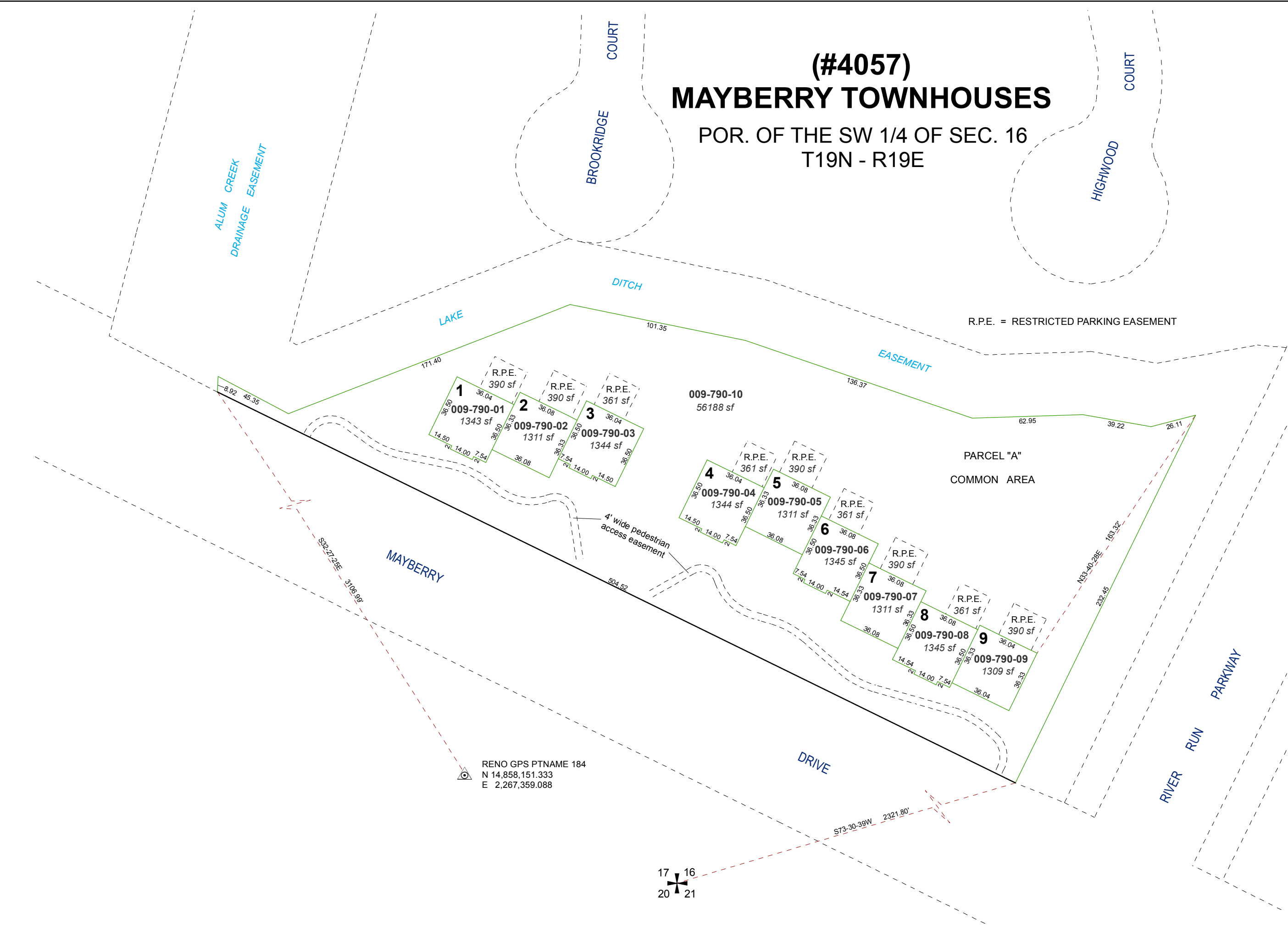
created by: TWT 12/14/2012

last updated: _____

area previously shown on map(s)

009-60

NOTE: This map was prepared for the use of the Washoe County Assessor for assessment and illustrative purposes only. It does not represent a survey of the premises. No liability is assumed as to the sufficiency or accuracy of the data delineated hereon.



17 16
20 21