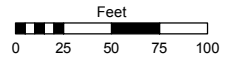


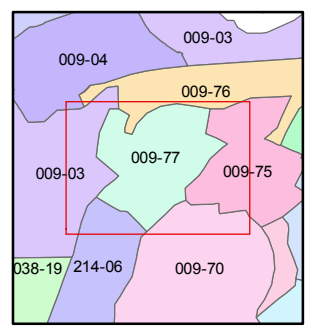
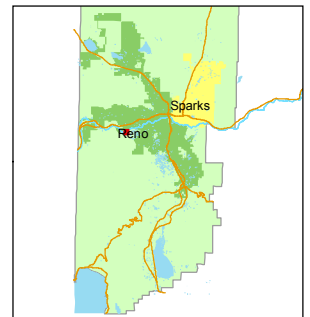
Assessor's Map Number
009-77

STATE OF NEVADA
WASHOE COUNTY
ASSESSOR'S OFFICE
Joshua G. Wilson, Assessor

1001 East Ninth Street
Building D
Reno, Nevada 89512
(775) 328-2231



1 inch = 100 feet



created by: TWT 12/13/2012

last updated: _____

area previously shown on map(s)
009-03

NOTE: This map was prepared for the use of the Washoe County Assessor for assessment and illustrative purposes only. It does not represent a survey of the premises. No liability is assumed as to the sufficiency or accuracy of the data delineated hereon.

(#3057)
JUNIPER RIDGE SUBDIVISION
UNIT 3

PORTION OF THE NE 1/4 OF SECTION 19
T19N - R19E

NOTE: ADDITIONAL COMMON AREAS PARCELED ON PAGE 76