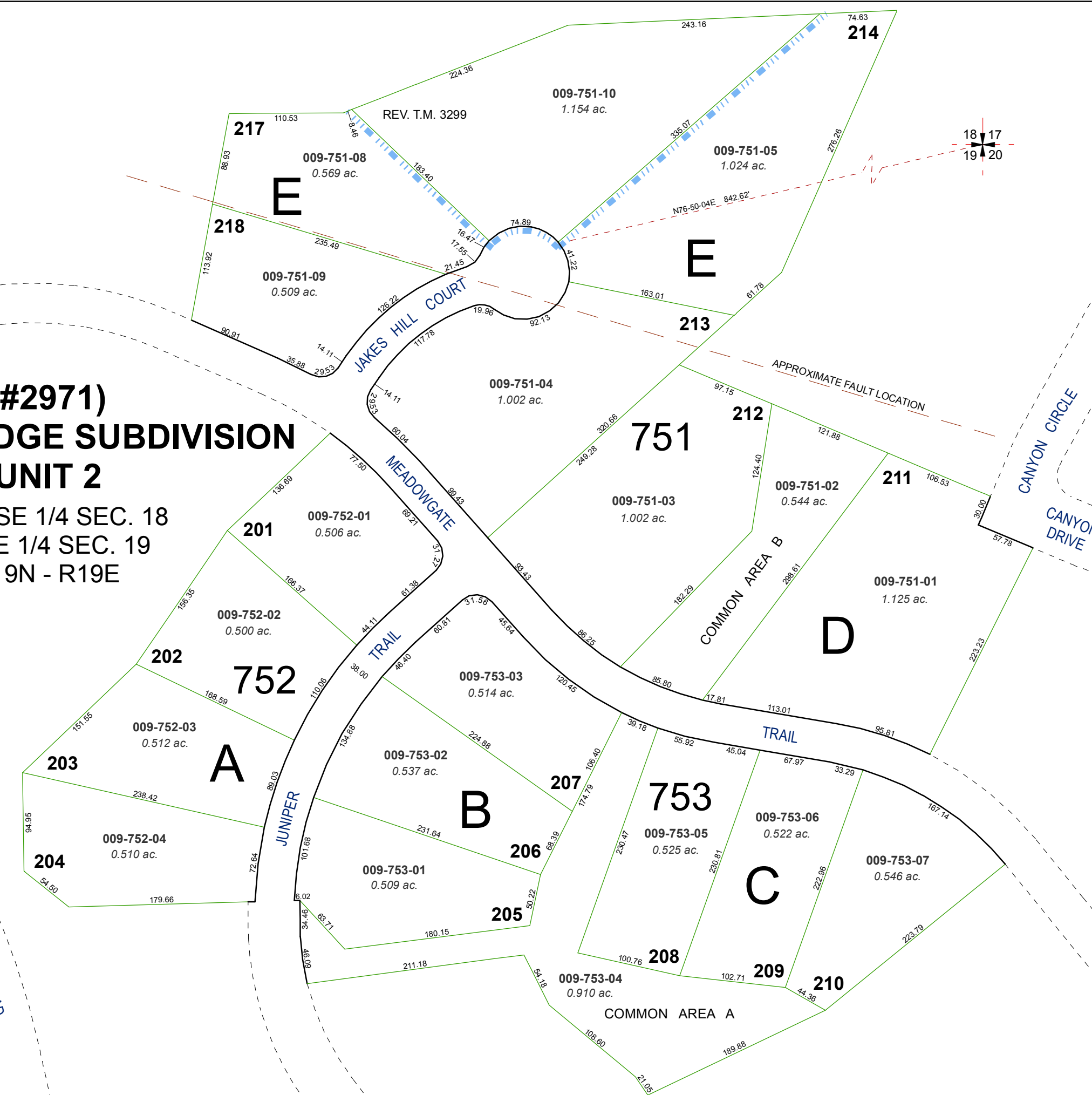


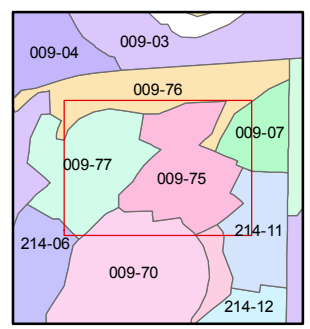
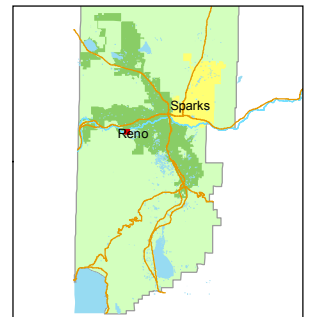
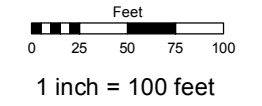
**(#2971)  
JUNIPER RIDGE SUBDIVISION  
UNIT 2**  
POR. SE 1/4 SEC. 18  
& NE 1/4 SEC. 19  
T19N - R19E



Assessor's Map Number  
**009-75**

STATE OF NEVADA  
**WASHOE COUNTY**  
ASSESSOR'S OFFICE  
Joshua G. Wilson, Assessor

1001 East Ninth Street  
Building D  
Reno, Nevada 89512  
(775) 328-2231



created by: TWT 12/13/2012  
last updated: \_\_\_\_\_  
area previously shown on map(s)  
009-03

NOTE: This map was prepared for the use of the Washoe County Assessor for assessment and illustrative purposes only. It does not represent a survey of the premises. No liability is assumed as to the sufficiency or accuracy of the data delineated hereon.