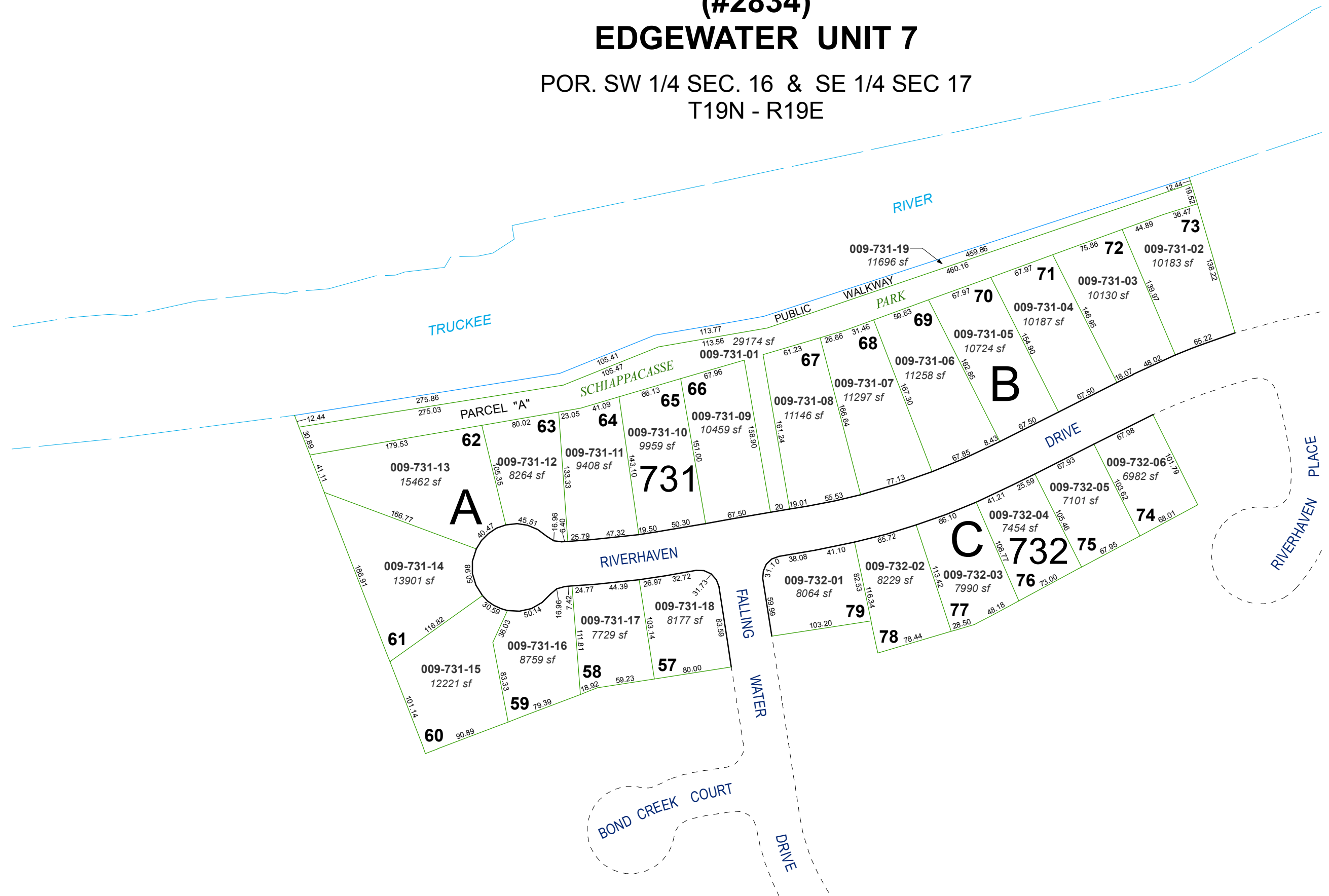


(#2834) EDGEWATER UNIT 7

POR. SW 1/4 SEC. 16 & SE 1/4 SEC 17
T19N - R19E

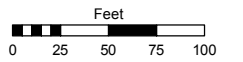


Assessor's Map Number

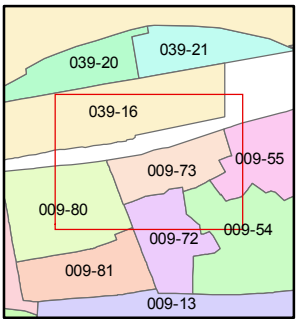
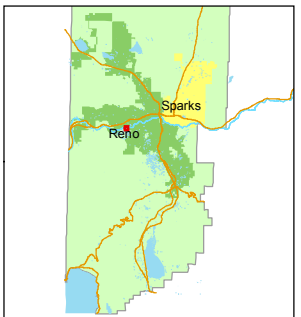
009-73

STATE OF NEVADA
WASHOE COUNTY
ASSESSOR'S OFFICE
Joshua G. Wilson, Assessor

1001 East Ninth Street
Building D
Reno, Nevada 89512
(775) 328-2231



1 inch = 100 feet



created by: TWT 12/12/2012

last updated: _____

area previously shown on map(s)

009-15

NOTE: This map was prepared for the use of the Washoe County Assessor for assessment and illustrative purposes only. It does not represent a survey of the premises. No liability is assumed as to the sufficiency or accuracy of the data delineated hereon.