

Assessor's Map Number

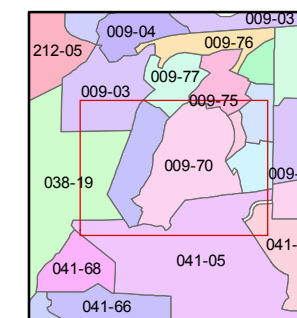
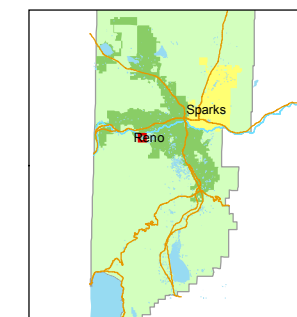
**009-70**

STATE OF NEVADA  
**WASHOE COUNTY**  
ASSESSOR'S OFFICE  
Joshua G. Wilson, Assessor

1001 East Ninth Street  
Building D  
Reno, Nevada 89512  
(775) 328-2231



1 inch = 200 feet



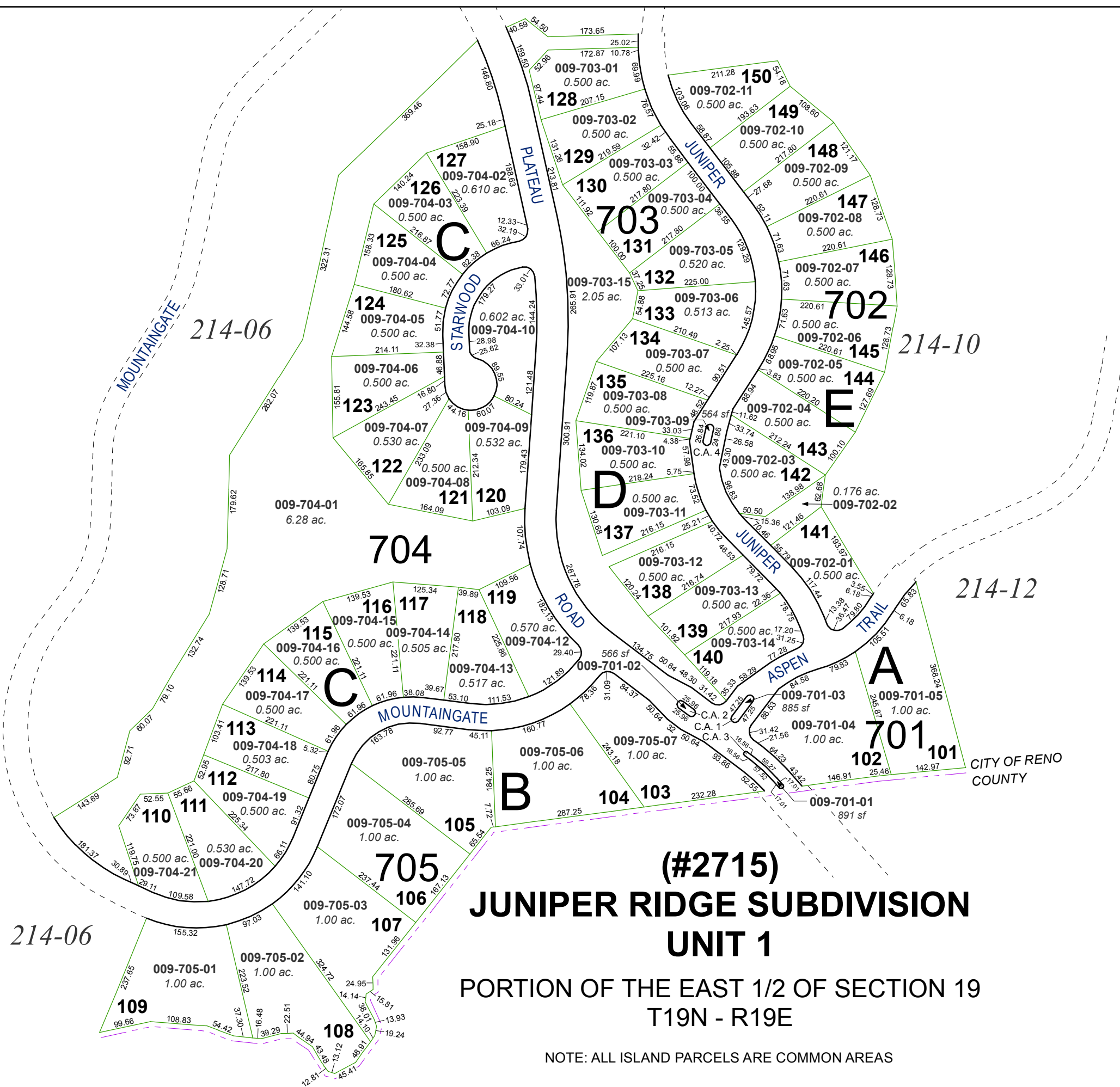
created by: TWT 12/11/2012

last updated: \_\_\_\_\_

area previously shown on map(s)

009-03

NOTE: This map was prepared for the use of the Washoe County Assessor for assessment and illustrative purposes only. It does not represent a survey of the premises. No liability is assumed as to the sufficiency or accuracy of the data delineated hereon.



**(#2715)  
JUNIPER RIDGE SUBDIVISION  
UNIT 1**  
PORTION OF THE EAST 1/2 OF SECTION 19  
T19N - R19E

NOTE: ALL ISLAND PARCELS ARE COMMON AREAS