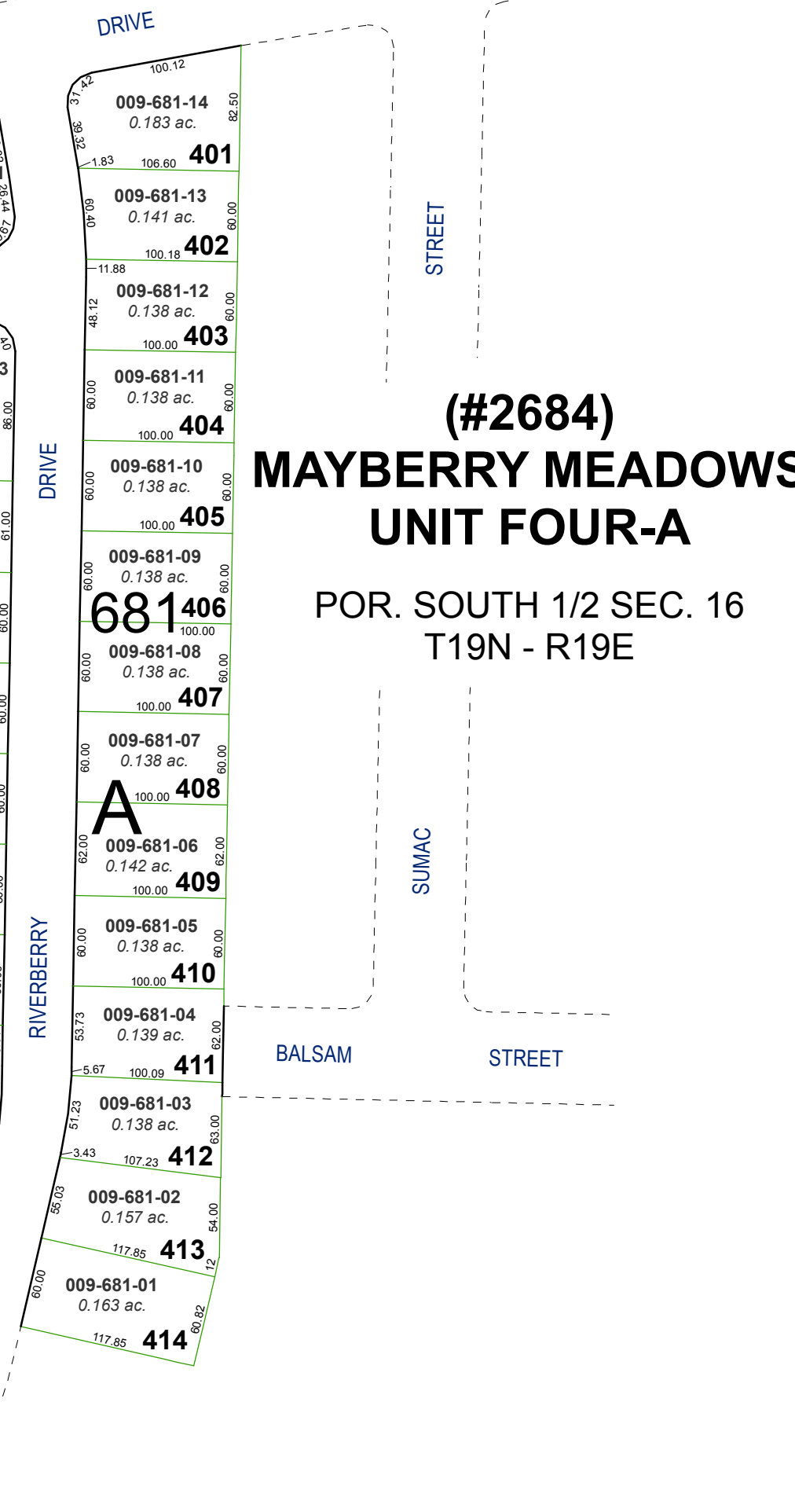
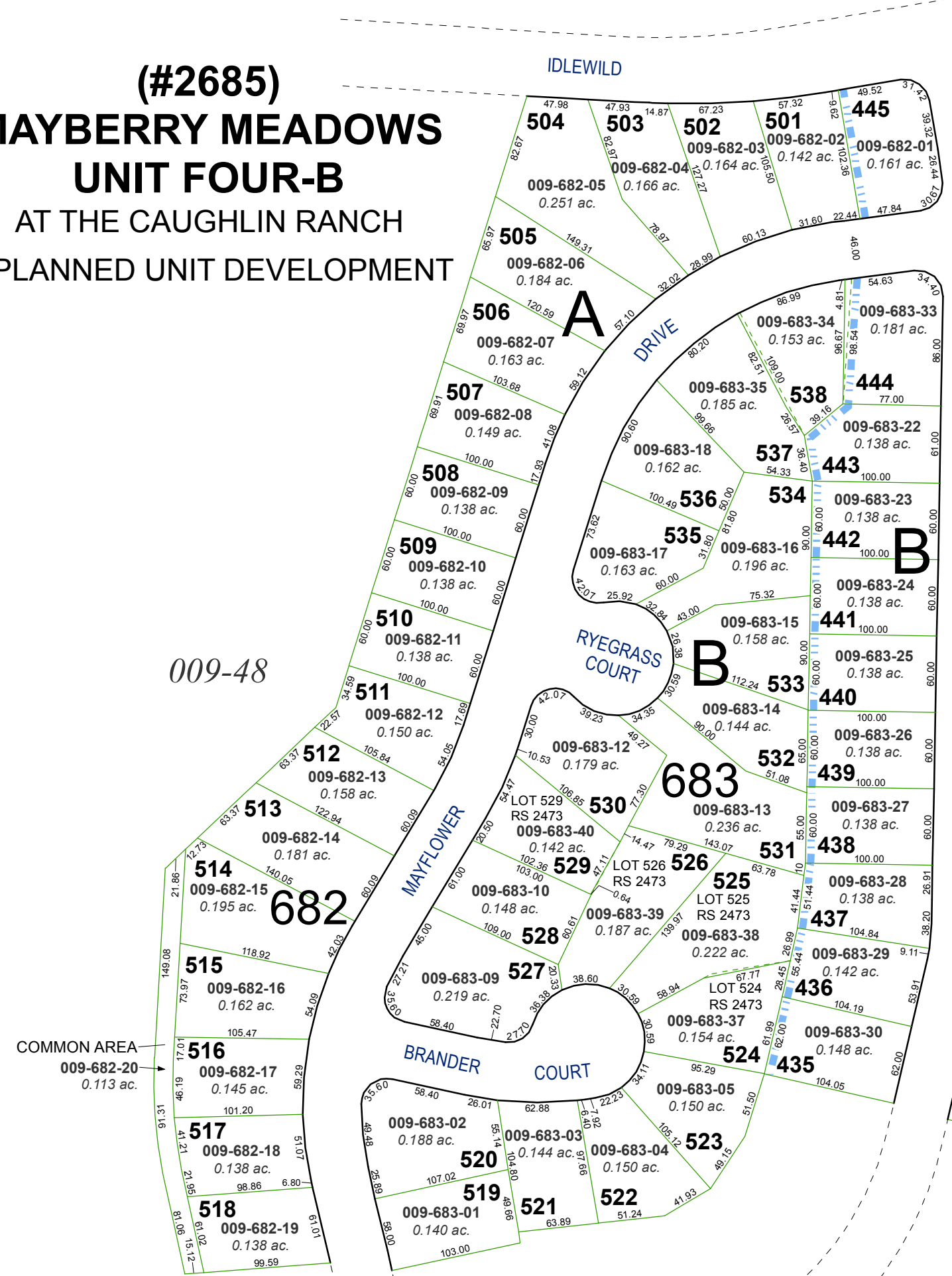


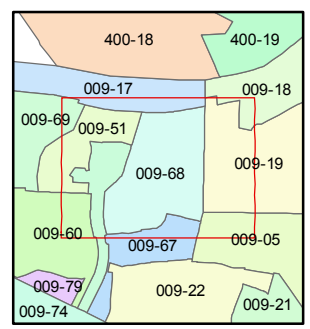
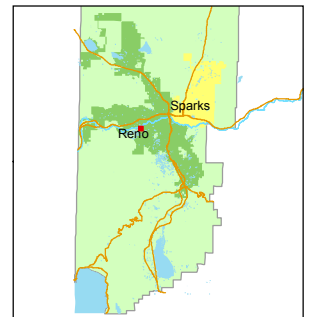
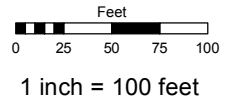
**(#2685)  
MAYBERRY MEADOWS  
UNIT FOUR-B  
AT THE CAUGHLIN RANCH  
A PLANNED UNIT DEVELOPMENT**



**(#2684)  
MAYBERRY MEADOWS  
UNIT FOUR-A  
POR. SOUTH 1/2 SEC. 16  
T19N - R19E**

Assessor's Map Number  
**009-68**

STATE OF NEVADA  
**WASHOE COUNTY**  
ASSESSOR'S OFFICE  
Joshua G. Wilson, Assessor  
1001 East Ninth Street  
Building D  
Reno, Nevada 89512  
(775) 328-2231



created by: TWT 12/6/2012  
last updated: \_\_\_\_\_  
area previously shown on map(s)  
009-17

NOTE: This map was prepared for the use of the Washoe County Assessor for assessment and illustrative purposes only. It does not represent a survey of the premises. No liability is assumed as to the sufficiency or accuracy of the data delineated hereon.