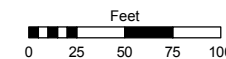


Assessor's Map Number

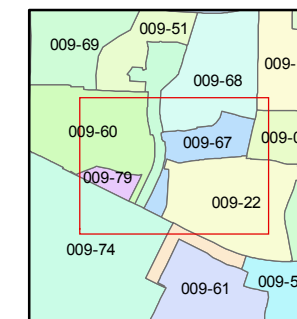
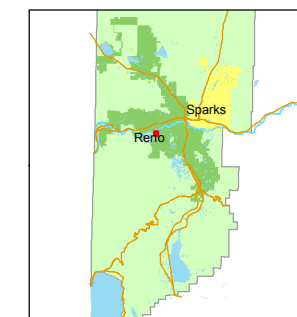
009-67

STATE OF NEVADA
WASHOE COUNTY
ASSESSOR'S OFFICE
Joshua G. Wilson, Assessor

1001 East Ninth Street
Building D
Reno, Nevada 89512
(775) 328-2231



1 inch = 100 feet



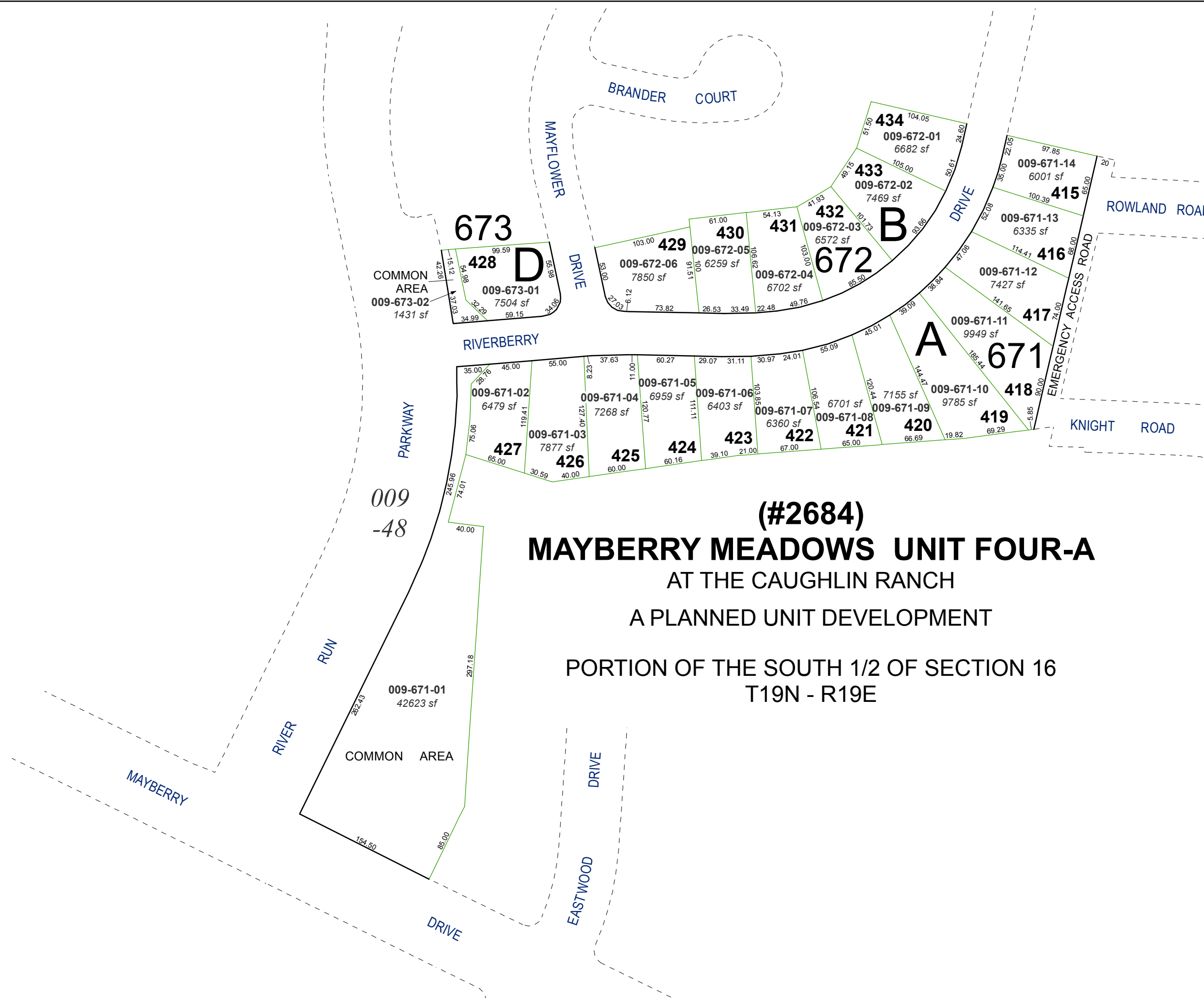
created by: TWT 12/6/2012

last updated: _____

area previously shown on map(s)

009-17

NOTE: This map was prepared for the use of the Washoe County Assessor for assessment and illustrative purposes only. It does not represent a survey of the premises. No liability is assumed as to the sufficiency or accuracy of the data delineated herein.



(#2684)
MAYBERRY MEADOWS UNIT FOUR-A
AT THE CAUGHLIN RANCH
A PLANNED UNIT DEVELOPMENT

PORTRION OF THE SOUTH 1/2 OF SECTION 16
T19N - R19E

673
428 D
009-673-01
7504 sf
COMMON AREA
009-673-02
1431 sf

009-671-01
42623 sf
COMMON AREA