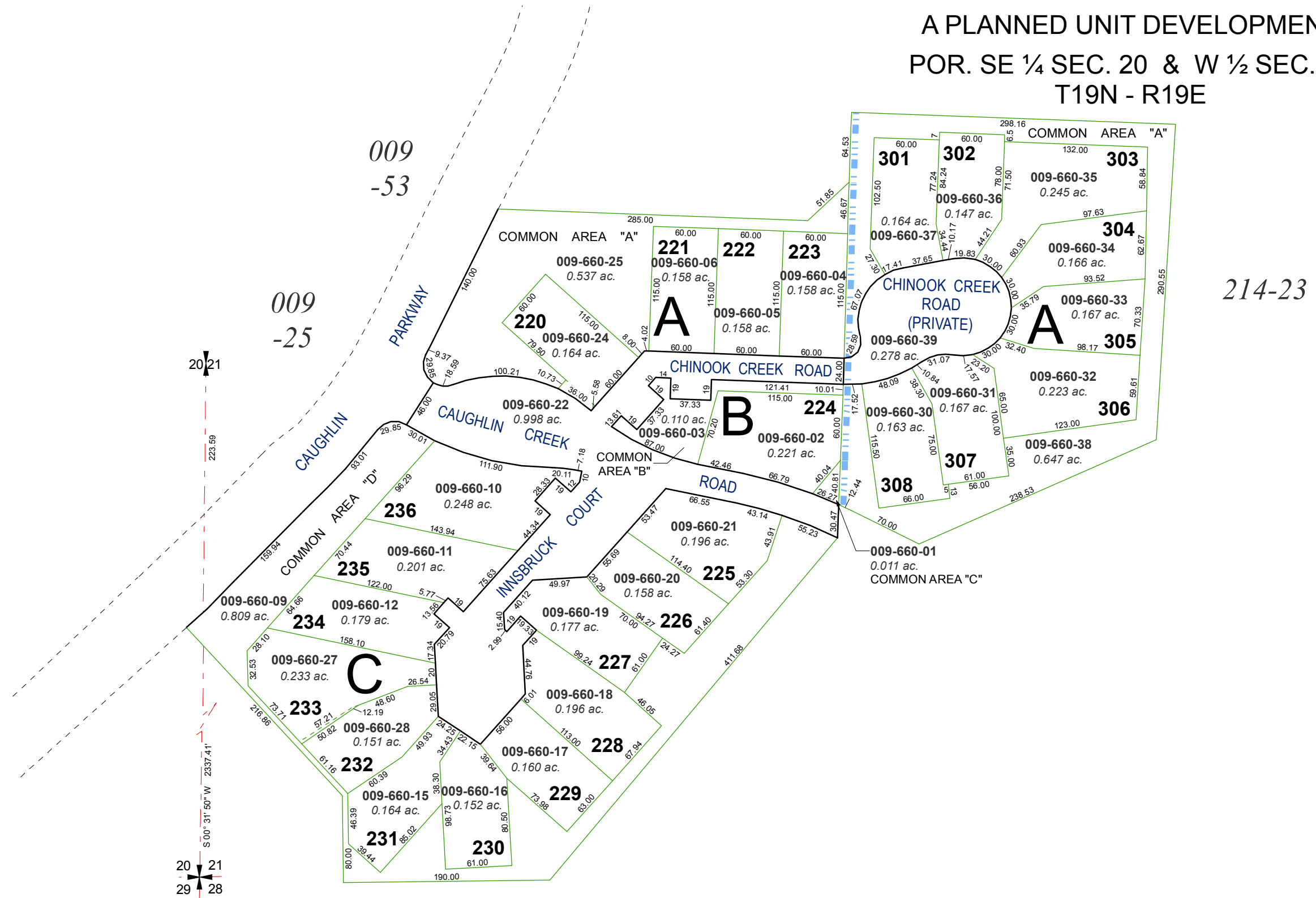


**(#2795)
CAUGHLIN CREEK UNIT THREE**

A PLANNED UNIT DEVELOPMENT
POR. SE ¼ SEC. 20 & W ½ SEC. 21
T19N - R19E



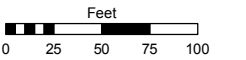
**(#2632)
CAUGHLIN CREEK UNIT TWO-B**
A PLANNED UNIT DEVELOPMENT

Assessor's Map Number

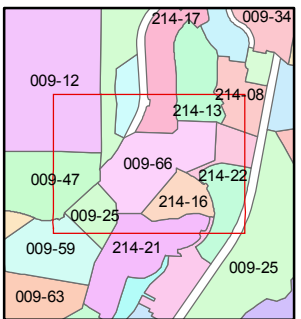
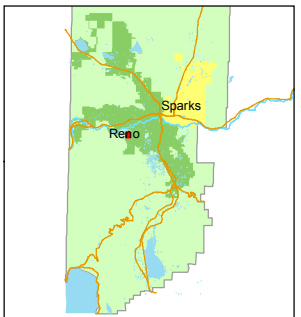
009-66

STATE OF NEVADA
WASHOE COUNTY
ASSESSOR'S OFFICE
Joshua G. Wilson, Assessor

1001 East Ninth Street
Building D
Reno, Nevada 89512
(775) 328-2231



1 inch = 100 feet



created by: TWT 12/5/2012

last updated: _____

area previously shown on map(s) _____

NOTE: This map was prepared for the use of the Washoe County Assessor for assessment and illustrative purposes only. It does not represent a survey of the premises. No liability is assumed as to the sufficiency or accuracy of the data delineated herein.