

# (#2511) MAYBERRY MEADOWS UNIT THREE

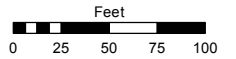
PORTION OF THE NORTH 1/2 OF SECTION 21  
T19N - R19E

Assessor's Map Number

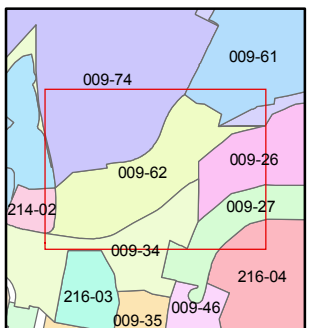
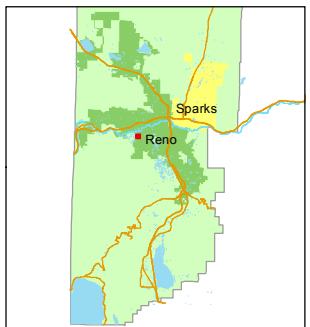
**009-62**

STATE OF NEVADA  
**WASHOE COUNTY**  
ASSESSOR'S OFFICE  
Michael E. Clark, Assessor

1001 East Ninth Street  
Building D  
Reno, Nevada 89512  
(775) 328-2231



1 inch = 100 feet

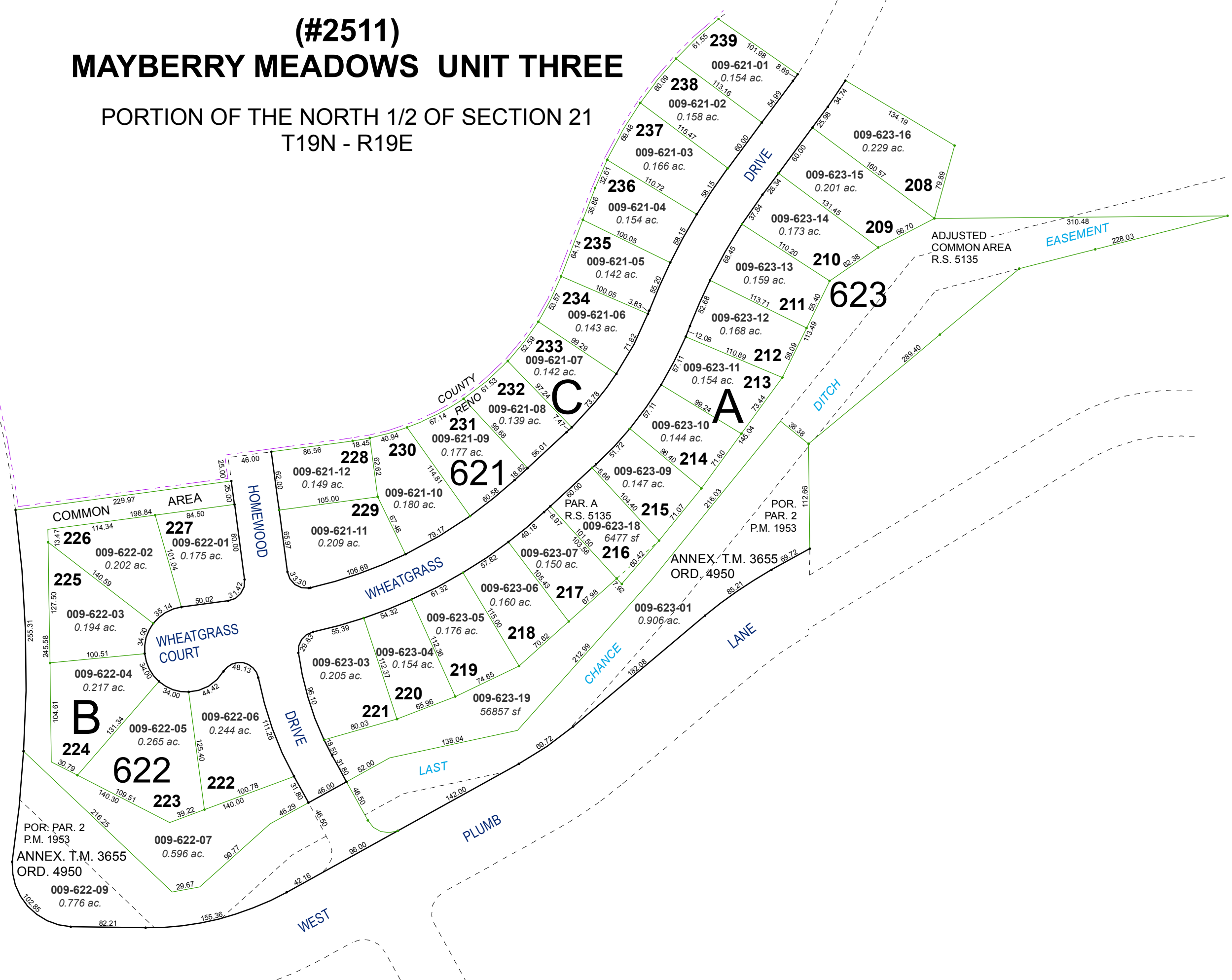


created by: TWT 12/3/2012

last updated: JKF 4/20/18

area previously shown on map(s)

NOTE: This map was prepared for the use of the Washoe County Assessor for assessment and illustrative purposes only. It does not represent a survey of the premises. No liability is assumed as to the sufficiency or accuracy of the data delineated hereon.



214  
-02

BOULEVARD

McCARRAN

POR. PAR. 2  
P.M. 1953  
ANNEX. T.M. 3655  
ORD. 4950

009-622-09  
0.776 ac.

009-622-07  
0.596 ac.

009-622-05  
0.265 ac.

009-622-06  
0.244 ac.

009-622-04  
0.217 ac.

009-622-03  
0.194 ac.

009-622-02  
0.202 ac.

009-622-01  
0.175 ac.

WEST

PLUMB

LAST

CHANCE

LANE

ANNEX. T.M. 3655  
ORD. 4950

009-623-18  
6477 sf

009-623-09  
0.147 ac.

WHEATGRASS

HOMEROOD

WHEATGRASS  
COURT

COUNTY

RENO

DRIVE

DITCH

ADJUSTED  
COMMON AREA  
R.S. 5135

EASEMENT