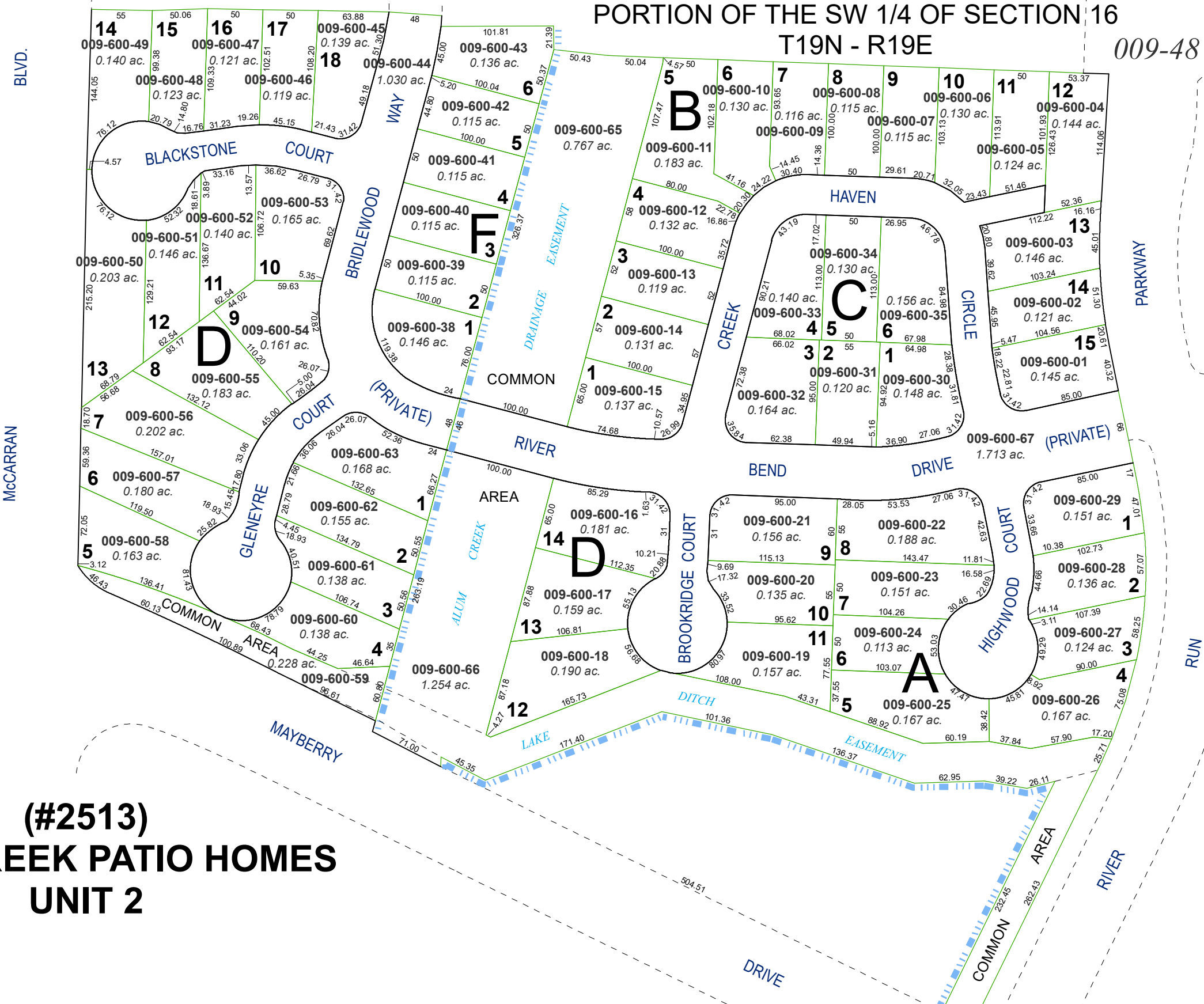


**(#2420)
ALUM CREEK PATIO HOMES
UNIT 1**

PORTION OF THE SW 1/4 OF SECTION 16
T19N - R19E



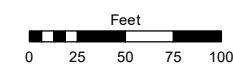
**(#2513)
ALUM CREEK PATIO HOMES
UNIT 2**

Assessor's Map Number

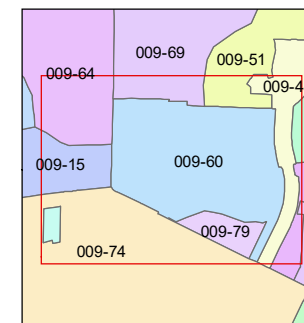
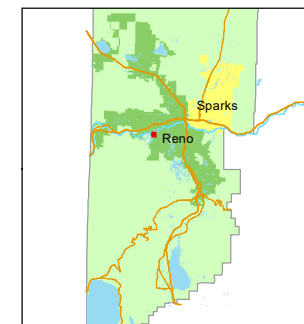
009-60

STATE OF NEVADA
WASHOE COUNTY
ASSESSOR'S OFFICE

1001 East Ninth Street, Building D
Reno, Nevada 89512
(775) 328-2231



1 inch = 100 feet



created by: TWT 11/30/2012

updated: JRA 5/20/2021

area previously shown on map(s):

NOTE: This map was prepared for the use of the Washoe County Assessor for assessment and illustrative purposes only. It does not represent a survey of the premises. No liability is assumed as to the sufficiency or accuracy of the data delineated hereon.