

Assessor's Map Number

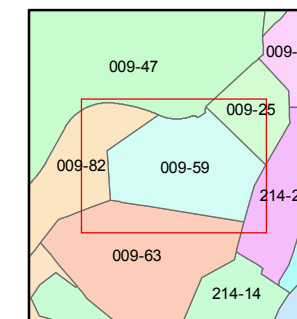
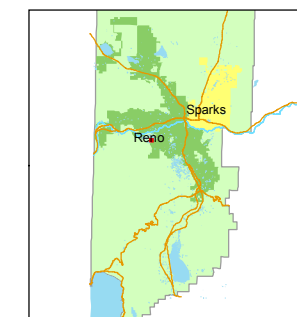
009-59

STATE OF NEVADA
WASHOE COUNTY
ASSESSOR'S OFFICE
Joshua G. Wilson, Assessor

1001 East Ninth Street
Building D
Reno, Nevada 89512
(775) 328-2231



1 inch = 60 feet

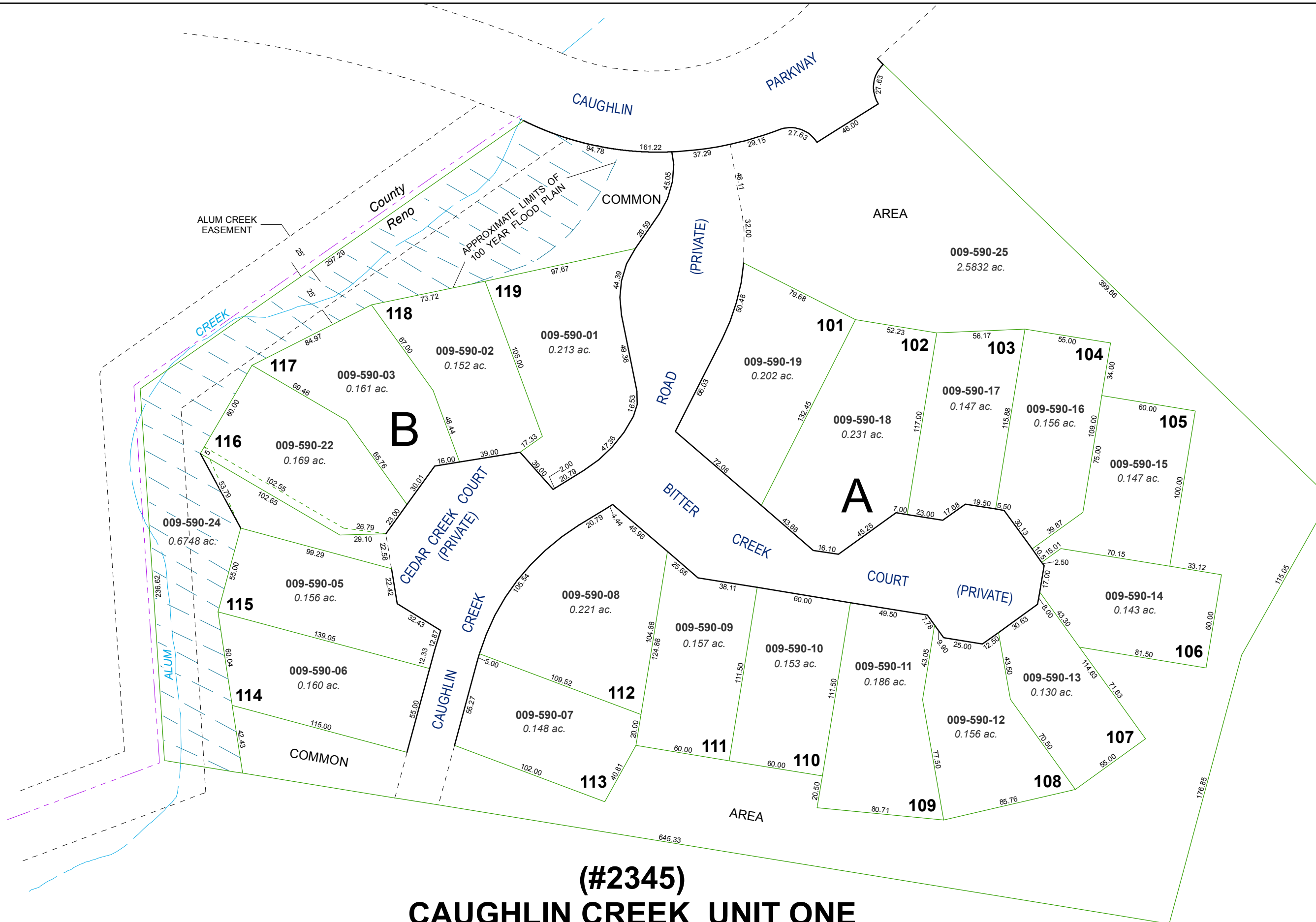


created by: TWT 11/29/2012

last updated: _____

area previously shown on map(s) _____

NOTE: This map was prepared for the use of the Washoe County Assessor for assessment and illustrative purposes only. It does not represent a survey of the premises. No liability is assumed as to the sufficiency or accuracy of the data delineated hereon.



(#2345)
CAUGHLIN CREEK UNIT ONE
PORTION OF THE SE 1/4 OF SECTION 20, T19N - R19E