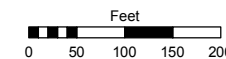


Assessor's Map Number

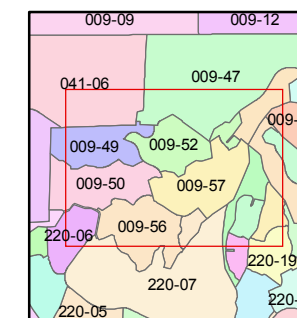
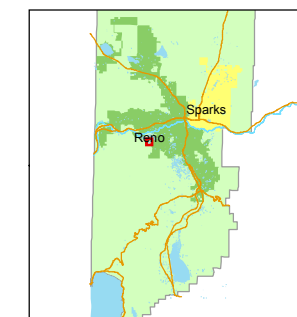
009-57

STATE OF NEVADA
WASHOE COUNTY
ASSESSOR'S OFFICE
Joshua G. Wilson, Assessor

1001 East Ninth Street
Building D
Reno, Nevada 89512
(775) 328-2231



1 inch = 200 feet



created by: TWT 11/28/2012

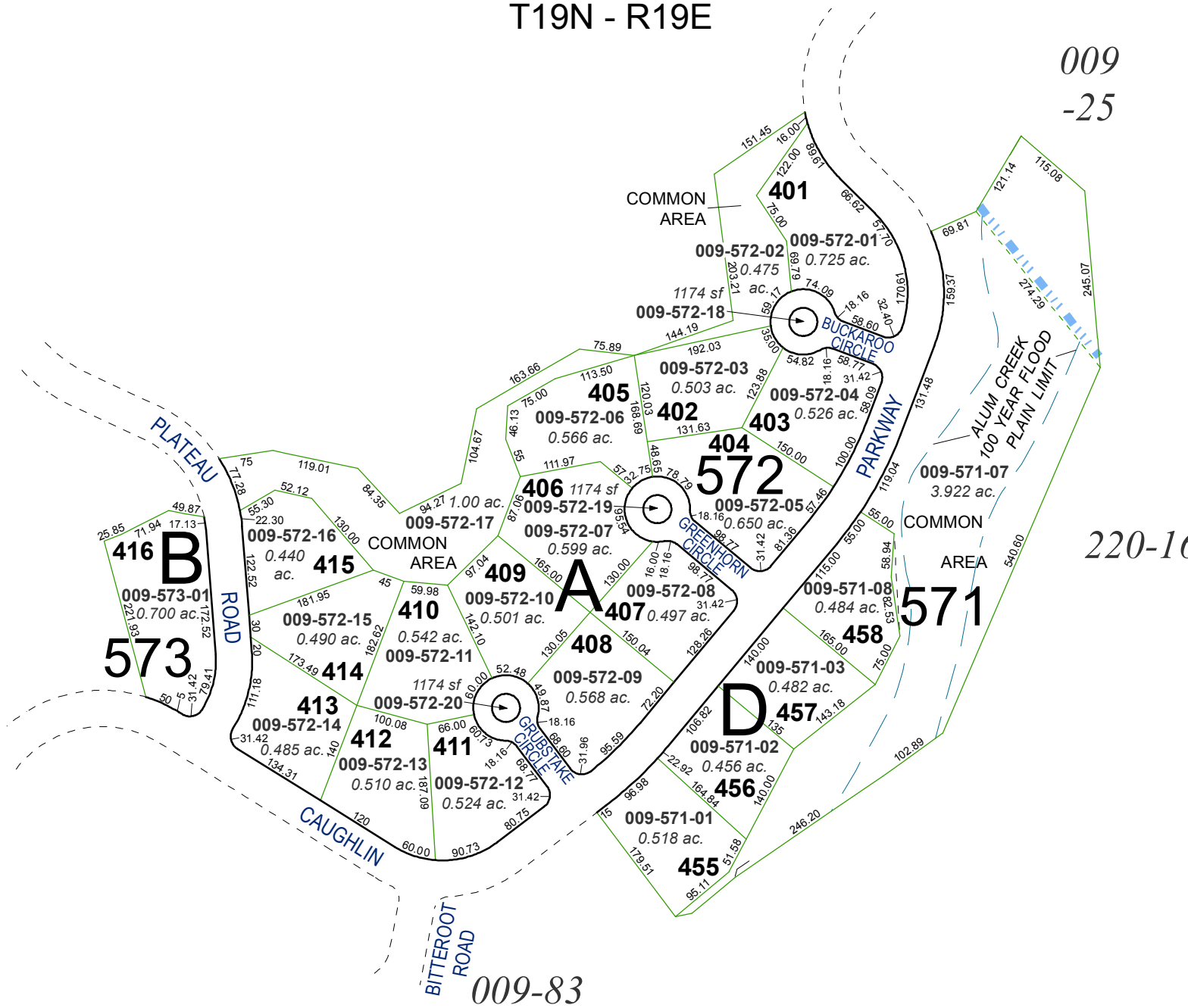
last updated: _____

area previously shown on map(s) _____

NOTE: This map was prepared for the use of the Washoe County Assessor for assessment and illustrative purposes only. It does not represent a survey of the premises. No liability is assumed as to the sufficiency or accuracy of the data delineated hereon.

(#2335) JUNIPER TRAILS UNIT #4

PORTION OF THE SOUTH 1/2 OF SECTION 20 T19N - R19E



009
-25

220-16

009-83