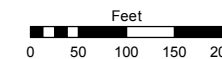


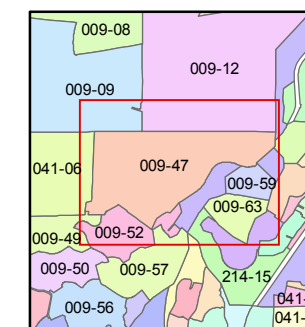
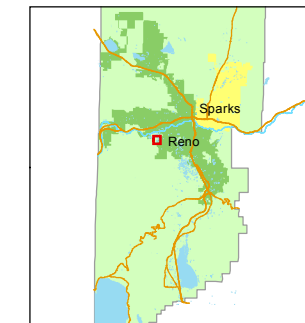
(#2184) JUNIPER TRAILS - UNIT ONE PORTION OF THE SOUTH 1/2 OF SECTION 20 T19N - R19E

STATE OF NEVADA
WASHOE COUNTY
ASSESSOR'S OFFICE
Michael E. Clark, Assessor

1001 East Ninth Street
Building D
Reno, Nevada 89512
(775) 328-2231



1 inch = 200 feet

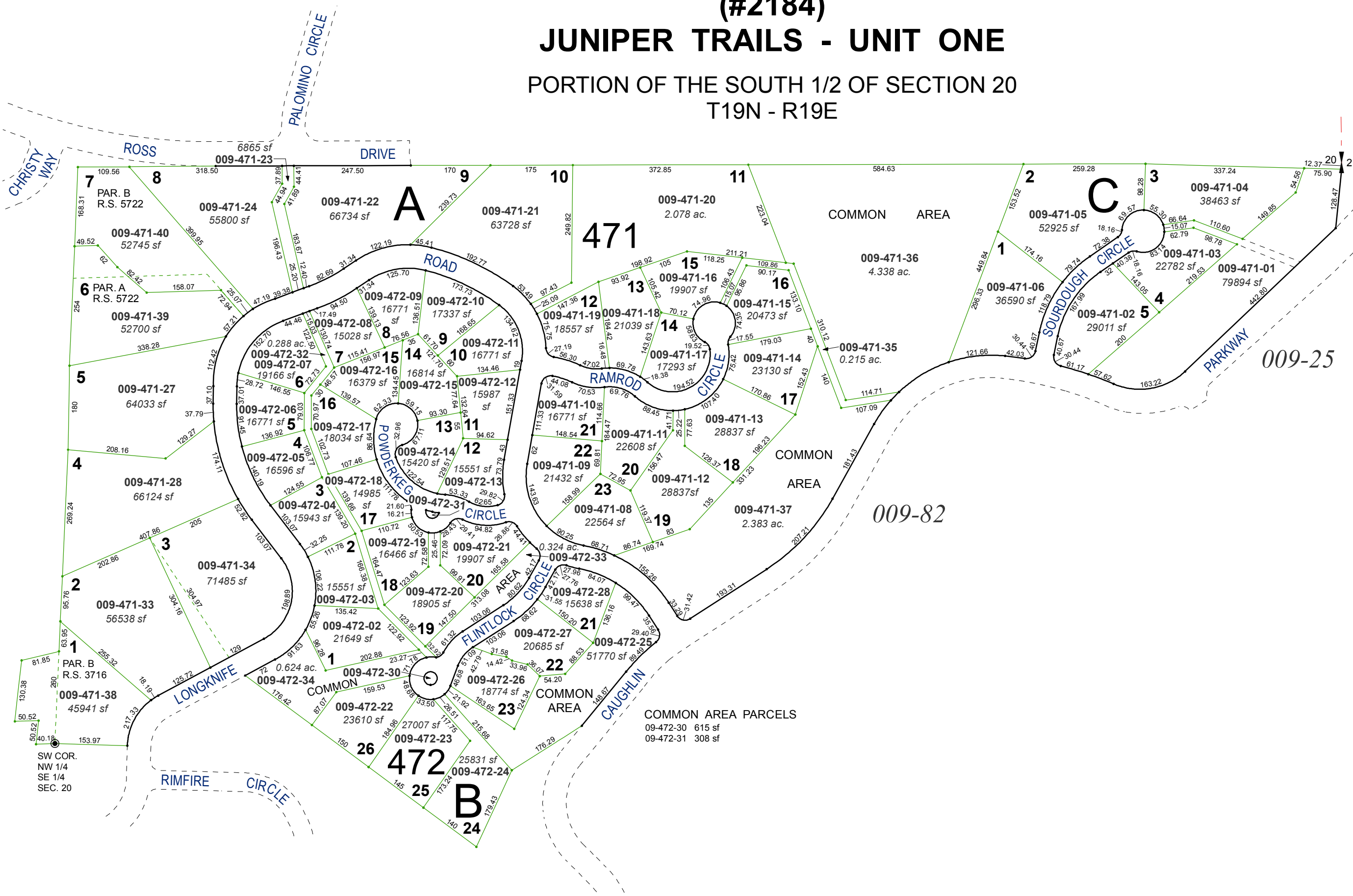


created by: TWT 11/21/2012

last updated: EMG 4/11/16

area previously shown on map(s)

NOTE: This map was prepared for the use of the Washoe County Assessor for assessment and illustrative purposes only. It does not represent a survey of the premises. No liability is assumed as to the sufficiency or accuracy of the data delineated hereon.



COMMON AREA PARCELS
09-472-30 615 sf
09-472-31 308 sf

SW COR.
NW 1/4
SE 1/4
SEC. 20