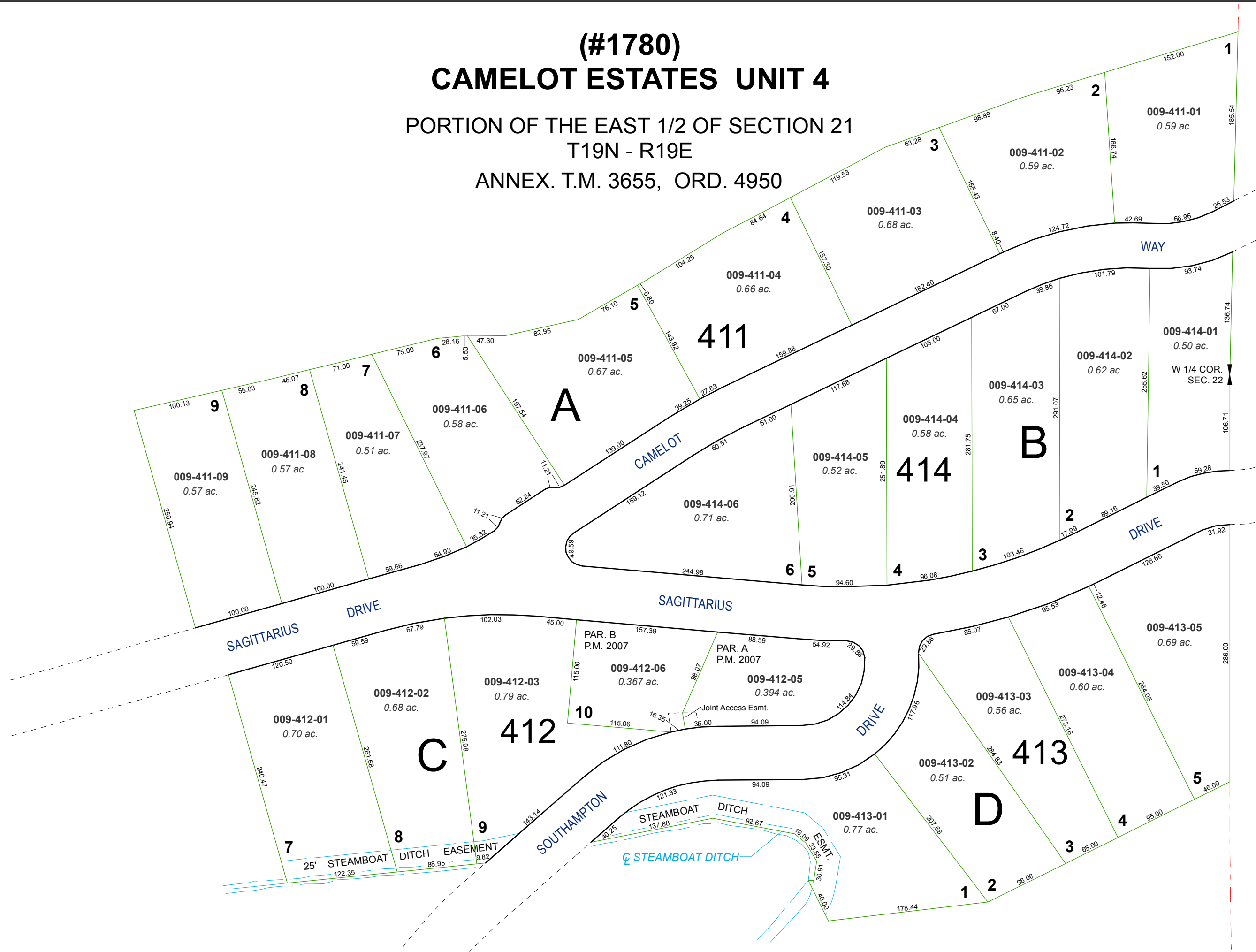


(#1780) CAMELOT ESTATES UNIT 4

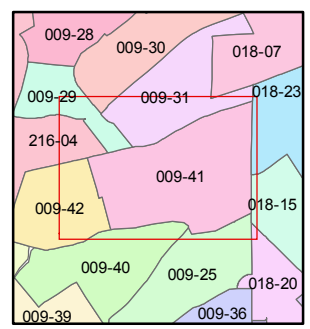
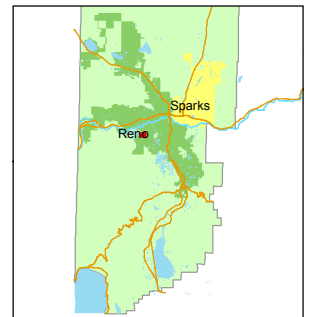
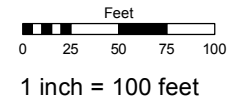
PORTION OF THE EAST 1/2 OF SECTION 21
T19N - R19E
ANNEX. T.M. 3655, ORD. 4950



Assessor's Map Number
009-41

STATE OF NEVADA
WASHOE COUNTY
ASSESSOR'S OFFICE
Joshua G. Wilson, Assessor

1001 East Ninth Street
Building D
Reno, Nevada 89512
(775) 328-2231



created by: TWT 11/16/2012
last updated: _____
area previously shown on map(s) _____

NOTE: This map was prepared for the use of the Washoe County Assessor for assessment and illustrative purposes only. It does not represent a survey of the premises. No liability is assumed as to the sufficiency or accuracy of the data delineated hereon.