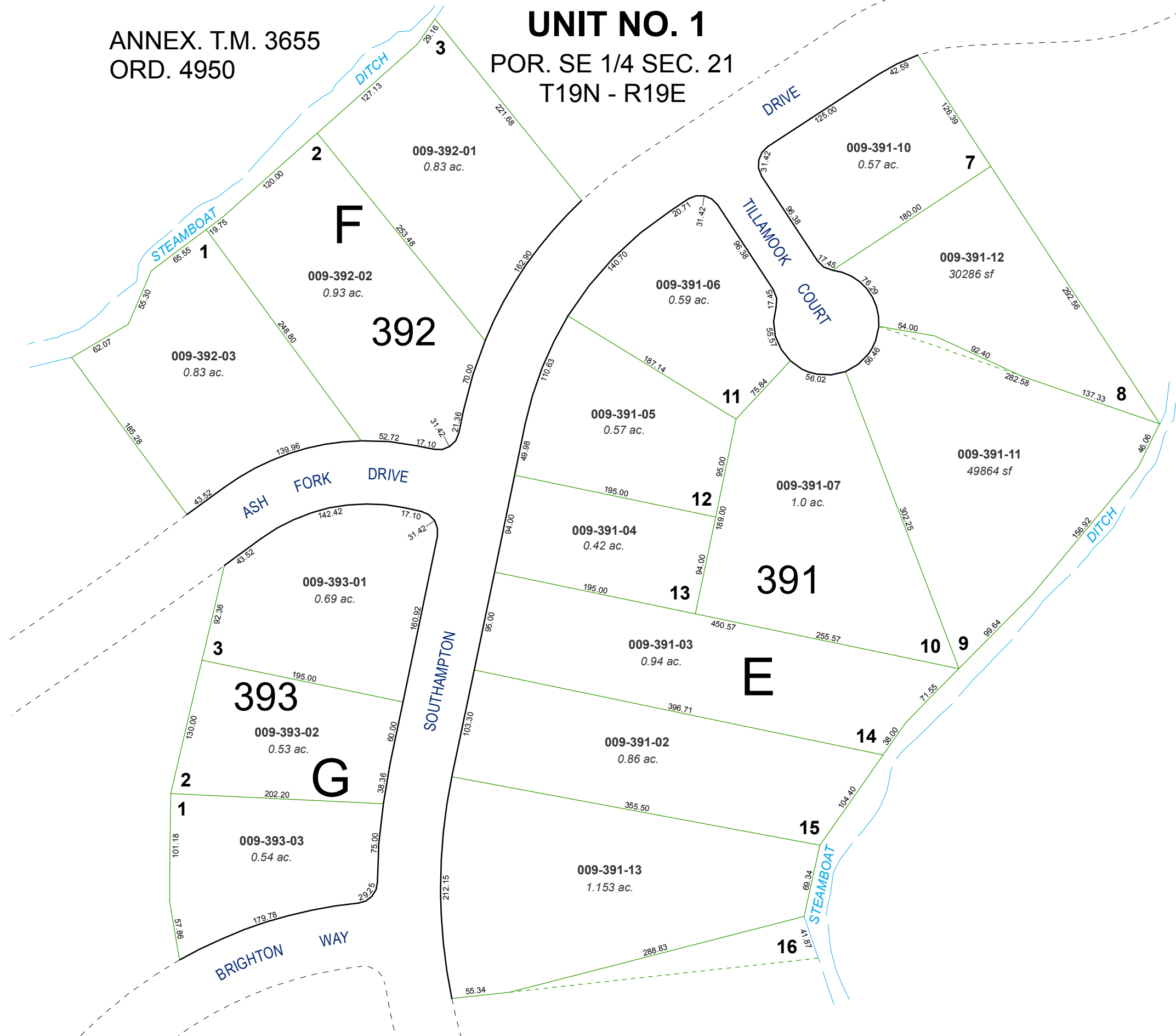


(#1745)
SOUTHAMPTON ESTATES
UNIT NO. 1

ANNEX. T.M. 3655
 ORD. 4950

POR. SE 1/4 SEC. 21
 T19N - R19E

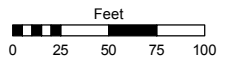


Assessor's Map Number

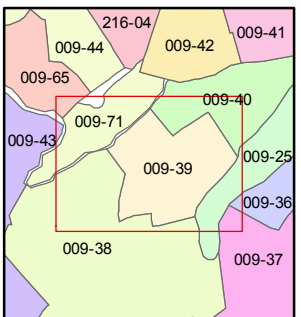
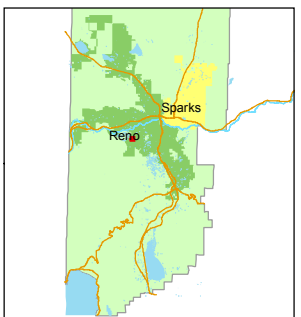
009-39

STATE OF NEVADA
WASHOE COUNTY
ASSESSOR'S OFFICE
 Joshua G. Wilson, Assessor

1001 East Ninth Street
 Building D
 Reno, Nevada 89512
 (775) 328-2231



1 inch = 100 feet



created by: TWT 11/16/2012

last updated: _____

area previously shown on map(s) _____

NOTE: This map was prepared for the use of the Washoe County Assessor for assessment and illustrative purposes only. It does not represent a survey of the premises. No liability is assumed as to the sufficiency or accuracy of the data delineated herein.