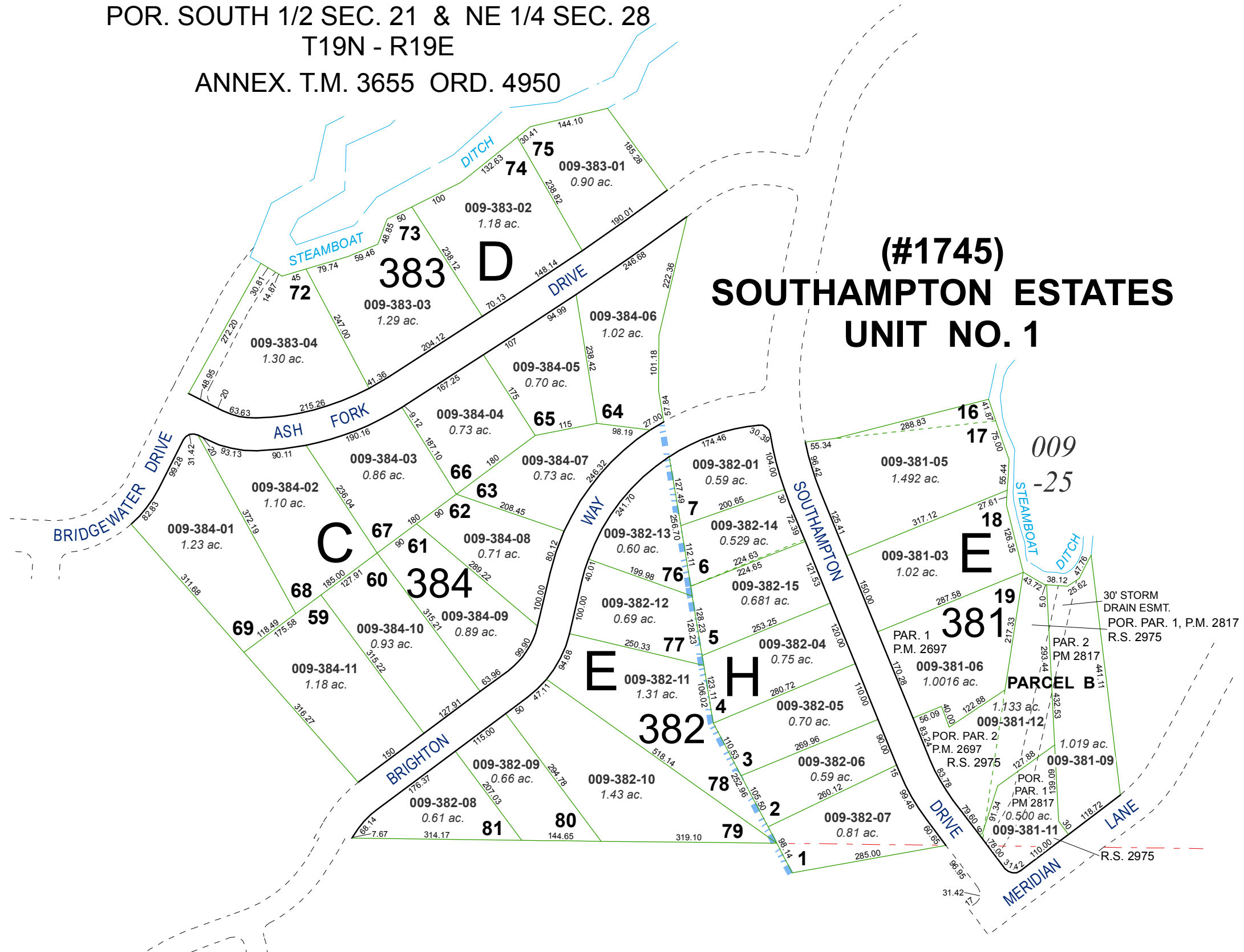


**(#1870)
SOUTHAMPTON ESTATES
UNIT NO. 2**

POR. SOUTH 1/2 SEC. 21 & NE 1/4 SEC. 28
T19N - R19E
ANNEX. T.M. 3655 ORD. 4950



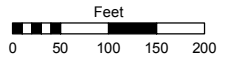
**(#1745)
SOUTHAMPTON ESTATES
UNIT NO. 1**

Assessor's Map Number

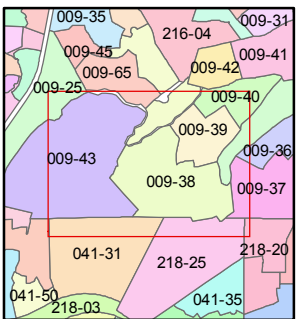
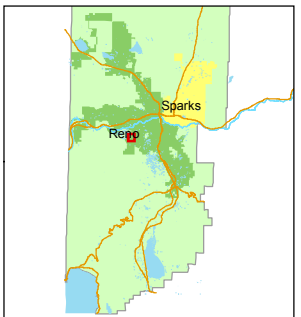
009-38

STATE OF NEVADA
WASHOE COUNTY
ASSESSOR'S OFFICE
Joshua G. Wilson, Assessor

1001 East Ninth Street
Building D
Reno, Nevada 89512
(775) 328-2231



1 inch = 200 feet



created by: TWT 11/15/2012

last updated: _____

area previously shown on map(s) _____

NOTE: This map was prepared for the use of the Washoe County Assessor for assessment and illustrative purposes only. It does not represent a survey of the premises. No liability is assumed as to the sufficiency or accuracy of the data delineated hereon.